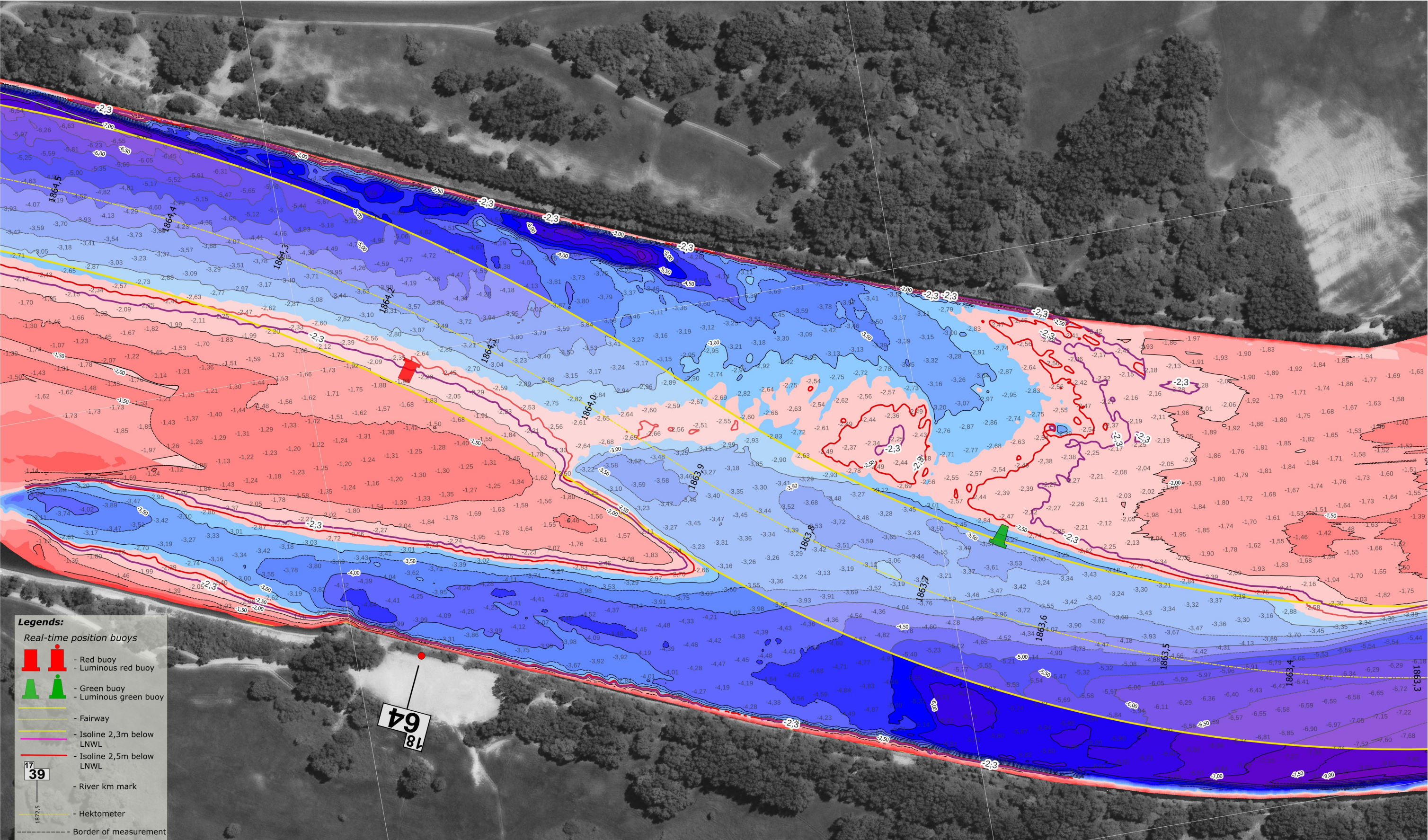


5331500

5331000

659500

659000



Legends:

- Real-time position buoys
 - Red buoy
 - Luminous red buoy
 - Green buoy
 - Luminous green buoy
- Fairway
- Isoline 2,3m below LNWL
- Isoline 2,5m below LNWL
- River km mark
- Hektometer
- Border of measurement

© Ortofotomozaika SR; „GKÚ Bratislava, NLC“, ESRI, Erosense, Geodis, GeoEye, USGS

© Bathymetry plan: Hydromorphology department, Radovan Terek

5331500

659000 5331000



SLOVENSKÝ
VODOHOSPODÁRSKY
PODNIK, štátny podnik
Povodie Dunaja, odštepny závod

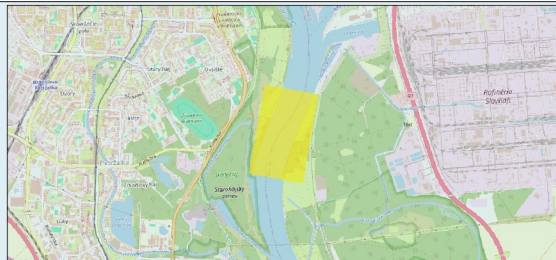
Martinská 49, 821 05 Bratislava
tel.č.: 02/60 292 495
email: Hydromorfologia_BA@svp.sk

Critical sections of the Danube River

Víče Hrdlo

date of measurement :	17.03.2026	gauge value :	Bratislava 304 cm	elevation system/ reduced level:	LNWL-DK96
date of processing :	13.04.2026	discharge :	Devín Q=1213m ³	coordinate system:	UTM 33N

sheet: DIN-A3
rkm: 1864.3 - 1863.8
page: 5/23



100 0 100 200 m

MultiBeam 1:3 000

depth below: LNWL-DK96 DEM