

781500

5303500

782000

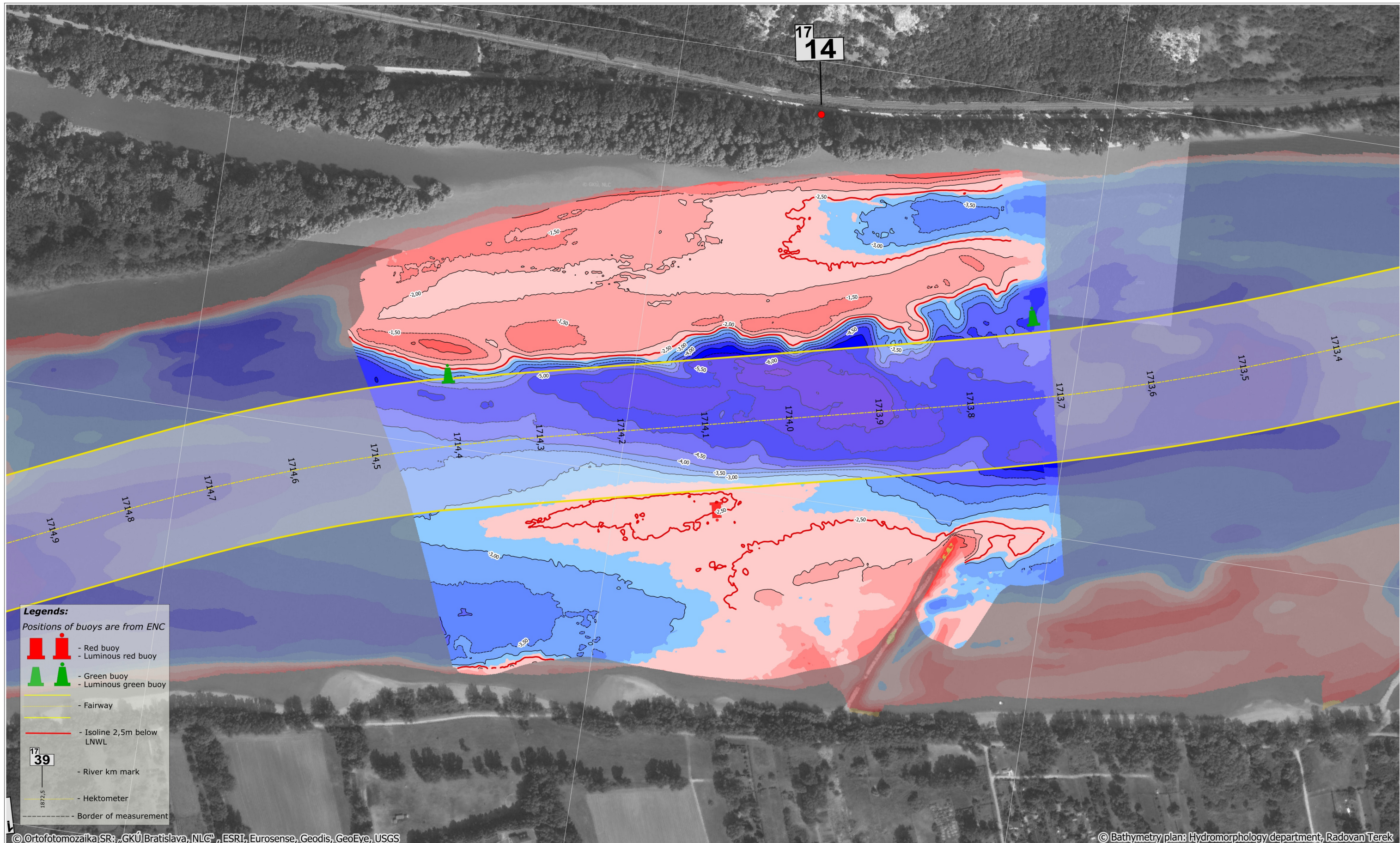
782500

5303000

5303500

5303000

5302500



**Legends:**  
Positions of buoys are from ENC

- Red buoy
- Luminous red buoy
- Green buoy
- Luminous green buoy
- Fairway
- Isoline 2,5m below LNWL
- River km mark
- Hektometer
- Border of measurement

© Ortofotomozaika SR; „GKÚ Bratislava, NLC“, ESRI, Eurosense, Geodis, GeoEye, USGS

© Bathymetry plan: Hydromorphology department, Radovan Terek

781500 5302500

782000

782500



SLOVENSKÝ  
VODOHOSPODÁRSKY  
PODNIK, štátny podnik  
Povodie Dunaja, odštepny závod

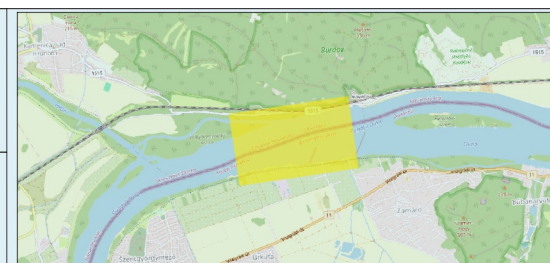
Martinská 49, 821 05 Bratislava  
tel.č.: 02/60 292 494  
email: Hydromorfologia\_BA@svp.sk

## Critical sections of the Danube River

### Hron sútok

date of measurement :	03.12.2024	gauge value :	Štúrovo 115 cm	elevation system/ reduced level:	LNWL2022
date of processing :	16.12.2024	discharge :	Štúrovo Q=1595m <sup>3</sup>	coordinate system:	UTM 33N

sheet: DIN-A3  
rkm: 1714.4 - 1713.9  
priority: 4  
page: 22/23



100 0 100 200 300 m

1:4 000

MultiBeam

depth below: LNWL2022

DEM

A color scale legend for depth below LNWL2022, ranging from -50.0 (dark purple) to 5.0 (dark brown).

A compass rose indicating North (N), South (S), East (E), and West (W).