

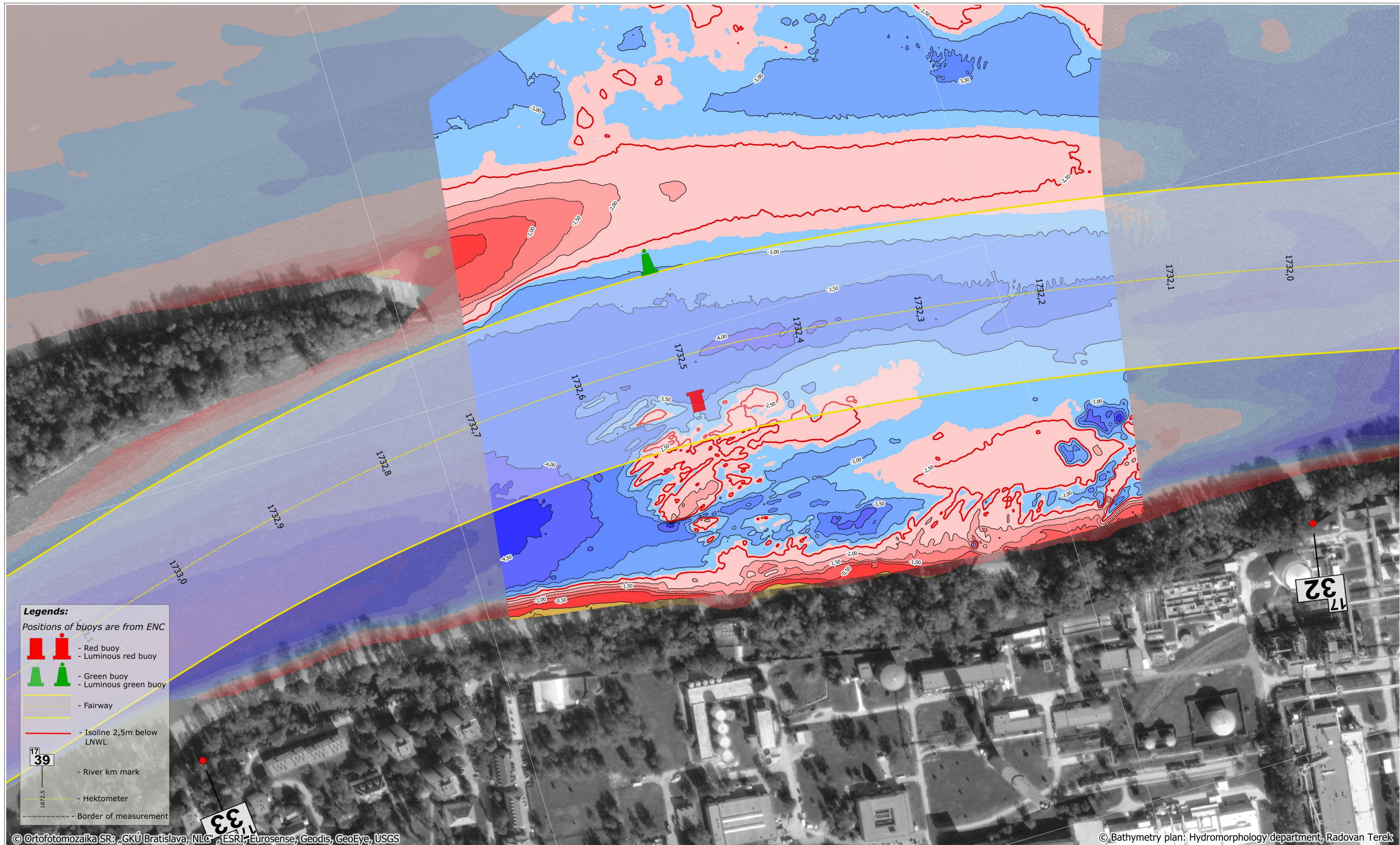
767000

767500

5296500

5296500

5296000



**Legends:**  
Positions of buoys are from ENC

- Red buoy
- Luminous red buoy
- Green buoy
- Luminous green buoy
- Fairway
- Isoline 2,5m below LNWL
- River km mark
- Hektometer
- Border of measurement

© Ortofotomozaika SR; „GKÚ Bratislava, NLC“, ESRI, Eurosense, Geodis, GeoEye, USGS

© Bathymetry plan: Hydromorphology department, Radovan Terek

767000

5296000

767500



SLOVENSKÝ  
VODOHOSPODÁRSKY  
PODNIK, štátny podnik  
Povodie Dunaja, odštepny závod

Martinská 49, 821 05 Bratislava  
tel.č.: 02/60 292 494  
email: Hydromorfologia\_BA@svp.sk

## Critical sections of the Danube River

### Mužla

date of measurement :	01.10.2024	gauge value :	Štúrovo 319 cm	elevation system/ reduced level:	LNWL2022
date of processing :	28.10.2024	discharge :	Štúrovo Q=3301m <sup>3</sup>	coordinate system:	UTM 33N

sheet: DIN-A3  
rkm: 1732.6 - 1732.2  
priority: 2  
page: 20/23

