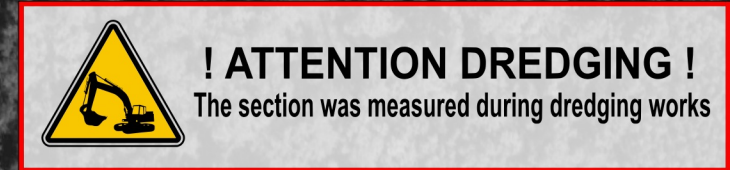
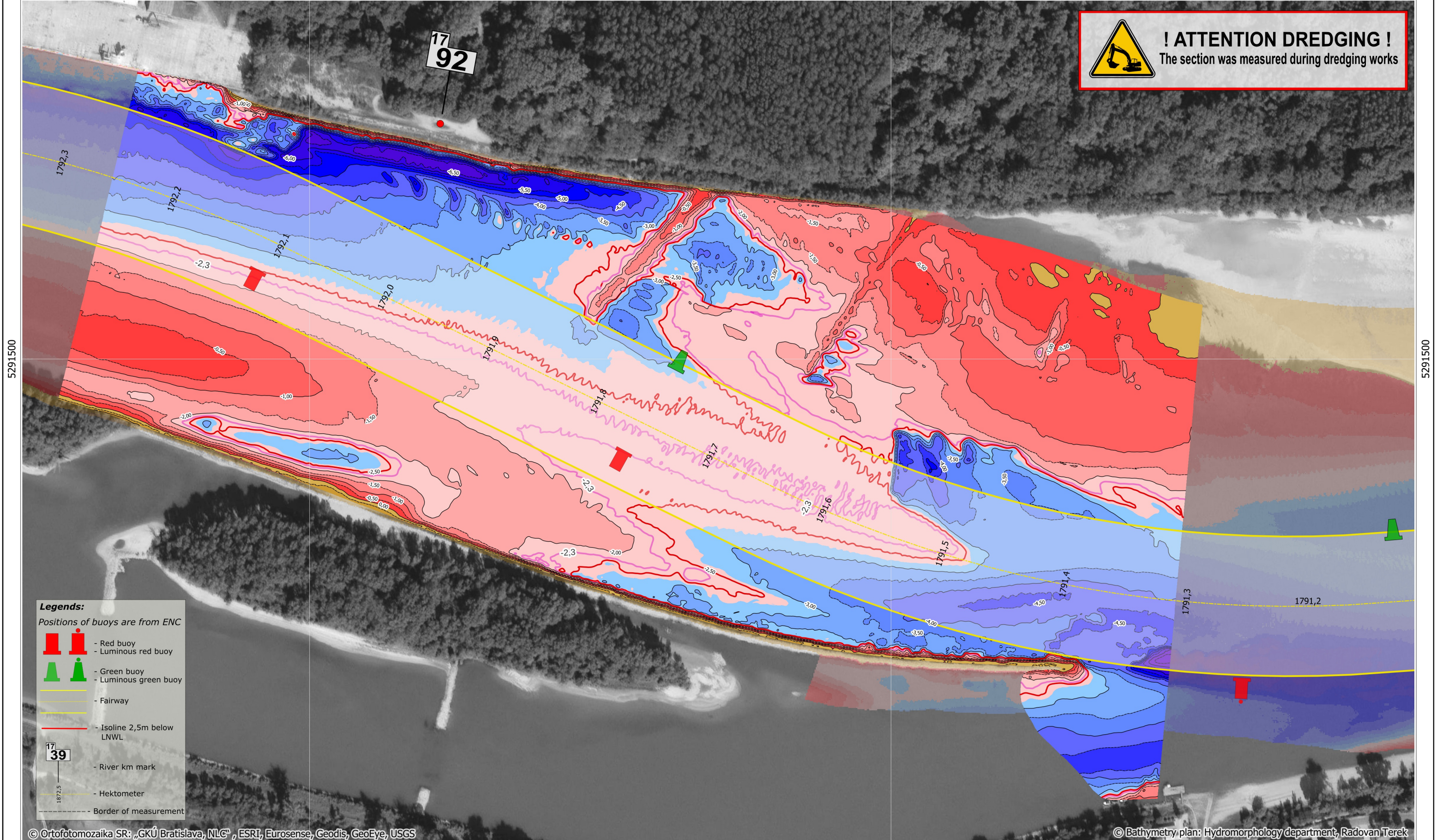


711000

711500



! ATTENTION DREDGING !
The section was measured during dredging works





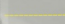

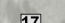
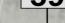



5291500

5291500

Legends:

Positions of buoys are from ENC


-  - Red buoy
-  - Luminous red buoy
-  - Green buoy
-  - Luminous green buoy
-  - Fairway
-  - Isoline 2,5m below LNWL
-  - River km mark
-  - Hektometer
-  - Border of measurement

© Ortofotomozaika SR: „GKÚ Bratislava, NLC“, ESRI, Erosense, Geodis, GeoEye, USGS

© Bathymetry plan: Hydromorphology department, Radovan Terek

711000

711500



SLOVENSKÝ
VODOHOSPODÁRSKY
PODNIK, štátny podnik
Povodie Dunaja, odštepny závod

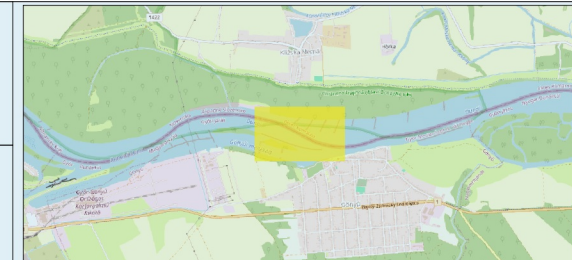
Martinská 49, 821 05 Bratislava
tel.č.: 02/60 292 494
email: Hydromorfologia_BA@svp.sk

Critical sections of the Danube River

Klížská Nemá 1

sheet: DIN-A3
rkm: 1792.1 - 1791.6
priority: 1
page: 11/23

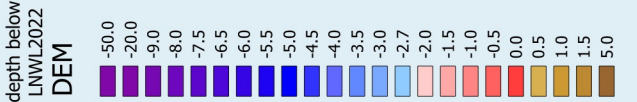
date of measurement : 28.11.2024	gauge value : Gönyű 56 cm	elevation system/ reduced level: LNWL2022
date of processing : 29.11.2024	discharge : Medveďov Q=1237m ³	coordinate system: UTM 33N



100 0 100 200 m

1:3 000

MultiBeam



depth below:
LNWL2022
DEM

50.0
20.0
9.0
8.0
7.5
6.5
6.0
5.5
5.0
4.5
4.0
3.5
3.0
2.7
2.0
1.5
1.0
0.5
0.0
0.5
1.0
1.5
5.0

