

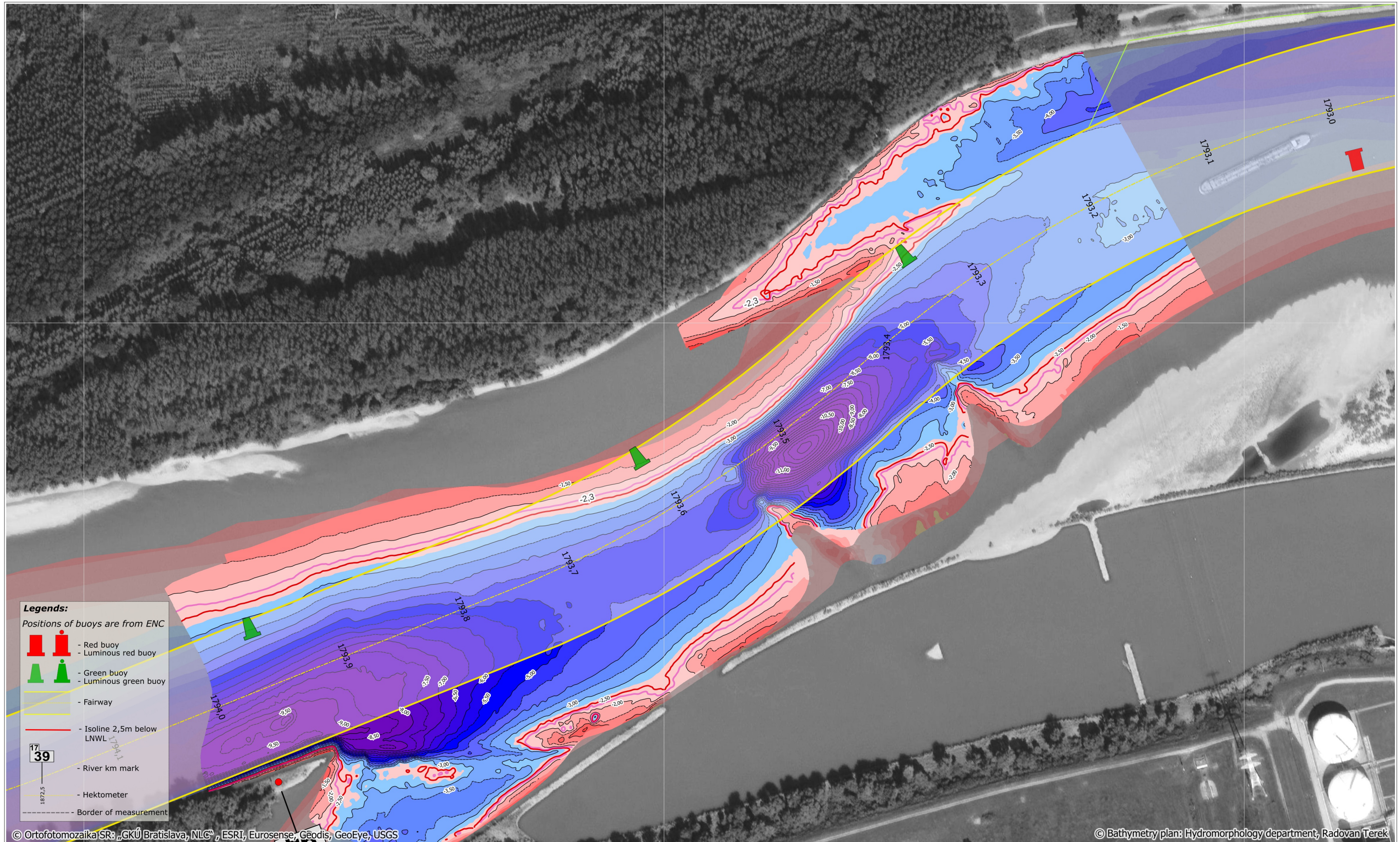
709000

709500

710000

5291500

5291500



Legends:
Positions of buoys are from ENC

- Red buoy
- Luminous red buoy
- Green buoy
- Luminous green buoy
- Fairway
- Isoline 2,5m below LNWL
- River km mark
- Hektometer
- Border of measurement

© Ortofotomozaika SR; „GKÚ Bratislava, NLG“, ESRI, Eurosense, Geodis, GeoEye, USGS

© Bathymetry plan: Hydromorphology department, Radovan Terek

709000

709500

710000



SLOVENSKÝ
VODOHOSPODÁRSKY
PODNIK, štátny podnik
Povodie Dunaja, odštepny závod

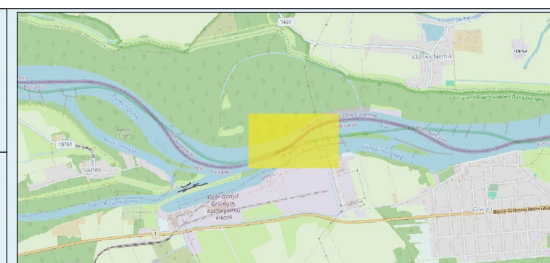
Martinská 49, 821 05 Bratislava
tel.č.: 02/60 292 494
email: Hydromorfologia_BA@svp.sk

Critical sections of the Danube River

Klížská Nemá 2

date of measurement :	09.04.2025	gauge value :	Gönyű 62 cm	elevation system/ reduced level:	LNWL2022
date of processing :	10.04.2025	discharge :	Medved'ov Q=1120m ³	coordinate system:	UTM 33N

sheet:
DIN-A3
rkm:
1793.9 - 1793.3
priority: 2
page:
10/23



100 0 100 200 m

1:3 000

MultiBeam

depth below:
LNWL2022

DEM

W N E S