

Legends:
 Positions of buoys are from ENC

- Red buoy
- Luminous red buoy
- Green buoy
- Luminous green buoy
- Fairway
- Isoline 2,5m below LNWL
- River km mark
- Hektometer
- Border of measurement

© Ortofotomozaika SR: „GKÚ Bratislava, NLC“, ESRI, Eurosense, Geodis, GeoEye, USGS

© Bathymetry plan: Hydromorphology department, Radovan Terek

SLOVENSKÝ
 VODOHOSPODÁRSKY
 PODNIK, štátny podnik
 Povodie Dunaja, odštepny závod

Martinská 49, 821 05 Bratislava
 tel.č.: 02/60 292 494
 email: Hydromorfologia_BA@svp.sk

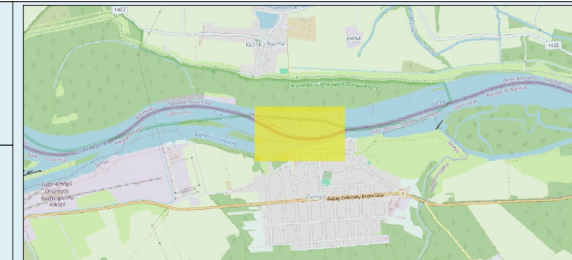
Critical sections of the Danube River

Gönyű

priority: 2

date of measurement :	09.04.2024	gauge value :	Gönyű 160 cm
date of processing :	15.04.2024	discharge :	Medved'ov Q=1863m ³
		elevation system/ reduced level:	LNWL2022
		coordinate system:	UTM 33N

sheet: DIN-A3
 rkm: 1791.4 - 1791.1
 page: 12/23



1:3 000

MultiBeam

depth below: LNWL2022

DEM

-50.0 -20.0 -9.0 -8.0 -7.5 -6.5 -6.0 -5.5 -5.0 -4.5 -4.0 -3.5 -3.0 -2.7 -2.0 -1.5 -1.0 -0.5 0.0 0.5 1.0 1.5 5.0