

ATLAS STÁTÍ ATLAS OF BERTH

DUNAJ DANUBE

rkm 1880,2 – 1708,2
(Devín – Chľaba)



AUGUST 2019

Table of Content

backwater	km from	km to	name	length	width	river bank	location	construction	condition
Danube	1879.6	1879.8	Osobne pristavisko Devin	200		L	ARS	PO	0
Danube	1869.14	1870.26	Bratislava Port - Osobne pristavisko OPBA 1-11	1120		L	ARS	PO	OTH
Danube	1868.2	1868.9	Bratislava Port - Osobne pristavisko OPBA 25-31	700	24 m	R	ARS	PO	OTH
Danube	1867.65	1869.05	Bratislava Port - Osobne pristavisko OPBA 12-22	1400	three ship breadths, max 38m	L	ARS	PO	0
Danube	1867.4	1867.62	Bratislava Port - Osobne pristavisko OPBA 23-24	220	24m	L	ARS	PO	OTH
Danube	1866.98	1867.29	Bratislava Port - Vstupna a vystupna kontrola HTD 9-10	310	three ship breadths, max 38m	L	ARS	PO	OTH
Danube	1866.5	1866.98	Bratislava Port - Obsluzne polohy HTD 11-18	480	two ship breadths, max 24m	L	ARS	PO	0
Danube	1866.4	1866.5	Bratislava Port - Manipulacna poloha HTD 19	100	one ship breadth	L	ARS	PO	0
Danube	1866.25	1866.4	Bratislava Port - Odstavna poloha HTD 19 (TRANZIT)	150	24 m	L	OTH	PO	0
Danube	1865.7	1866	Bratislava Port - prekladisko mineralnych olejov HTD 51-53	300	one ship breadth	L	OTH	PO	OTH
Danube	1865.4	1865.7	Bratislava Port - prekladisko mineralnych olejov HTD 54-55	300	one ship breadth	L	OTH	PO	1
Danube	1864.3	1864.6	Bratislava Port - Odstavna poloha HTD 121L-123L	300	12m	L	OTH	NA	0

Danube	1864.2	1864.3	Bratislava Port - Odstavna poloha 124L	100	12m	L	OTH	NA	1
Danube	1863.7	1864.1	Bratislava Port - Odstavna poloha HTD 128L-131L	400	24m	R	OTH	NA	0
Danube	1769.2	1770	Komarno Port - Odstavne polohy HTD 1-8	800	three ship breadths	L	ARS	NA	0
Danube	1768.1	1769.2	Komarno Port - Odstavne polohy HTD 9-19	1100	four ship breadths	L	ARS	NA	0
Danube	1767.47	1768.1	Komarno Port - polohy OPKN 21-24	630	24m	L	ARS	NA	OTH
Danube	1767.36	1767.47	Komarno Port - kontrola SOD - poloha HTD 25	110	three ship breadths, 38m	L	OTH	PO	OTH
Danube	1767.2	1767.36	Komarno Port - kontrola SOD - poloha HTD 26	160	50 m	L	OTH	E	OTH
Danube	1766.74	1767	Komarno Port - Manipulacne polohy HTD 30-33	260	one ship breadth	L	OTH	E	0
Danube	1766.65	1766.74	Komarno Port - Manipulacna poloha HTD 34	90	three ship breadths, 38m	L	OTH	E	0
Danube	1766.5	1766.6	Komarno Port - Odstavna poloha HTD 35	100	three ship breadths, 38m	L	OTH	E	1
Danube	1766	1766.5	Komarno Port - Manipulacne polohy HTD 36-39	500	three ship breadths, 38m	L	OTH	E	1
Danube	1718.76	1718.79	Sturovo Port - pristavisko pre male plavidla OPST 1	30	10m	L	ARS	PO	OTH
Danube	1718.73	1718.75	Sturovo Port - pristavisko pre colnu spravu OPST 2	20	10m	L	ARS	PO	OTH
Danube	1718.45	1718.68	Sturovo Port - pristavisko osobnych lodí OPST 3-4	230	three ship bread	L	ARS	PO	0

					ths, max.3 8m				
Danube	1718.37	1718.44	Sturovo Port - pristavisko osobnych lodi OPST 5	70	two ship bread ths, 24m	L	ARS	PO	0
Danube	1718.3	1718.36	Sturovo Port - pristavisko osobnych lodi OPST 6	60	two ship bread ths, 24m	L	ARS	PO	0
Danube Canal Gabcikovo	9.1	9.2	Gabcikovo - Horna rejda pravej plavebnej komory	100		R	UL	QW	0
Danube Canal Gabcikovo	9.1	9.2	Gabcikovo - Horna rejda lavej plavebnej komory	100		L	UL	QW	0
Danube Canal Gabcikovo	7.9	8	Gabcikovo - Dolna rejda lavej plavebnej komory	100		L	DL	QW	0
Danube Canal Gabcikovo	7.9	8	Gabcikovo - Dolna rejda pravej plavebnej komory	100		R	DL	QW	0
Danube Canal Gabcikovo	7.6	7.7	Pristavisko SVP Gabcikovo - pravy breh	100		R	DL	PO	O T H
Danube Canal Gabcikovo	7.1	7.2	Pristavisko SVP Gabcikovo - lavy breh	100		L	DL	PO	O T H

Osobne pristavisko Devin

Danube km: 1879,6 - 1879,8

GPS coordinates:

North: 48° 10' 15.6"

East: 16° 58' 50"

berths information

length: 200 m

river bank

- ☒ L left river bank
☐ R right river bank
☐ T at the dam

location

- ☐ DPP "downstream" side of a power plant
☐ DL "downstream" side of a lock (lock entrance area)
☐ UL "upstream" side of a lock (lock entrance area)
☐ UPP "upstream" side of a power plant
☒ ARS along the river stretch
☐ OTHothers (before a harbour entrance in an old river branch)

local berths conditions

- ☒ 0 berthing permitted (i.e. anchoring or making fast to the bank)
☐ 1 berthing area reserved for pushing-navigation vessels that are required to carry one blue cone
☐ 2 berthing area reserved for pushing-navigation vessels that are required to carry two blue cones
☐ 3 berthing area reserved for pushing-navigation vessels that are required to carry three blue cones
☐ OTHother restrictions (only for small motor crafts, only for border control, only for damaged vessels after an accident, max. time allowed for berthing, ...)

facilities

stairs to go ashore

- ☐ yes ☒ no

possibility to load and unload cars from a vessel

- ☐ yes ☒ no

lightning

- ☐ yes ☒ no

river bank construction

- ☐ sheet pile wall
☐ embankment (slope)
☐ quay walls
☐ dam
☐ dolphins
☒ pontoon
☐ natural (wild)

specimen widths

- ☐ 1 beam
☐ 2 beams
☐ 3 beams

connections

ports/harbours in the surrounding area

- ☒ 5 - 10 km Bratislava Port

villages, cities in the surrounding area

- ☒ < 5 km Bratislava-Devin

access road

- ☒ yes ☐ no

maintenance and disposal facilities

electricity supply

- ☐ yes ☒ no

fresh water supply

- ☐ yes ☒ no

waste disposal

- ☐ yes ☒ no

petrol station

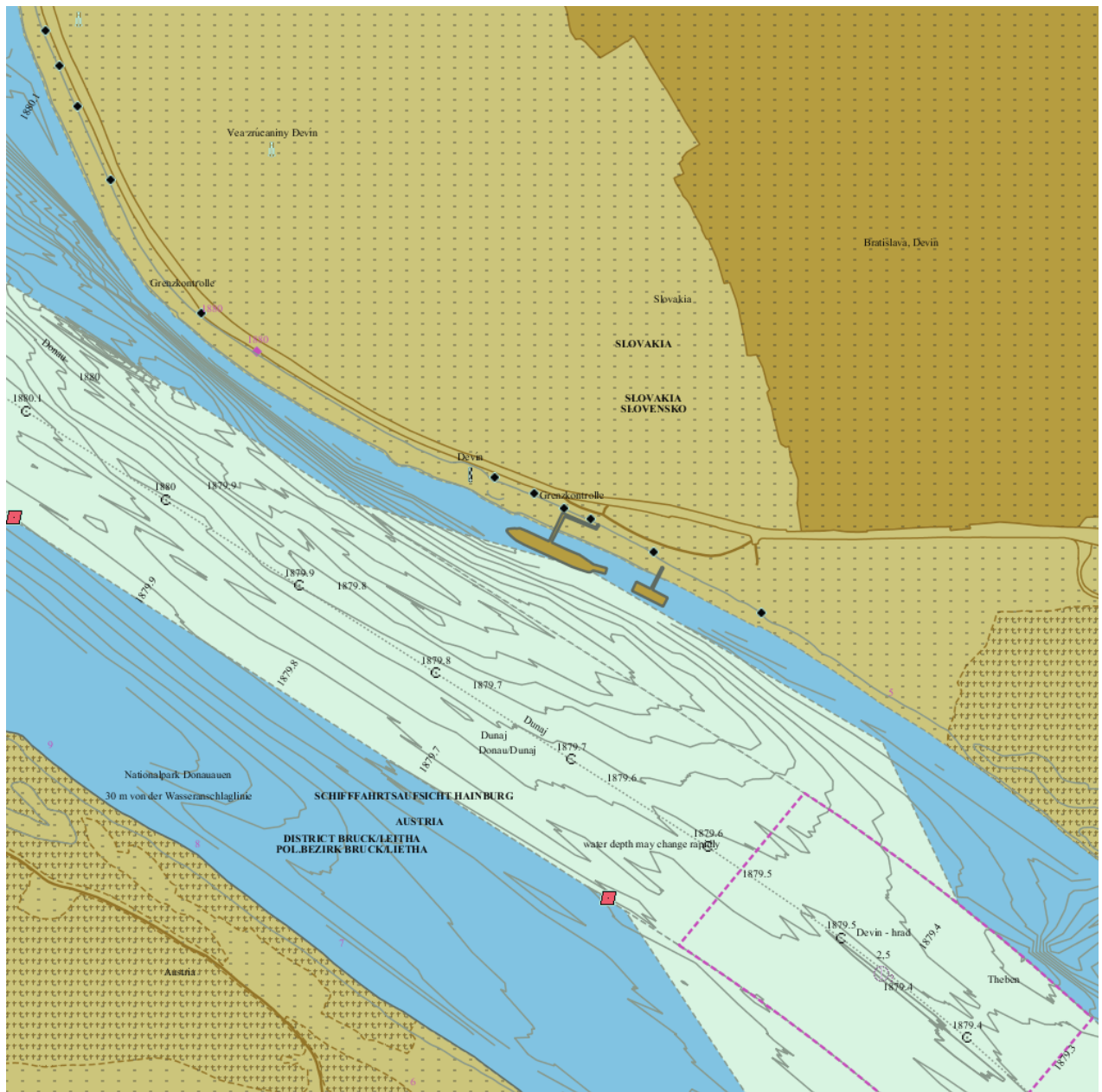
- ☐ yes ☒ no

safety in case of flood or storm

- ☐ yes ☒ no

Parking fees/costs

- ☐ yes ☒ no



Bratislava Port - Osobne pristavisko OPBA 1-11

Danube km: 1869.14 - 1870.26

GPS coordinates:

North: 48° 8' 24"

East: 17° 5' 38"

berths information

length: 1120 m

river bank

- ☒ L left river bank
☐ R right river bank
☐ T at the dam

location

- ☐ DPP "downstream" side of a power plant
☐ DL "downstream" side of a lock (lock entrance area)
☐ UL "upstream" side of a lock (lock entrance area)
☐ UPP "upstream" side of a power plant
☒ ARS along the river stretch
☐ OTHothers (before a harbour entrance in an old river branch)

local berths conditions

- ☐ 0 berthing permitted (i.e. anchoring or making fast to the bank)
☐ 1 berthing area reserved for pushing-navigation vessels that are required to carry one blue cone
☐ 2 berthing area reserved for pushing-navigation vessels that are required to carry two blue cones
☐ 3 berthing area reserved for pushing-navigation vessels that are required to carry three blue cones
☒ OTHother restrictions (only for small motor crafts, only for border control, only for damaged vessels after an accident, max. time allowed for berthing, ...)

facilities

stairs to go ashore

- ☐ yes ☒ no

possibility to load and unload cars from a vessel

- ☐ yes ☒ no

lightning

- ☐ yes ☒ no

river bank construction

- ☐ sheet pile wall
☐ embankment (slope)
☐ quay walls
☐ dam
☐ dolphins
☒ pontoon
☐ natural (wild)

specimen widths

- ☐ 1 beam
☐ 2 beams
☐ 3 beams

connections

ports/harbours in the surrounding area

- ☒ 5 - 10 km Bratislava port, downstream

villages, cities in the surrounding area

- ☒ < 5 km Bratislava

access road

- ☒ yes ☐ no

maintenance and disposal facilities

electricity supply

- ☐ yes ☒ no

fresh water supply

- ☐ yes ☒ no

waste disposal

- ☐ yes ☒ no

petrol station

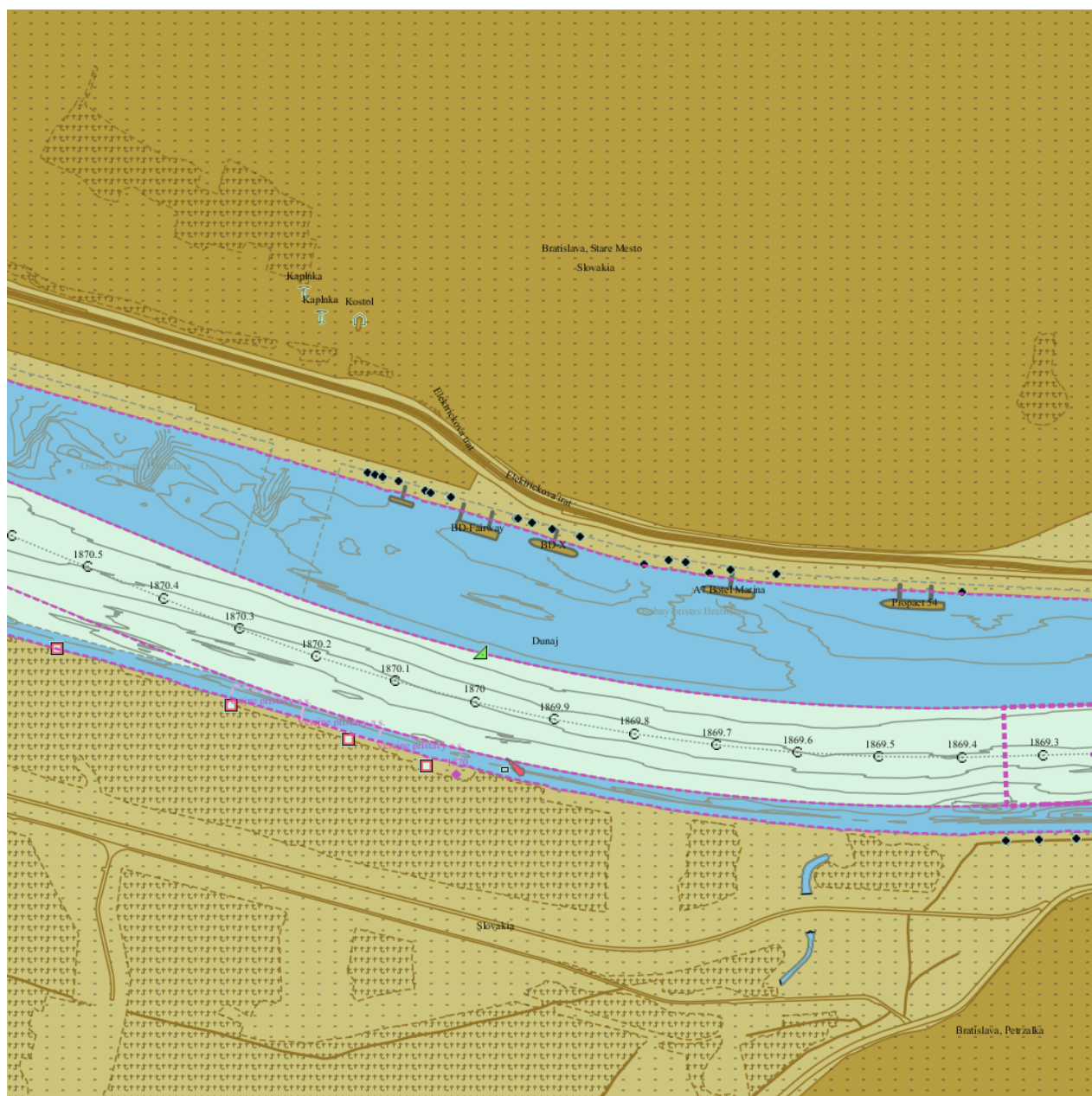
- ☐ yes ☒ no

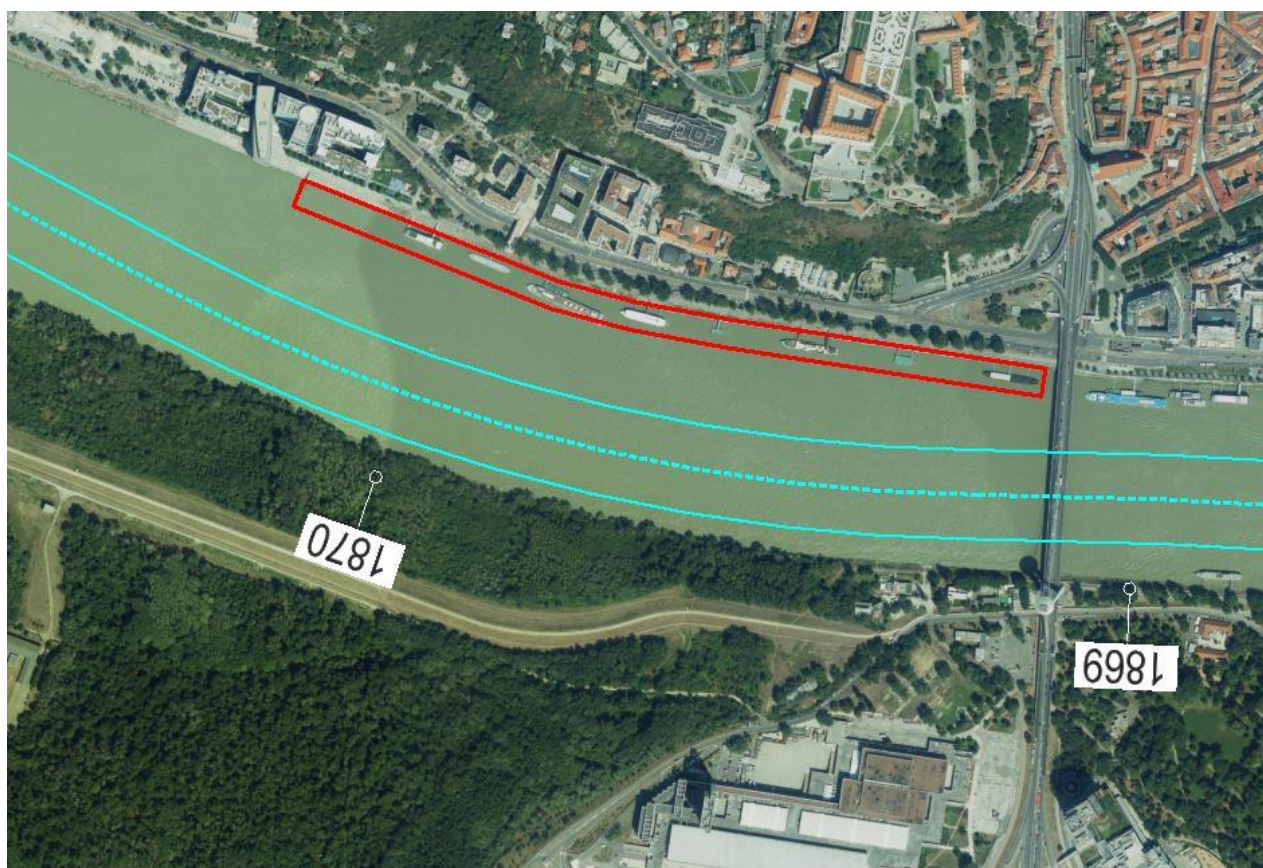
safety in case of flood or storm

- ☐ yes ☒ no

Parking fees/costs

- ☐ yes ☒ no





Bratislava Port - Osobne pristavisko OPBA 25-31

Danube km: 1868.2 - 1868.9

GPS coordinates:

North: 48° 8' 13"

East: 17° 6' 35"

berths information

length: 700 m

river bank

- ☐ L left river bank
☒ R right river bank
☐ T at the dam

location

- ☐ DPP "downstream" side of a power plant
☐ DL "downstream" side of a lock (lock entrance area)
☐ UL "upstream" side of a lock (lock entrance area)
☐ UPP "upstream" side of a power plant
☒ ARS along the river stretch
☐ OTHothers (before a harbour entrance in an old river branch)

local berths conditions

- ☐ 0 berthing permitted (i.e. anchoring or making fast to the bank)
☐ 1 berthing area reserved for pushing-navigation vessels that are required to carry one blue cone
☐ 2 berthing area reserved for pushing-navigation vessels that are required to carry two blue cones
☐ 3 berthing area reserved for pushing-navigation vessels that are required to carry three blue cones
☒ OTHother restrictions (only for small motor crafts, only for border control, only for damaged vessels after an accident, max. time allowed for berthing, ...)

facilities

stairs to go ashore

- ☐ yes ☒ no

possibility to load and unload cars from a vessel

- ☐ yes ☒ no

lightning

- ☐ yes ☒ no

river bank construction

- ☐ sheet pile wall
☐ embankment (slope)
☐ quay walls
☐ dam
☐ dolphins
☒ pontoon
☐ natural (wild)

specimen widths

- ☐ 1 beam
☐ 2 beams
☐ 3 beams
☒ 24 m

connections

ports/harbours in the surrounding area

- ☒ 10 - 20 km Osobne pristavisko Devin, upstream

villages, cities in the surrounding area

- ☒ < 5 km Bratislava

access road

- ☒ yes ☐ no

maintenance and disposal facilities

electricity supply

- ☐ yes ☒ no

fresh water supply

- ☐ yes ☒ no

waste disposal

- ☐ yes ☒ no

petrol station

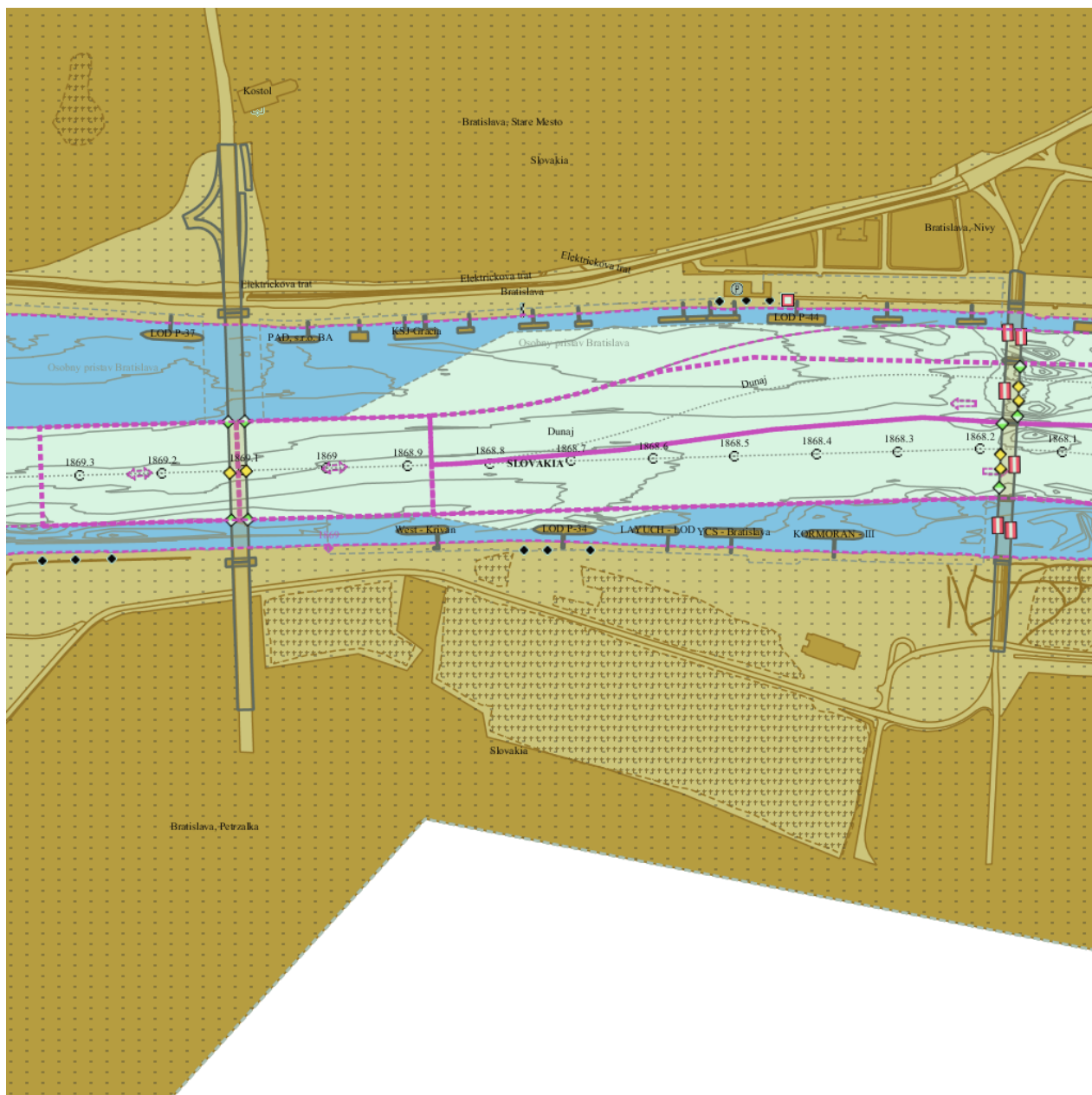
- ☐ yes ☒ no

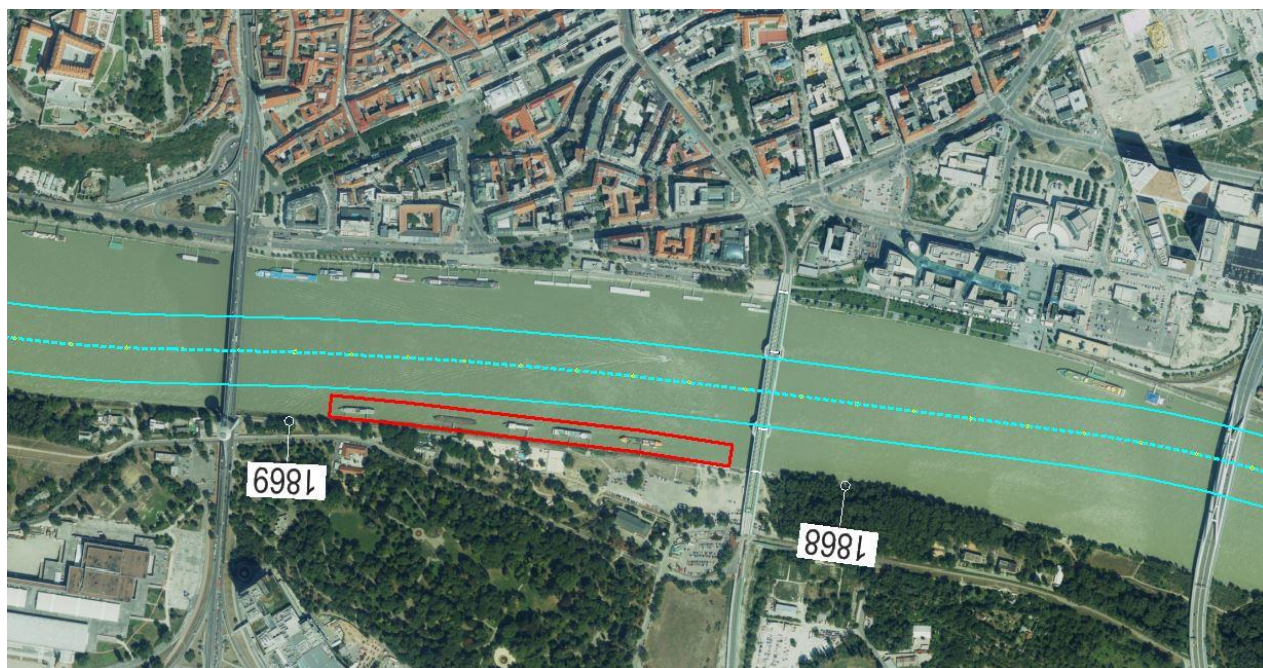
safety in case of flood or storm

- ☐ yes ☒ no

Parking fees/costs

- ☐ yes ☒ no





Bratislava Port - Osobne pristavisko OPBA 12-22

Danube km: 1867.65 - 1869.05

GPS coordinates:

North: 48° 8' 21"

East: 17° 6' 20"

berths information

length: 1400 m

river bank

- ☒ L left river bank
☐ R right river bank
☐ T at the dam

location

- ☐ DPP "downstream" side of a power plant
☐ DL "downstream" side of a lock (lock entrance area)
☐ UL "upstream" side of a lock (lock entrance area)
☐ UPP "upstream" side of a power plant
☒ ARS along the river stretch
☐ OTHothers (before a harbour entrance in an old river branch)

local berths conditions

- ☒ 0 berthing permitted (i.e. anchoring or making fast to the bank)
☐ 1 berthing area reserved for pushing-navigation vessels that are required to carry one blue cone
☐ 2 berthing area reserved for pushing-navigation vessels that are required to carry two blue cones
☐ 3 berthing area reserved for pushing-navigation vessels that are required to carry three blue cones
☐ OTHother restrictions (only for small motor crafts, only for border control, only for damaged vessels after an accident, max. time allowed for berthing, ...)

facilities

stairs to go ashore

- ☐ yes ☒ no

possibility to load and unload cars from a vessel

- ☐ yes ☒ no

lightning

- ☐ yes ☒ no

river bank construction

- ☐ sheet pile wall
☐ embankment (slope)
☐ quay walls
☐ dam
☐ dolphins
☒ pontoon
☐ natural (wild)

specimen widths

- ☐ 1 beam
☐ 2 beams
☐ 3 beams
☒ three ship breadths, max 38m

connections

ports/harbours in the surrounding area

- ☒ 10 - 20 km Osobne pristavisko Devin, upstream

villages, cities in the surrounding area

- ☒ < 5 km Bratislava

access road

- ☒ yes ☐ no

maintenance and disposal facilities

electricity supply

- ☐ yes ☒ no

fresh water supply

- ☐ yes ☒ no

waste disposal

- ☐ yes ☒ no

petrol station

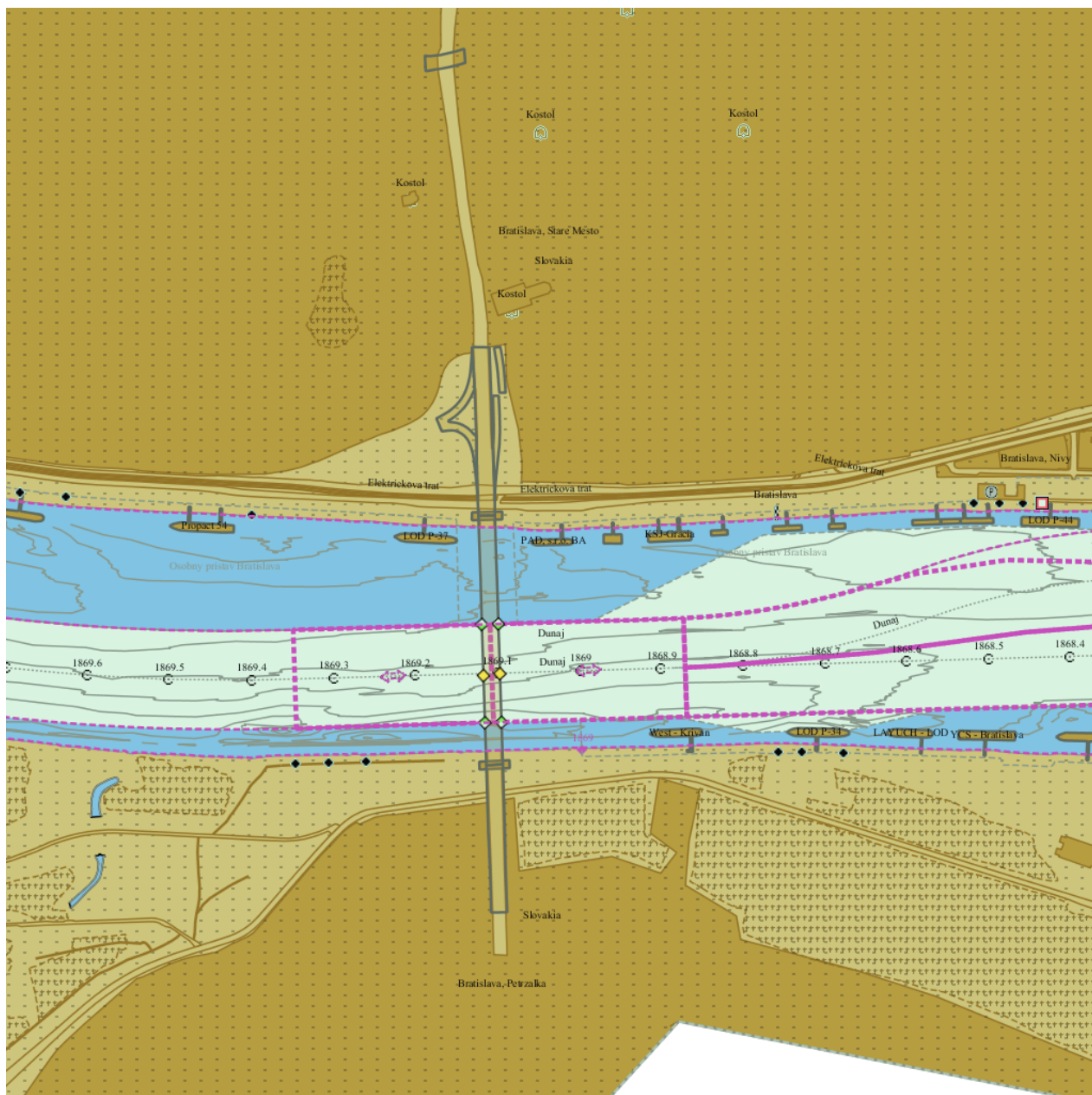
- ☐ yes ☒ no

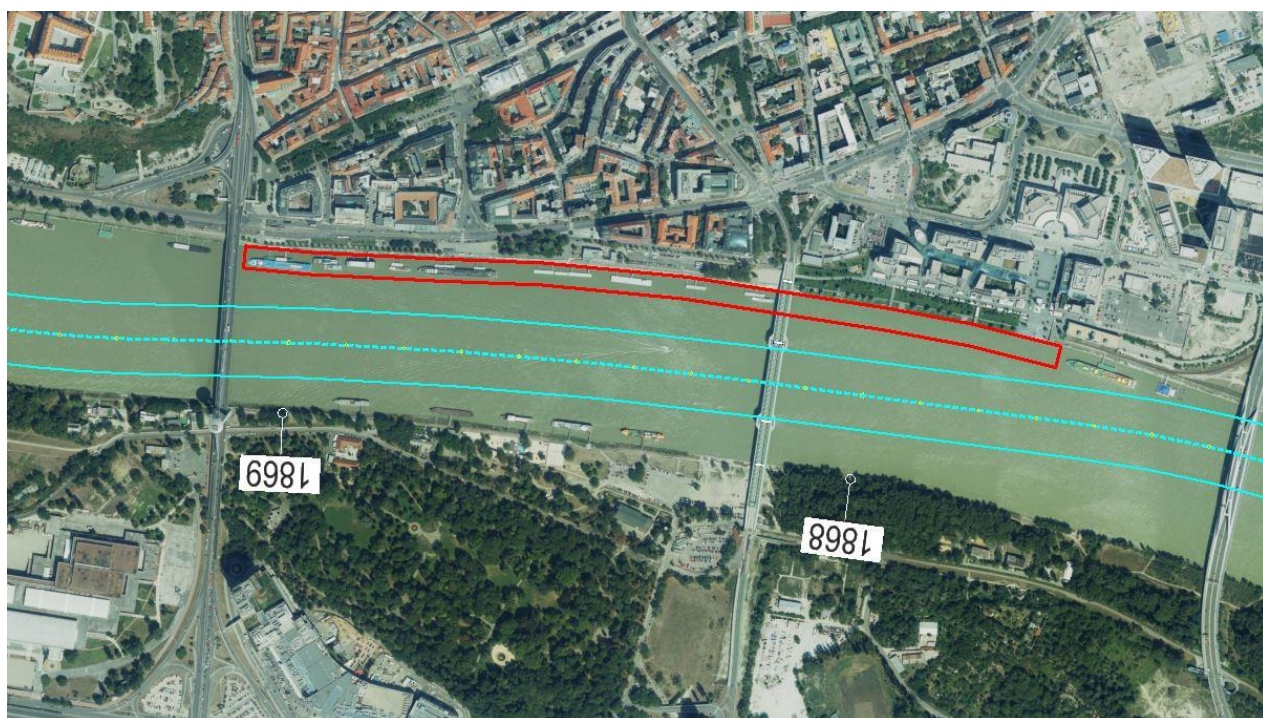
safety in case of flood or storm

- ☐ yes ☒ no

Parking fees/costs

- ☐ yes ☒ no





Bratislava Port - Osobne pristavisko OPBA 23-24

Danube km: 1867.4 - 1867.62

GPS coordinates:

North: 48° 8' 20"

East: 17° 7' 29"

berths information

length: 220 m

river bank

- ☒ L left river bank
- ☐ R right river bank
- ☐ T at the dam

location

- ☐ DPP "downstream" side of a power plant
- ☐ DL "downstream" side of a lock (lock entrance area)
- ☐ UL "upstream" side of a lock (lock entrance area)
- ☐ UPP "upstream" side of a power plant
- ☒ ARS along the river stretch
- ☐ OTHothers (before a harbour entrance in an old river branch)

local berths conditions

- ☐ 0 berthing permitted (i.e. anchoring or making fast to the bank)
- ☐ 1 berthing area reserved for pushing-navigation vessels that are required to carry one blue cone
- ☐ 2 berthing area reserved for pushing-navigation vessels that are required to carry two blue cones
- ☐ 3 berthing area reserved for pushing-navigation vessels that are required to carry three blue cones
- ☒ OTHother restrictions (only for small motor crafts, only for border control, only for damaged vessels after an accident, max. time allowed for berthing, ...)

facilities

stairs to go ashore

- ☐ yes ☒ no

possibility to load and unload cars from a vessel

- ☐ yes ☒ no

lightning

- ☐ yes ☒ no

river bank construction

- ☐ sheet pile wall
- ☐ embankment (slope)
- ☐ quay walls
- ☐ dam
- ☐ dolphins
- ☒ pontoon
- ☐ natural (wild)

specimen widths

- ☐ 1 beam
- ☐ 2 beams
- ☐ 3 beams
- ☒ 24m

connections

ports/harbours in the surrounding area

- ☒ 10 - 20 km Osobne pristavisko Devin, upstream

villages, cities in the surrounding area

- ☒ < 5 km Bratislava

access road

- ☐ yes ☒ no

maintenance and disposal facilities

electricity supply

- ☐ yes ☒ no

fresh water supply

- ☐ yes ☒ no

waste disposal

- ☐ yes ☒ no

petrol station

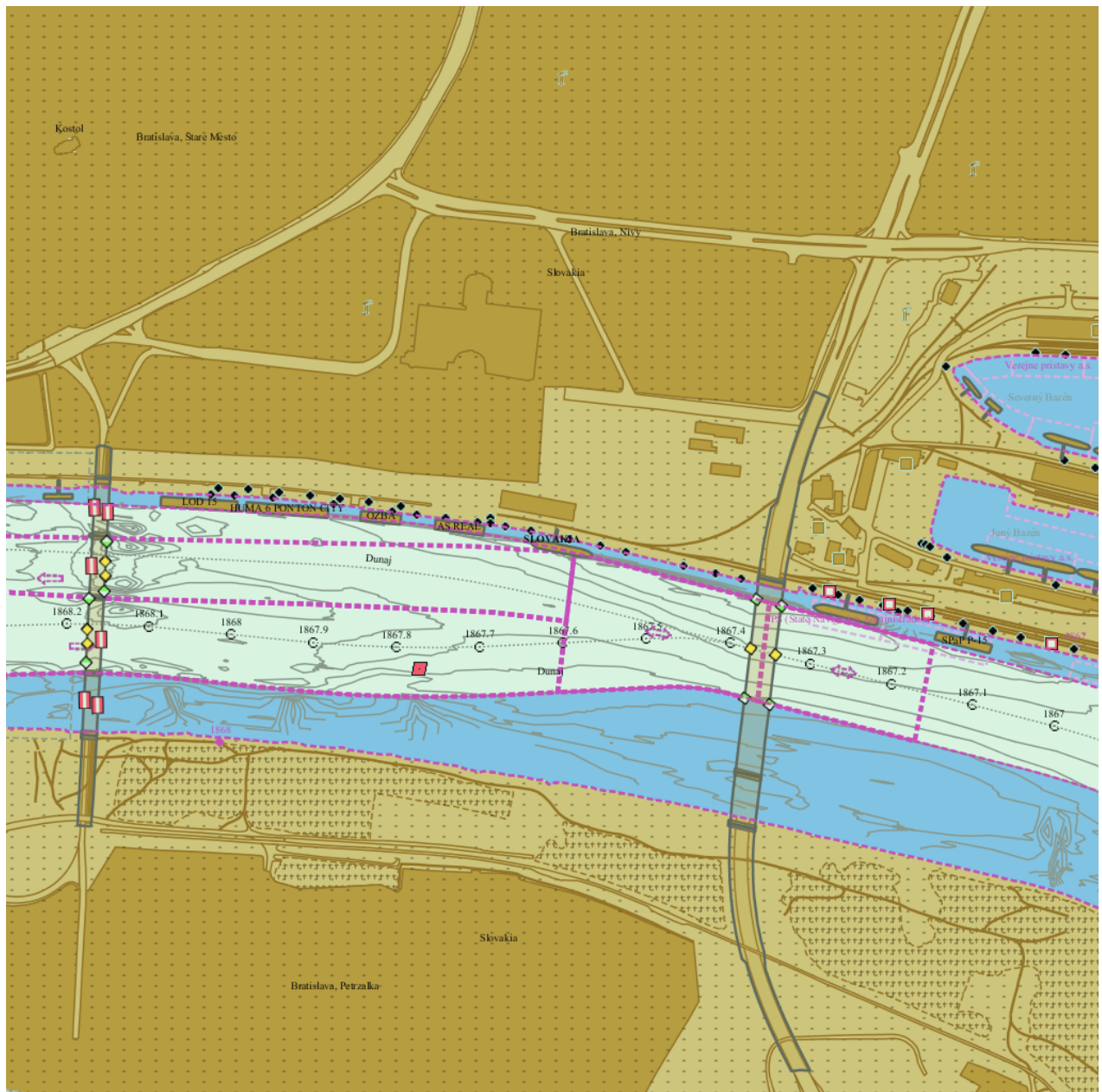
- ☐ yes ☒ no

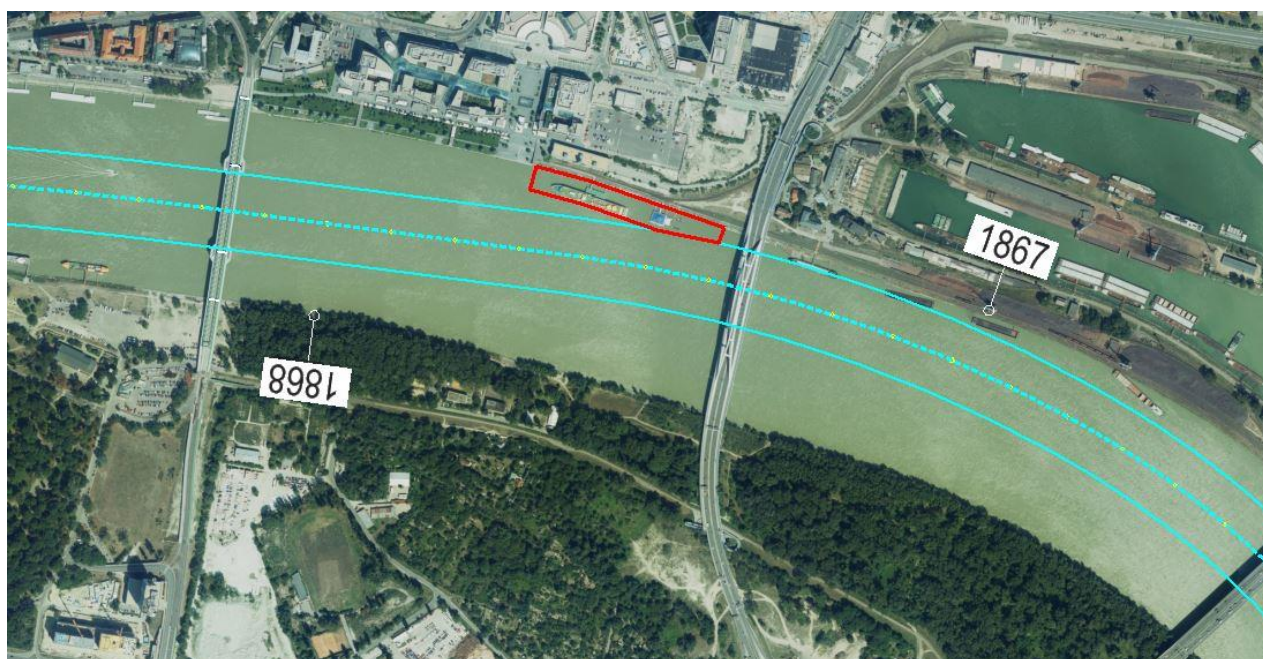
safety in case of flood or storm

- ☐ yes ☒ no

Parking fees/costs

- ☐ yes ☒ no





Bratislava Port - Vstupna a vystupna kontrola HTD 9-10

Danube km: 1866.98 - 1867.29

GPS coordinates:

North: 48° 8' 16.62"

East: 17° 7' 51.53"

berths information

length: 310 m

river bank

- ☒ L left river bank
☐ R right river bank
☐ T at the dam

location

- ☐ DPP "downstream" side of a power plant
☐ DL "downstream" side of o lock (lock entrance area)
☐ UL "upstream" side of o lock (lock entrance area)
☐ UPP "upstream" side of a power plant
☒ ARS along the river stretch
☐ OTHothers (before a harbour entrance in an old river branch)

local berths conditions

- ☐ 0 berthing permitted (i.e. anchoring or making fast to the bank)
☐ 1 berthing area reserved for pushing-navigation vessels that are required to carry one blue cone
☐ 2 berthing area reserved for pushing-navigation vessels that are required to carry two blue cones
☐ 3 berthing area reserved for pushing-navigation vessels that are required to carry three blue cones
☒ OTHother restrictions (only for small motor crafts, only for border control, only for damaged vessels after an accident, max. time allowed for berthing, ...)

facilities

stairs to go ashore

- ☐ yes ☒ no

possibility to load and unload cars from a vessel

- ☐ yes ☒ no

lightning

- ☐ yes ☒ no

river bank construction

- ☐ sheet pile wall
☐ embankment (slope)
☐ quay walls
☐ dam
☐ dolphins
☒ pontoon
☐ natural (wild)

specimen widths

- ☐ 1 beam
☐ 2 beams
☐ 3 beams
☒ three ship breadths, max 38m

connections

ports/harbours in the surrounding area

- ☒ 10 - 20 km Osobne pristavisko Devin, upstream

villages, cities in the surrounding area

- ☒ < 5 km Bratislava

access road

- ☒ yes ☐ no

maintenance and disposal facilities

electricity supply

- ☐ yes ☒ no

fresh water supply

- ☐ yes ☒ no

waste disposal

- ☐ yes ☒ no

petrol station

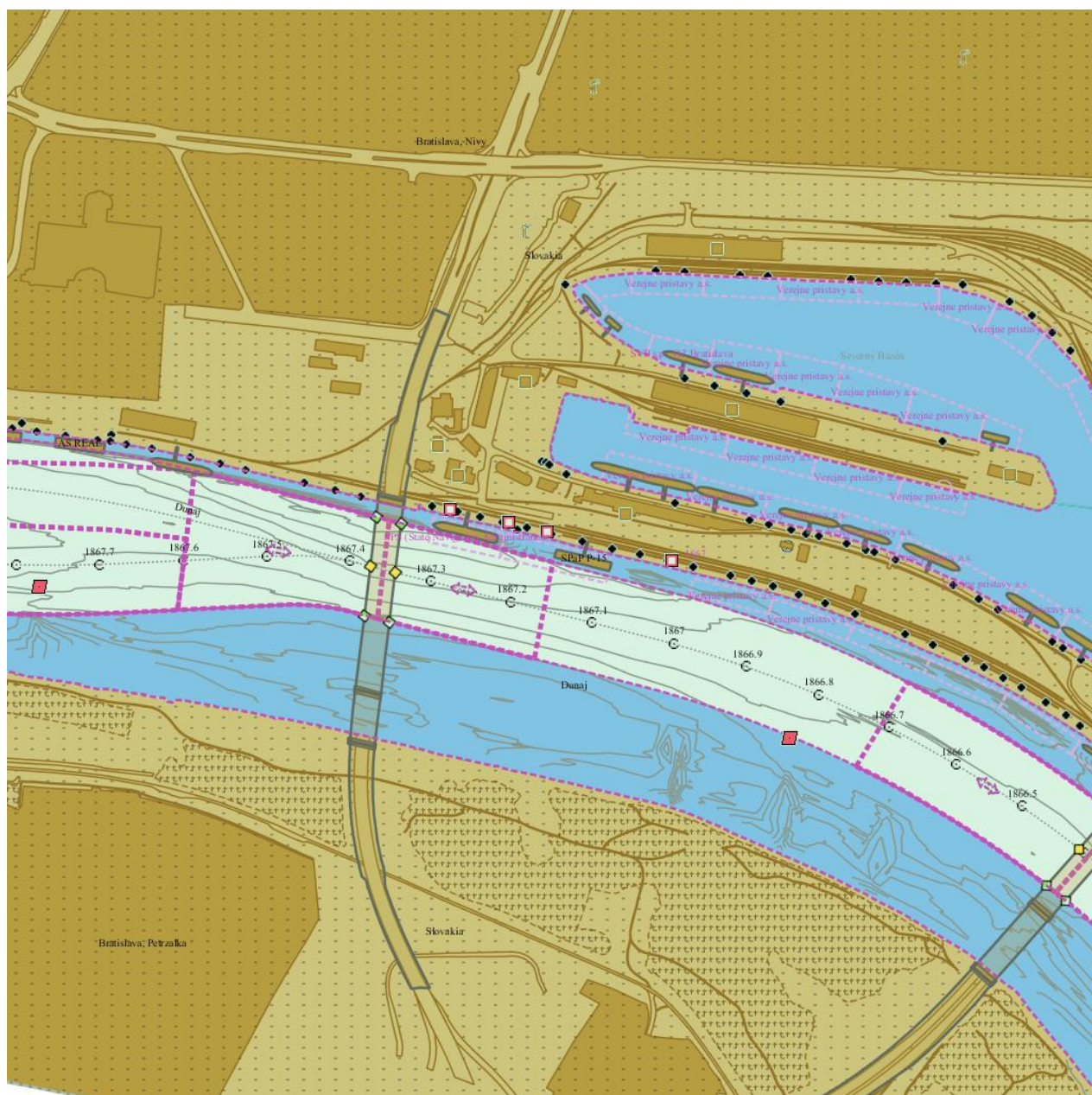
- ☐ yes ☒ no

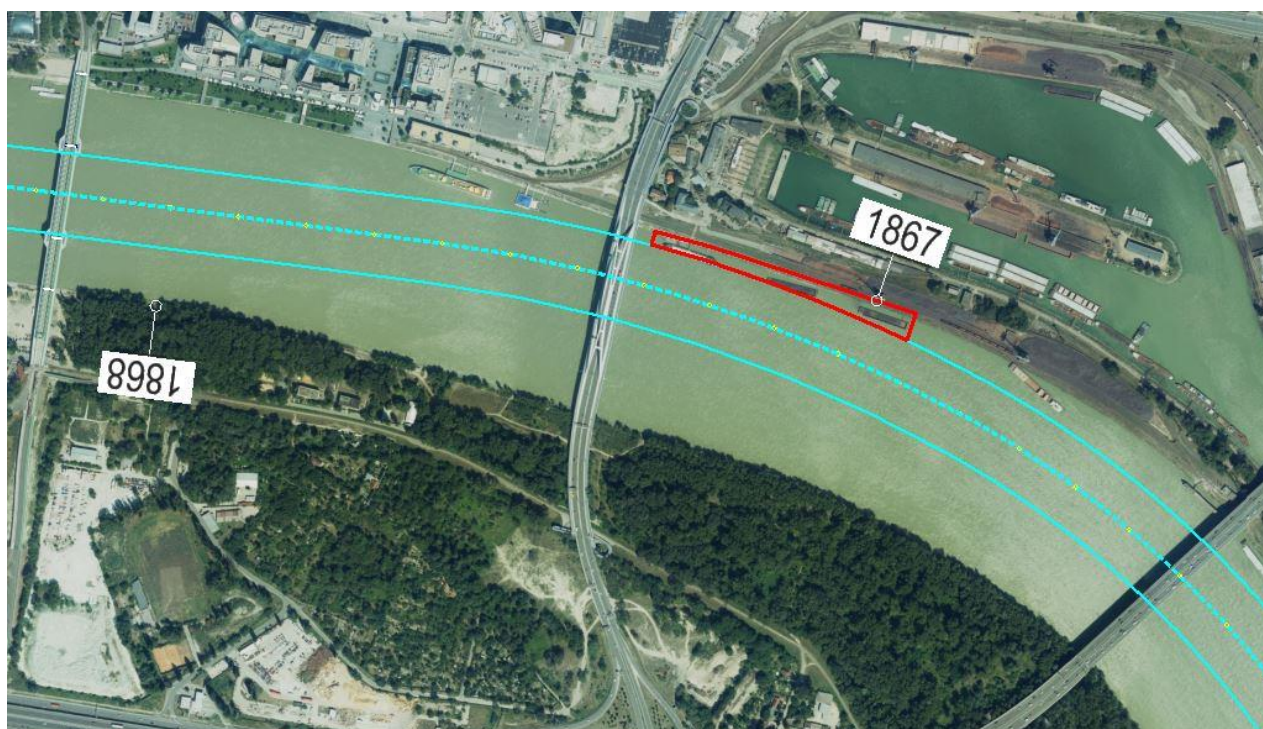
safety in case of flood or storm

- ☐ yes ☒ no

Parking fees/costs

- ☐ yes ☒ no





Bratislava Port - Obslužne polohy HTD 11-18

Danube km: 1866.5 - 1866.98

GPS coordinates:

North: 48° 8' 13.08"

East: 17° 8' 11.07"

berths information

length: 480 m

river bank

- ☒ L left river bank
- ☐ R right river bank
- ☐ T at the dam

location

- ☐ DPP "downstream" side of a power plant
- ☐ DL "downstream" side of a lock (lock entrance area)
- ☐ UL "upstream" side of a lock (lock entrance area)
- ☐ UPP "upstream" side of a power plant
- ☒ ARS along the river stretch
- ☐ OTHothers (before a harbour entrance in an old river branch)

local berths conditions

- ☒ 0 berthing permitted (i.e. anchoring or making fast to the bank)
- ☐ 1 berthing area reserved for pushing-navigation vessels that are required to carry one blue cone
- ☐ 2 berthing area reserved for pushing-navigation vessels that are required to carry two blue cones
- ☐ 3 berthing area reserved for pushing-navigation vessels that are required to carry three blue cones
- ☐ OTHother restrictions (only for small motor crafts, only for border control, only for damaged vessels after an accident, max. time allowed for berthing, ...)

facilities

stairs to go ashore

- ☐ yes ☒ no

possibility to load and unload cars from a vessel

- ☐ yes ☒ no

lightning

- ☐ yes ☒ no

river bank construction

- ☐ sheet pile wall
- ☐ embankment (slope)
- ☐ quay walls
- ☐ dam
- ☐ dolphins
- ☒ pontoon
- ☐ natural (wild)

specimen widths

- ☐ 1 beam
- ☐ 2 beams
- ☐ 3 beams
- ☒ two ship breadths, max 24m

connections

ports/harbours in the surrounding area

- ☒ 10 - 20 km Osobne pristavisko Devin, upstream

villages, cities in the surrounding area

- ☒ < 5 km Bratislava

access road

- ☐ yes ☒ no

maintenance and disposal facilities

electricity supply

- ☐ yes ☒ no

fresh water supply

- ☐ yes ☒ no

waste disposal

- ☐ yes ☒ no

petrol station

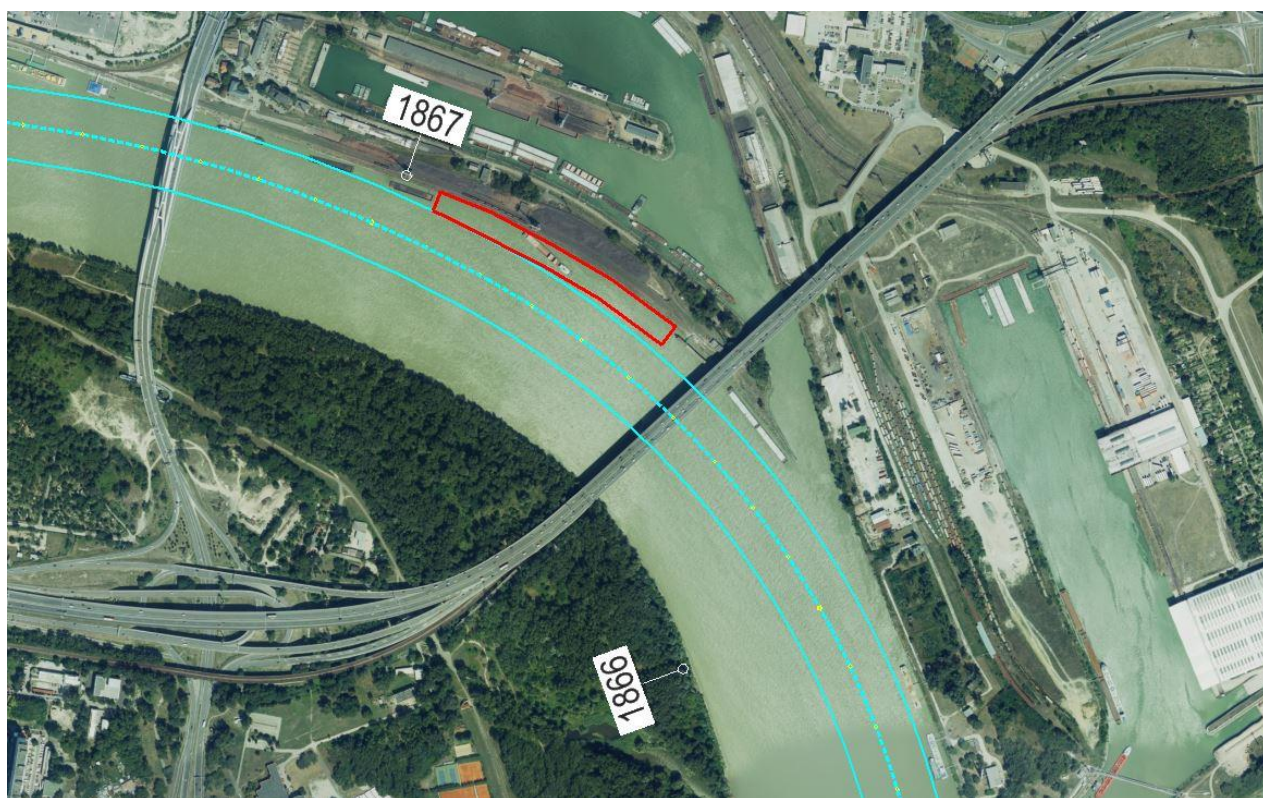
- ☐ yes ☒ no

safety in case of flood or storm

- ☐ yes ☒ no

Parking fees/costs

- ☐ yes ☒ no



Bratislava Port - Manipulacna poloha HTD 19

Danube km: 1866.4 - 1866.5

GPS coordinates:

North: 48° 8' 8.46"

East: 17° 8' 23.99"

berths information

length: 100 m

river bank

- ☒ L left river bank
☐ R right river bank
☐ T at the dam

location

- ☐ DPP "downstream" side of a power plant
☐ DL "downstream" side of a lock (lock entrance area)
☐ UL "upstream" side of a lock (lock entrance area)
☐ UPP "upstream" side of a power plant
☒ ARS along the river stretch
☐ OTHothers (before a harbour entrance in an old river branch)

local berths conditions

- ☒ 0 berthing permitted (i.e. anchoring or making fast to the bank)
☐ 1 berthing area reserved for pushing-navigation vessels that are required to carry one blue cone
☐ 2 berthing area reserved for pushing-navigation vessels that are required to carry two blue cones
☐ 3 berthing area reserved for pushing-navigation vessels that are required to carry three blue cones
☐ OTHother restrictions (only for small motor crafts, only for border control, only for damaged vessels after an accident, max. time allowed for berthing, ...)

facilities

stairs to go ashore

- ☐ yes ☒ no

possibility to load and unload cars from a vessel

- ☐ yes ☒ no

lightning

- ☐ yes ☒ no

river bank construction

- ☐ sheet pile wall
☐ embankment (slope)
☐ quay walls
☐ dam
☐ dolphins
☒ pontoon
☐ natural (wild)

specimen widths

- ☐ 1 beam
☐ 2 beams
☐ 3 beams
☒ one ship breadth

connections

ports/harbours in the surrounding area

- ☒ 10 - 20 km Osobne pristavisko Devin, upstream

villages, cities in the surrounding area

- ☒ < 5 km Bratislava

access road

- ☐ yes ☒ no

maintenance and disposal facilities

electricity supply

- ☐ yes ☒ no

fresh water supply

- ☐ yes ☒ no

waste disposal

- ☐ yes ☒ no

petrol station

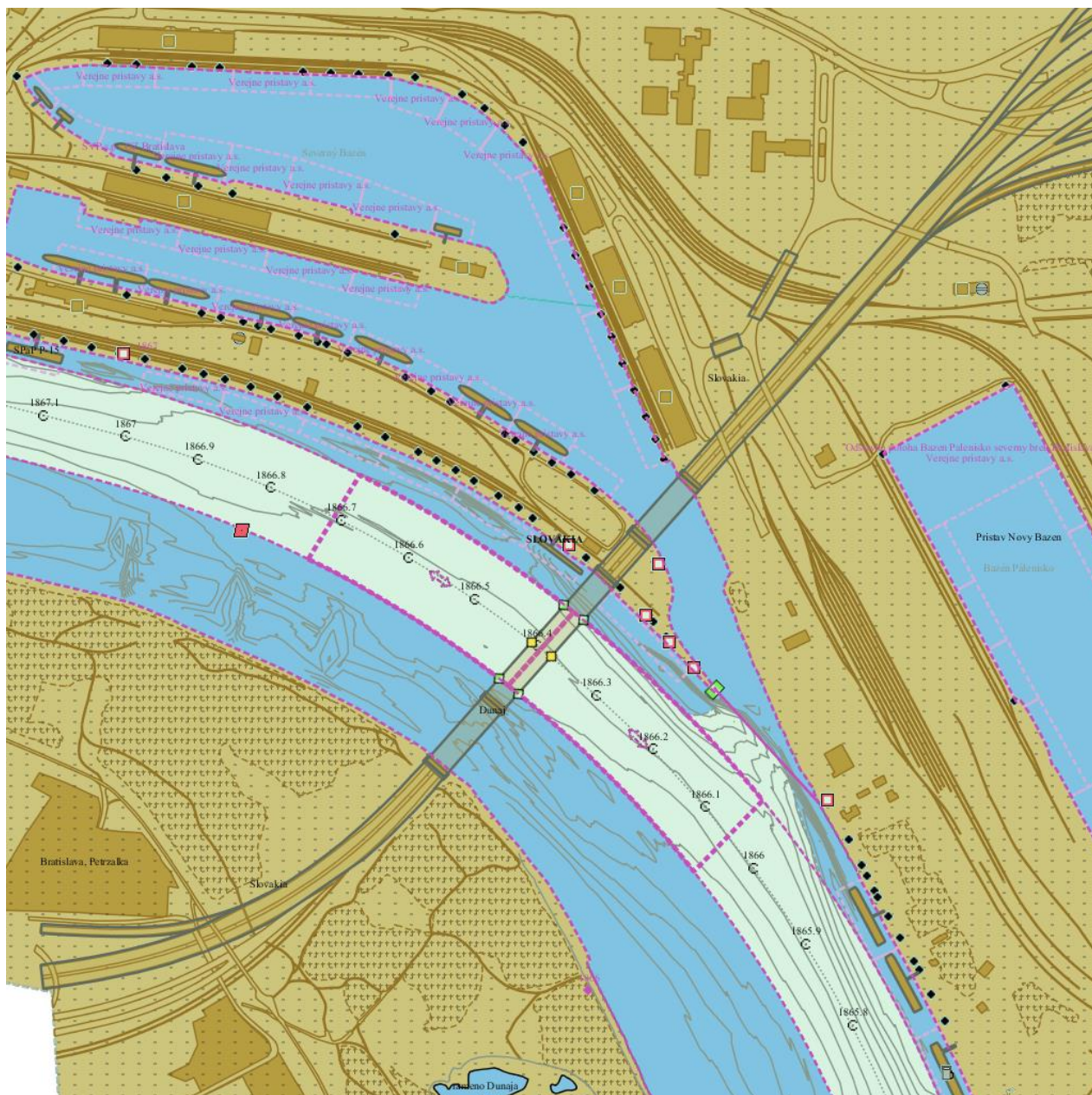
- ☐ yes ☒ no

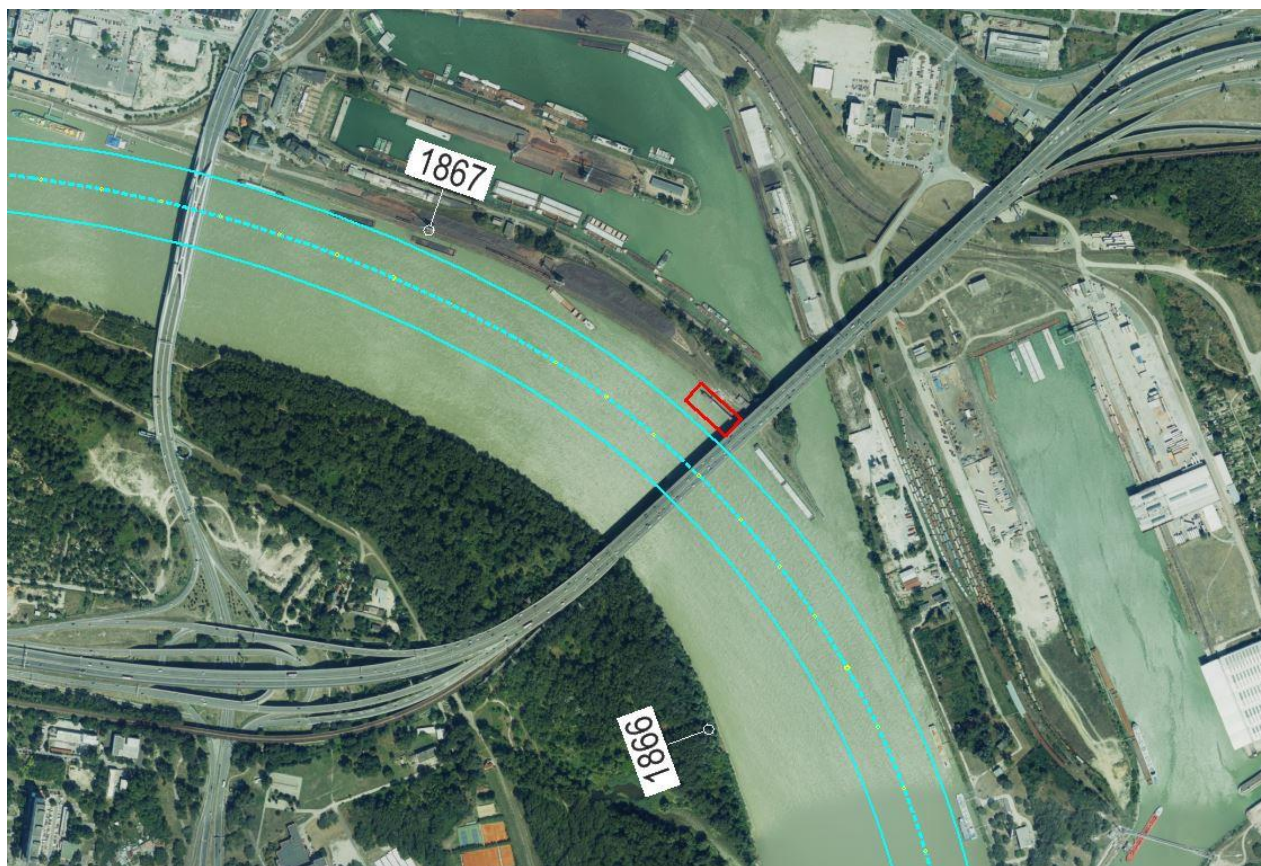
safety in case of flood or storm

- ☐ yes ☒ no

Parking fees/costs

- ☐ yes ☒ no





Bratislava Port - Odstavna poloha HTD 19 (TRANZIT)

Danube km: 1866.25 - 1866.4

GPS coordinates:

North: 48° 8' 5.43"

East: 17° 8' 29.28"

berths information

length: 150 m

river bank

- ☒ L left river bank
☐ R right river bank
☐ T at the dam

location

- ☐ DPP "downstream" side of a power plant
☐ DL "downstream" side of a lock (lock entrance area)
☐ UL "upstream" side of a lock (lock entrance area)
☐ UPP "upstream" side of a power plant
☐ ARS along the river stretch
☒ OTHothers (before a harbour entrance in an old river branch)

local berths conditions

- ☒ 0 berthing permitted (i.e. anchoring or making fast to the bank)
☐ 1 berthing area reserved for pushing-navigation vessels that are required to carry one blue cone
☐ 2 berthing area reserved for pushing-navigation vessels that are required to carry two blue cones
☐ 3 berthing area reserved for pushing-navigation vessels that are required to carry three blue cones
☐ OTHother restrictions (only for small motor crafts, only for border control, only for damaged vessels after an accident, max. time allowed for berthing, ...)

facilities

stairs to go ashore

- ☐ yes ☒ no

possibility to load and unload cars from a vessel

- ☐ yes ☒ no

lightning

- ☐ yes ☒ no

river bank construction

- ☐ sheet pile wall
☐ embankment (slope)
☐ quay walls
☐ dam
☐ dolphins
☒ pontoon
☐ natural (wild)

specimen widths

- ☐ 1 beam
☐ 2 beams
☐ 3 beams
☒ 24 m

connections

ports/harbours in the surrounding area

- ☒ 10 - 20 km Osobne pristavisko Devin, upstream

villages, cities in the surrounding area

- ☒ < 5 km Bratislava

access road

- ☐ yes ☒ no

maintenance and disposal facilities

electricity supply

- ☐ yes ☒ no

fresh water supply

- ☐ yes ☒ no

waste disposal

- ☐ yes ☒ no

petrol station

- ☐ yes ☒ no

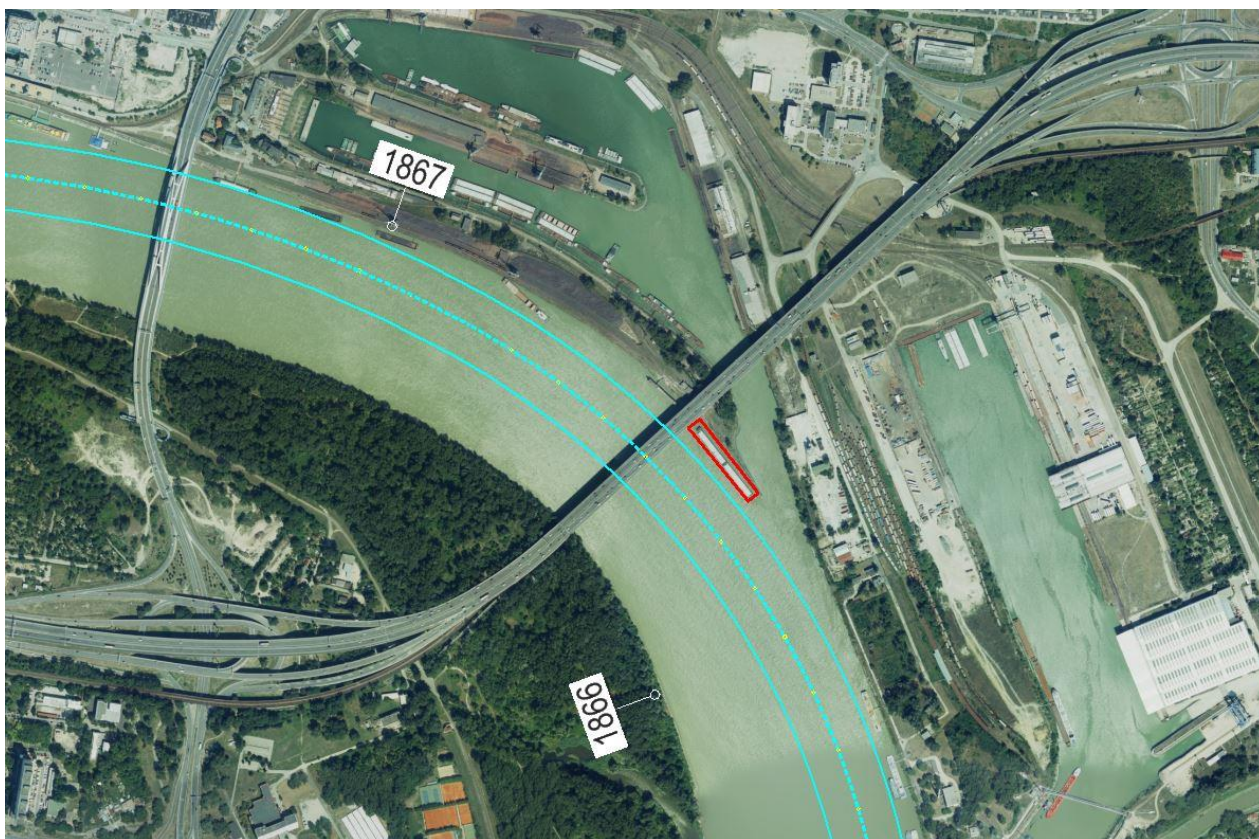
safety in case of flood or storm

- ☐ yes ☒ no

Parking fees/costs

- ☐ yes ☒ no





Bratislava Port - prekladisko mineralnych olejov HTD
51-53

Danube km: 1865.7 - 1866

GPS coordinates:

North: 48° 7' 51.22"

East: 17° 8' 45.4"

berths information

length: 300 m

river bank

- ☒ L left river bank
☐ R right river bank
☐ T at the dam

location

- ☐ DPP "downstream" side of a power plant
☐ DL "downstream" side of o lock (lock entrance area)
☐ UL "upstream" side of o lock (lock entrance area)
☐ UPP "upstream" side of a power plant
☐ ARS along the river stretch
☒ OTHothers (before a harbour entrance in an old river branch)

local berths conditions

- ☐ 0 berthing permitted (i.e. anchoring or making fast to the bank)
☐ 1 berthing area reserved for pushing-navigation vessels that are required to carry one blue cone
☐ 2 berthing area reserved for pushing-navigation vessels that are required to carry two blue cones
☐ 3 berthing area reserved for pushing-navigation vessels that are required to carry three blue cones
☒ OTHother restrictions (only for small motor crafts, only for border control, only for damaged vessels after an accident, max. time allowed for berthing, ...)

facilities

stairs to go ashore

- ☐ yes ☒ no

possibility to load and unload cars from a vessel

- ☐ yes ☒ no

lightning

- ☐ yes ☒ no

river bank construction

- ☐ sheet pile wall
☐ embankment (slope)
☐ quay walls
☐ dam
☐ dolphins
☒ pontoon
☐ natural (wild)

specimen widths

- ☐ 1 beam
☐ 2 beams
☐ 3 beams
☒ one ship breadth

connections

ports/harbours in the surrounding area

- ☒ 10 - 20 km Osobne pristavisko Devin, upstream

villages, cities in the surrounding area

- ☒ < 5 km Bratislava

access road

- ☒ yes ☐ no

maintenance and disposal facilities

electricity supply

- ☐ yes ☒ no

fresh water supply

- ☐ yes ☒ no

waste disposal

- ☐ yes ☒ no

petrol station

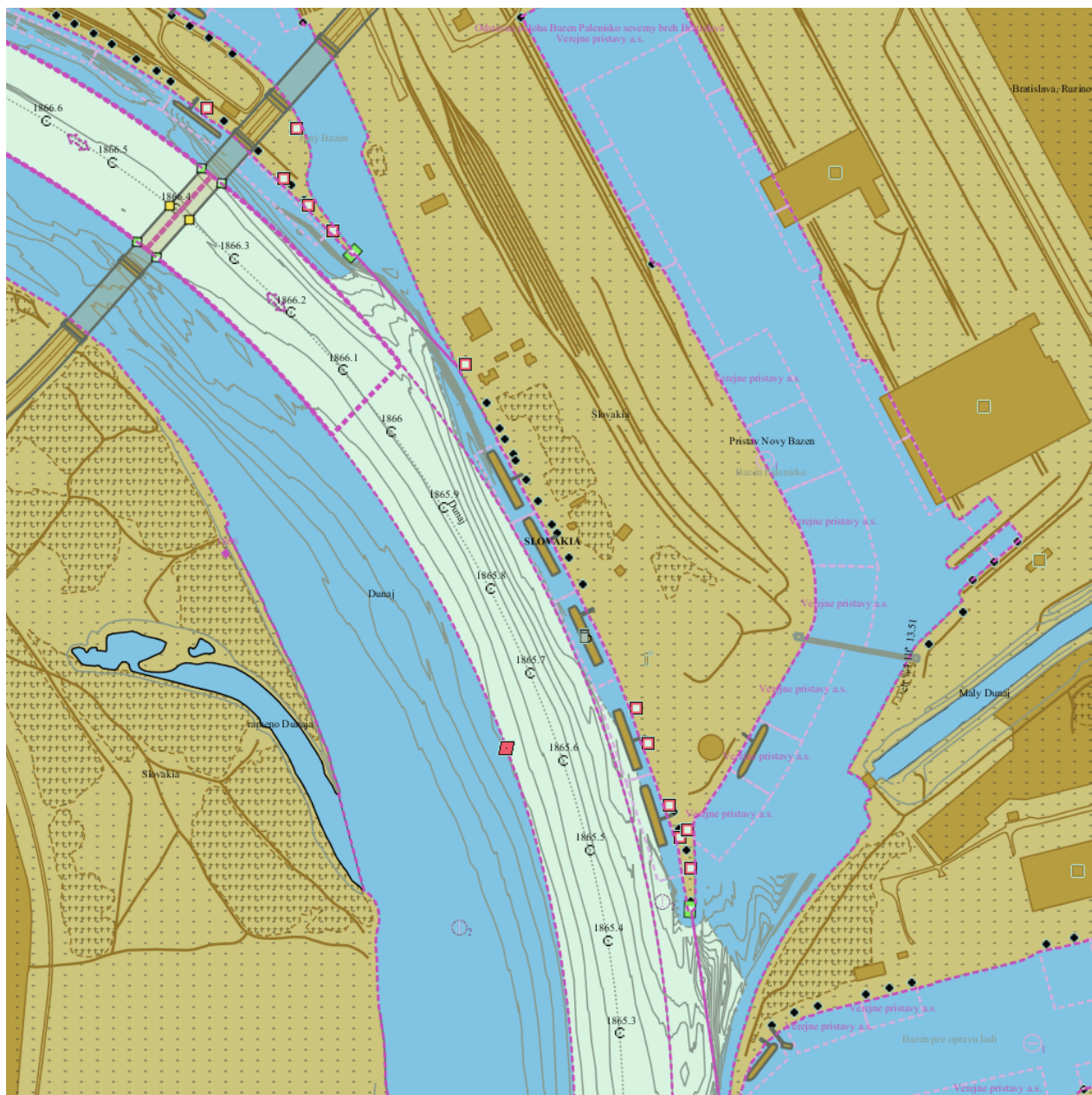
- ☐ yes ☒ no

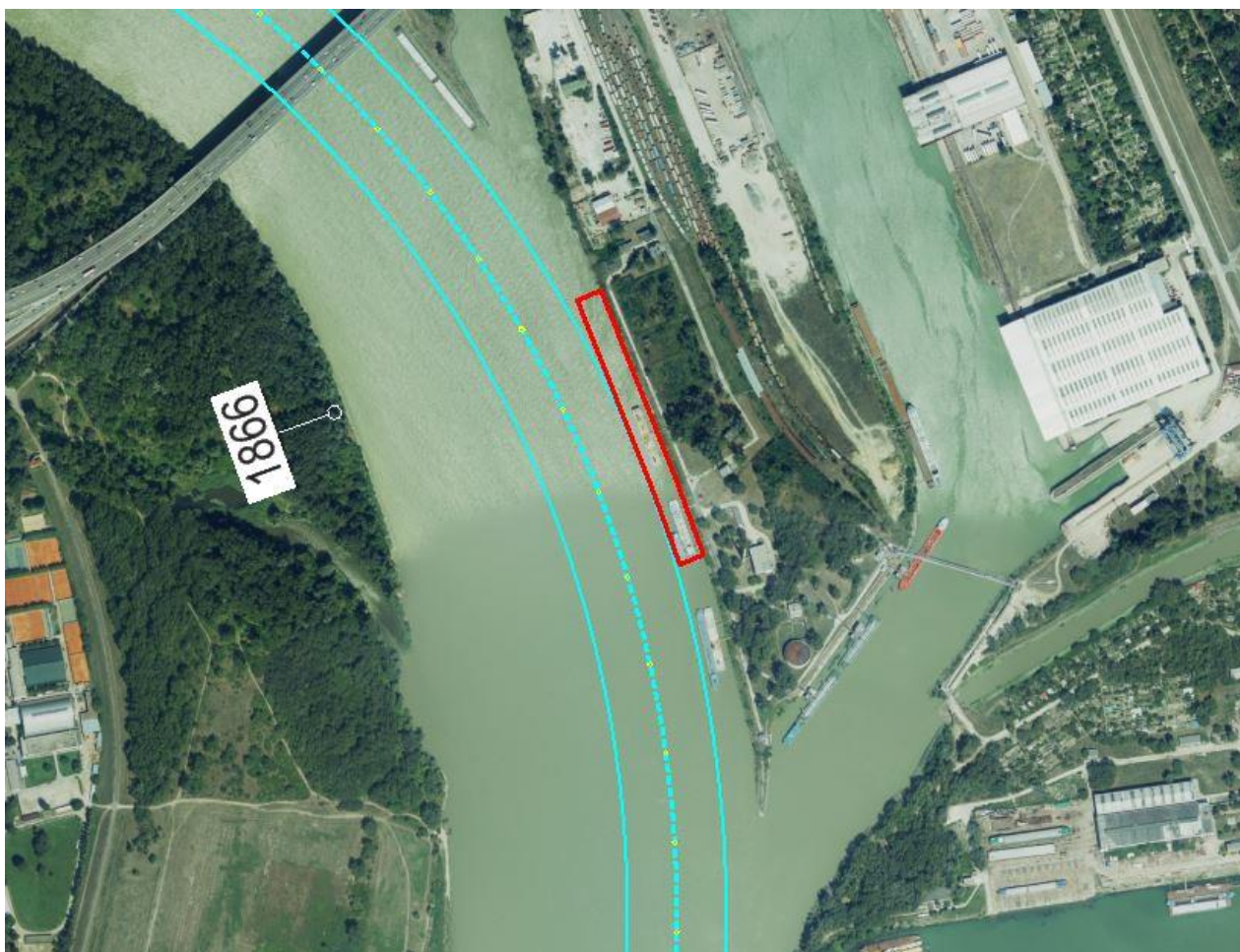
safety in case of flood or storm

- ☐ yes ☒ no

Parking fees/costs

- ☐ yes ☒ no





Bratislava Port - prekladisko mineralnych olejov HTD
54-55

Danube km: 1865.4 - 1865.7

GPS coordinates:

North: 48° 7' 47.84"

East: 17° 8' 47.97"

berths information

length: 300 m

river bank

- ☒ L left river bank
☐ R right river bank
☐ T at the dam

location

- ☐ DPP "downstream" side of a power plant
☐ DL "downstream" side of a lock (lock entrance area)
☐ UL "upstream" side of a lock (lock entrance area)
☐ UPP "upstream" side of a power plant
☐ ARS along the river stretch
☒ OTH others (before a harbour entrance in an old river branch)

local berths conditions

- ☐ 0 berthing permitted (i.e. anchoring or making fast to the bank)
☒ 1 berthing area reserved for pushing-navigation vessels that are required to carry one blue cone
☐ 2 berthing area reserved for pushing-navigation vessels that are required to carry two blue cones
☐ 3 berthing area reserved for pushing-navigation vessels that are required to carry three blue cones
☐ OTH other restrictions (only for small motor crafts, only for border control, only for damaged vessels after an accident, max. time allowed for berthing, ...)

facilities

stairs to go ashore

- ☐ yes ☒ no

possibility to load and unload cars from a vessel

- ☐ yes ☒ no

lightning

- ☐ yes ☒ no

river bank construction

- ☐ sheet pile wall
☐ embankment (slope)
☐ quay walls
☐ dam
☐ dolphins
☒ pontoon
☐ natural (wild)

specimen widths

- ☐ 1 beam
☐ 2 beams
☐ 3 beams
☒ one ship breadth

connections

ports/harbours in the surrounding area

- ☒ 10 - 20 km Osobne pristavisko Devin

villages, cities in the surrounding area

- ☒ < 5 km Bratislava

access road

- ☒ yes ☐ no

maintenance and disposal facilities

electricity supply

- ☐ yes ☒ no

fresh water supply

- ☐ yes ☒ no

waste disposal

- ☐ yes ☒ no

petrol station

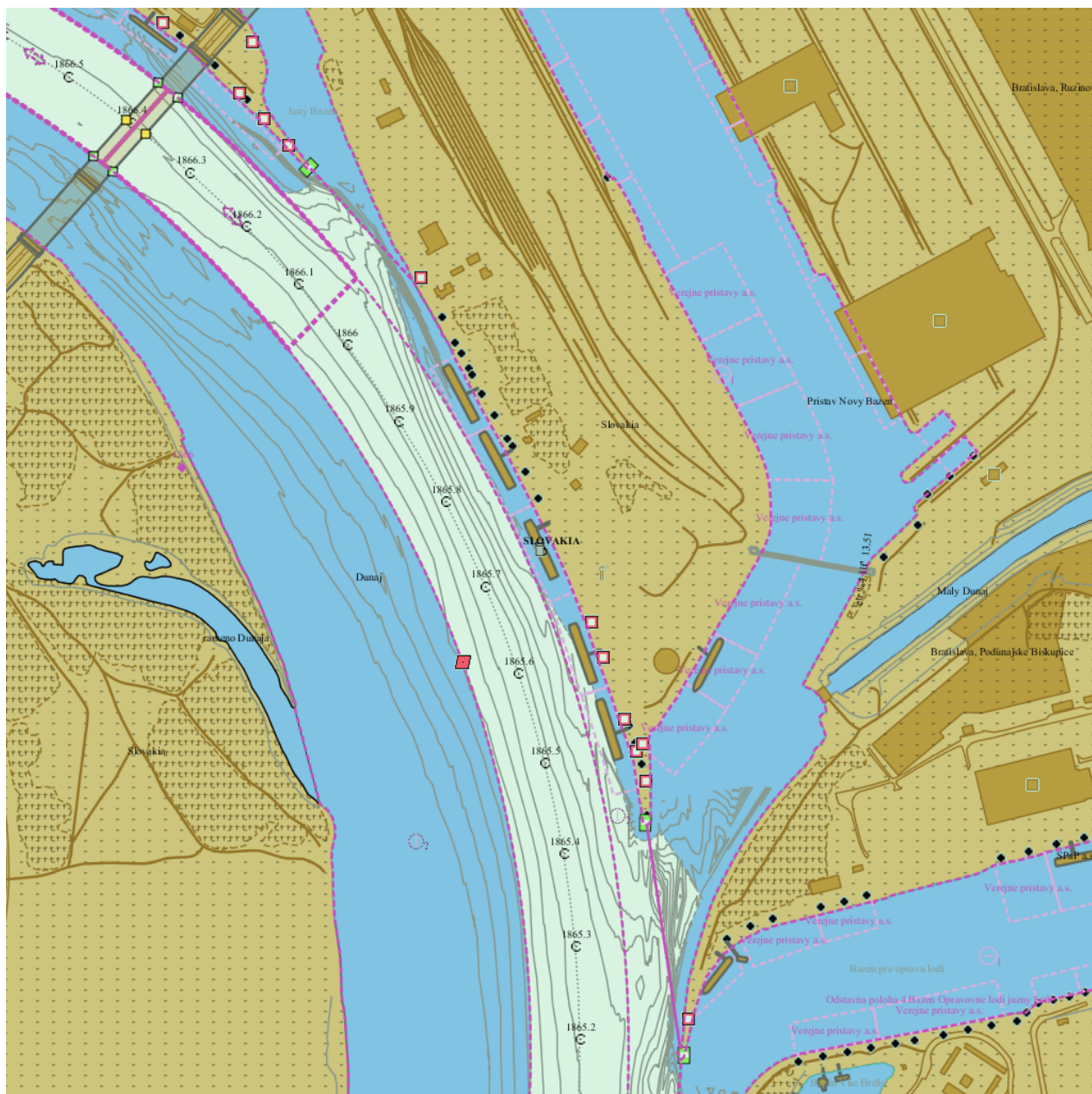
- ☐ yes ☒ no

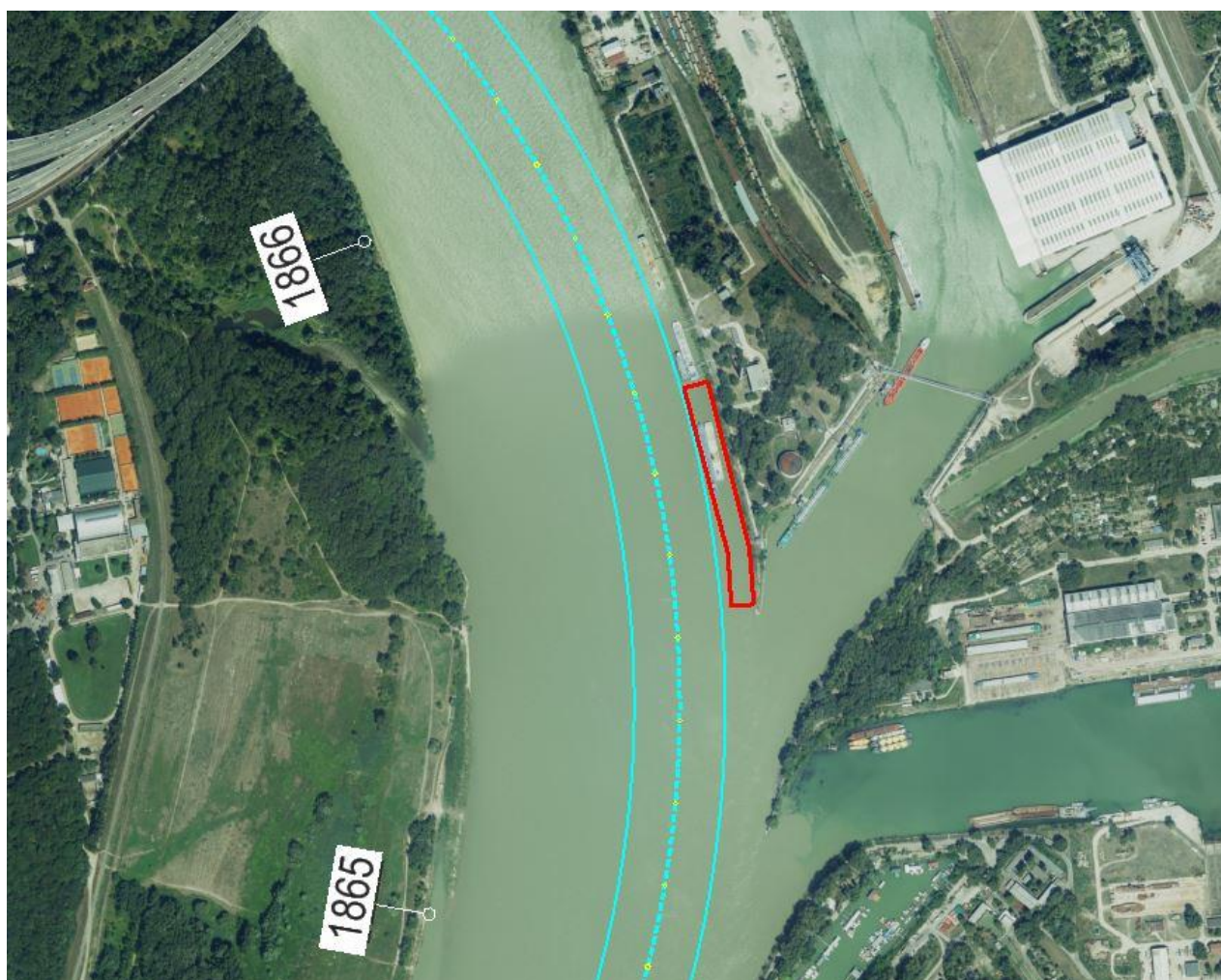
safety in case of flood or storm

- ☐ yes ☒ no

Parking fees/costs

- ☐ yes ☒ no





Bratislava Port - Odstavna poloha HTD 121L-123L

Danube km: 1864.3 - 1864.6

GPS coordinates:

North: 48° 6' 55.53"

East: 17° 8' 38.97"

berths information

length: 300 m

river bank

- ☒ L left river bank
☐ R right river bank
☐ T at the dam

location

- ☐ DPP "downstream" side of a power plant
☐ DL "downstream" side of a lock (lock entrance area)
☐ UL "upstream" side of a lock (lock entrance area)
☐ UPP "upstream" side of a power plant
☐ ARS along the river stretch
☒ OTHothers (before a harbour entrance in an old river branch)

local berths conditions

- ☒ 0 berthing permitted (i.e. anchoring or making fast to the bank)
☐ 1 berthing area reserved for pushing-navigation vessels that are required to carry one blue cone
☐ 2 berthing area reserved for pushing-navigation vessels that are required to carry two blue cones
☐ 3 berthing area reserved for pushing-navigation vessels that are required to carry three blue cones
☐ OTHother restrictions (only for small motor crafts, only for border control, only for damaged vessels after an accident, max. time allowed for berthing, ...)

facilities

stairs to go ashore

- ☐ yes ☒ no

possibility to load and unload cars from a vessel

- ☐ yes ☒ no

lightning

- ☐ yes ☒ no

river bank construction

- ☐ sheet pile wall
☐ embankment (slope)
☐ quay walls
☐ dam
☐ dolphins
☐ pontoon
☒ natural (wild)

specimen widths

- ☐ 1 beam
☐ 2 beams
☐ 3 beams
☒ 12m

connections

ports/harbours in the surrounding area

- ☒ 10 - 20 km Osobne pristavisko Devin, upstream

villages, cities in the surrounding area

- ☒ < 5 km Bratislava

access road

- ☐ yes ☒ no

maintenance and disposal facilities

electricity supply

- ☐ yes ☒ no

fresh water supply

- ☐ yes ☒ no

waste disposal

- ☐ yes ☒ no

petrol station

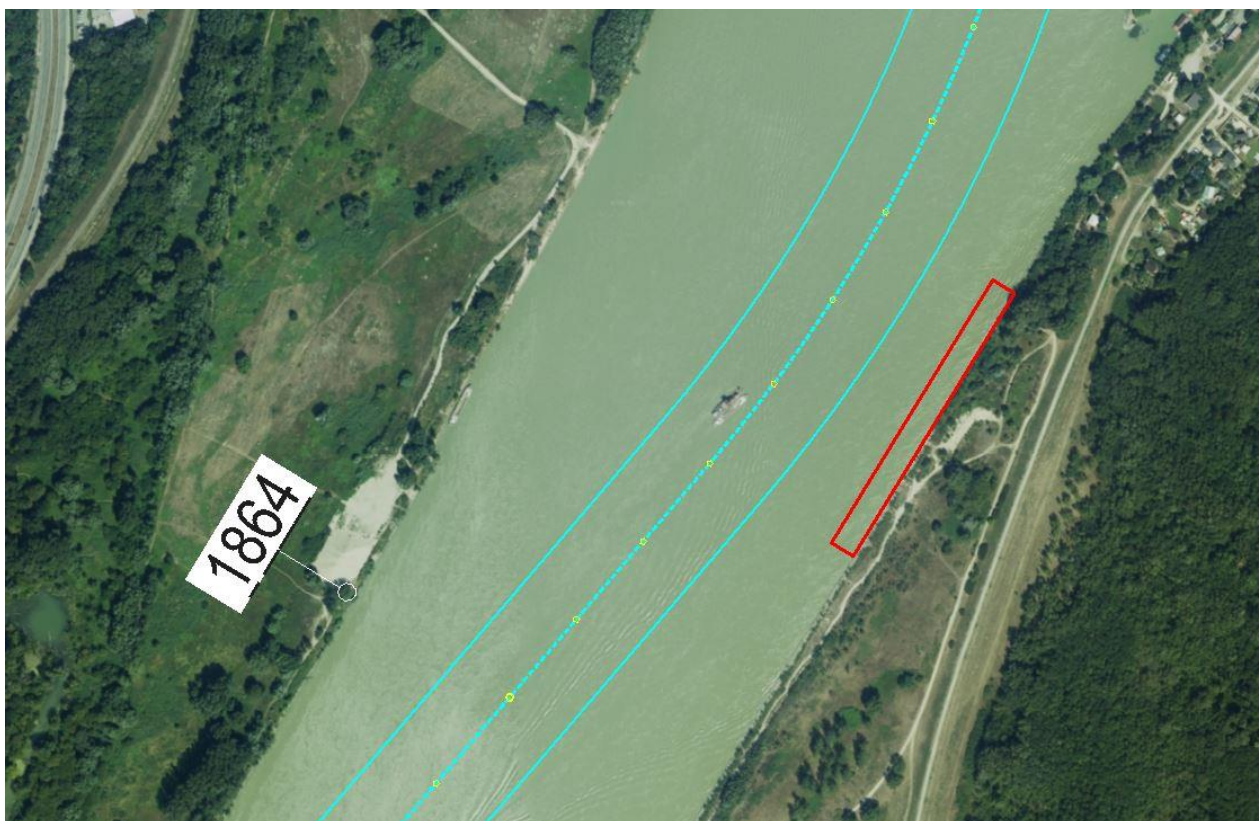
- ☐ yes ☒ no

safety in case of flood or storm

- ☐ yes ☒ no

Parking fees/costs

- ☐ yes ☒ no



Bratislava Port - Odstavna poloha 124L

Danube km: 1864.2 - 1864.3

GPS coordinates:

North: 48° 6' 52.74"

East: 17° 8' 37.02"

berths information

length: 100 m

river bank

- ☒ L left river bank
☐ R right river bank
☐ T at the dam

location

- ☐ DPP "downstream" side of a power plant
☐ DL "downstream" side of a lock (lock entrance area)
☐ UL "upstream" side of a lock (lock entrance area)
☐ UPP "upstream" side of a power plant
☐ ARS along the river stretch
☒ OTHothers (before a harbour entrance in an old river branch)

local berths conditions

- ☐ 0 berthing permitted (i.e. anchoring or making fast to the bank)
☒ 1 berthing area reserved for pushing-navigation vessels that are required to carry one blue cone
☐ 2 berthing area reserved for pushing-navigation vessels that are required to carry two blue cones
☐ 3 berthing area reserved for pushing-navigation vessels that are required to carry three blue cones
☐ OTHother restrictions (only for small motor crafts, only for border control, only for damaged vessels after an accident, max. time allowed for berthing, ...)

facilities

stairs to go ashore

- ☐ yes ☒ no

possibility to load and unload cars from a vessel

- ☐ yes ☒ no

lightning

- ☐ yes ☒ no

river bank construction

- ☐ sheet pile wall
☐ embankment (slope)
☐ quay walls
☐ dam
☐ dolphins
☐ pontoon
☒ natural (wild)

specimen widths

- ☐ 1 beam
☐ 2 beams
☐ 3 beams
☒ 12m

connections

ports/harbours in the surrounding area

- ☒ 10 - 20 km Osobne pristavisko Devin, upstream

villages, cities in the surrounding area

- ☒ < 5 km Bratislava

access road

- ☐ yes ☒ no

maintenance and disposal facilities

electricity supply

- ☐ yes ☒ no

fresh water supply

- ☐ yes ☒ no

waste disposal

- ☐ yes ☒ no

petrol station

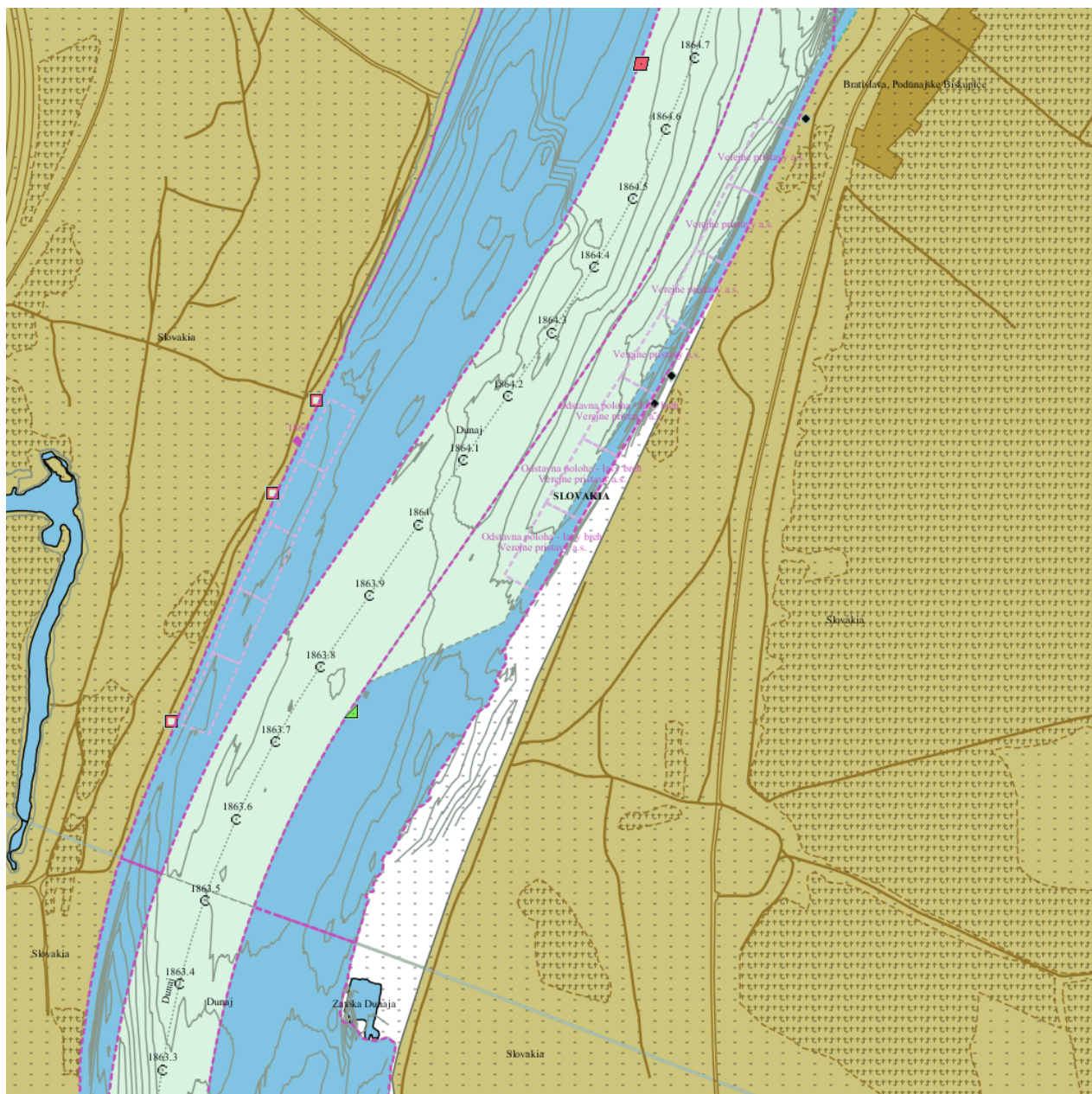
- ☐ yes ☒ no

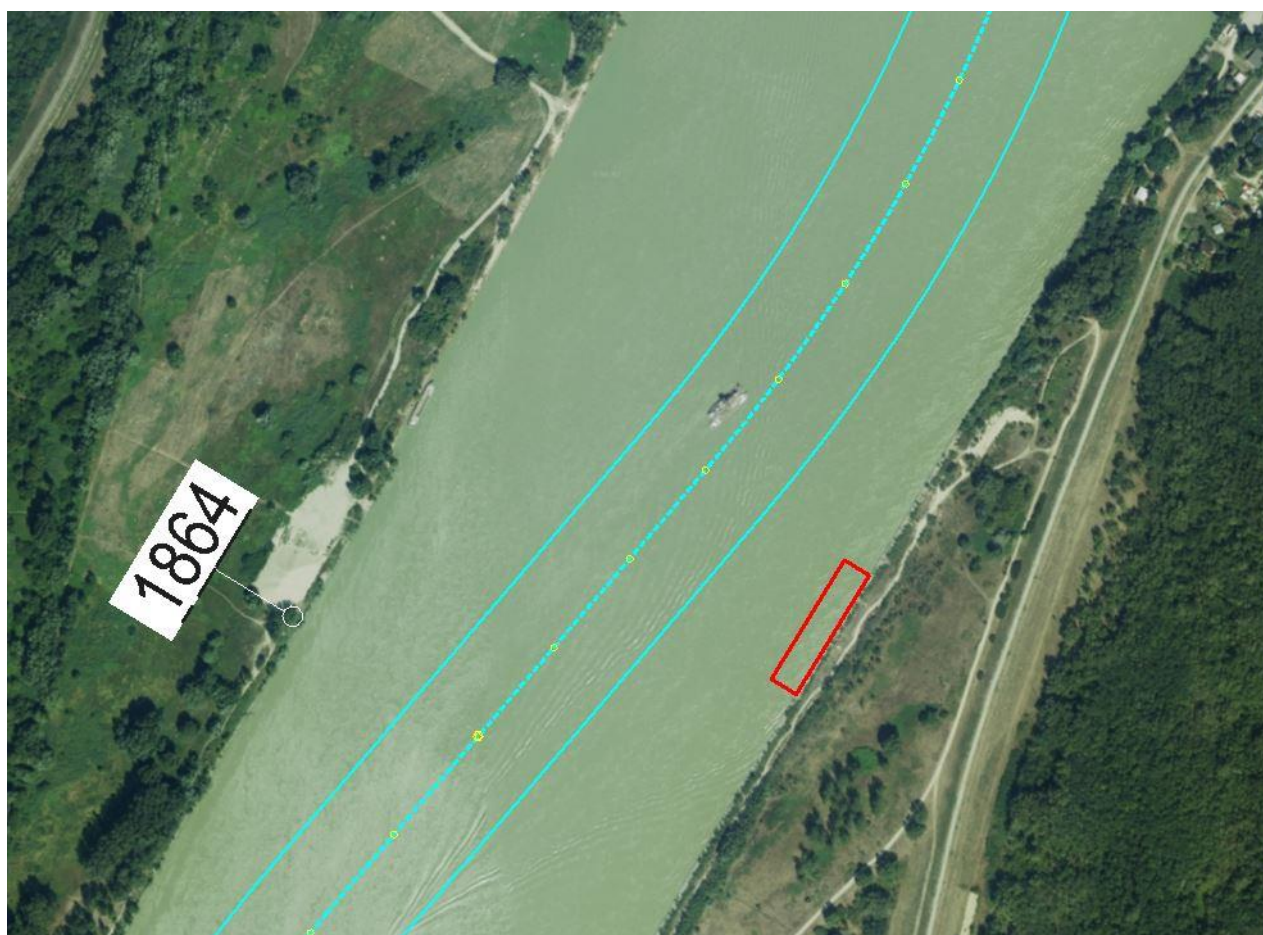
safety in case of flood or storm

- ☐ yes ☒ no

Parking fees/costs

- ☐ yes ☒ no





Bratislava Port - Odstavna poloha HTD 128L-131L

Danube km: 1863.7 - 1864.1

GPS coordinates:

North: 48° 6' 47.53"

East: 17° 8' 16.82"

berths information

length: 400 m

river bank

- ☐ L left river bank
☒ R right river bank
☐ T at the dam

location

- ☐ DPP "downstream" side of a power plant
☐ DL "downstream" side of a lock (lock entrance area)
☐ UL "upstream" side of a lock (lock entrance area)
☐ UPP "upstream" side of a power plant
☐ ARS along the river stretch
☒ OTHothers (before a harbour entrance in an old river branch)

local berths conditions

- ☒ 0 berthing permitted (i.e. anchoring or making fast to the bank)
☐ 1 berthing area reserved for pushing-navigation vessels that are required to carry one blue cone
☐ 2 berthing area reserved for pushing-navigation vessels that are required to carry two blue cones
☐ 3 berthing area reserved for pushing-navigation vessels that are required to carry three blue cones
☐ OTHother restrictions (only for small motor crafts, only for border control, only for damaged vessels after an accident, max. time allowed for berthing, ...)

facilities

stairs to go ashore

- ☐ yes ☒ no

possibility to load and unload cars from a vessel

- ☐ yes ☒ no

lightning

- ☐ yes ☒ no

river bank construction

- ☐ sheet pile wall
☐ embankment (slope)
☐ quay walls
☐ dam
☐ dolphins
☐ pontoon
☒ natural (wild)

specimen widths

- ☐ 1 beam
☐ 2 beams
☐ 3 beams
☒ 24m

connections

ports/harbours in the surrounding area

- ☒ 10 - 20 km Osobne pristavisko Devin, upstream

villages, cities in the surrounding area

- ☒ < 5 km Bratislava

access road

- ☐ yes ☒ no

maintenance and disposal facilities

electricity supply

- ☐ yes ☒ no

fresh water supply

- ☐ yes ☒ no

waste disposal

- ☐ yes ☒ no

petrol station

- ☐ yes ☒ no

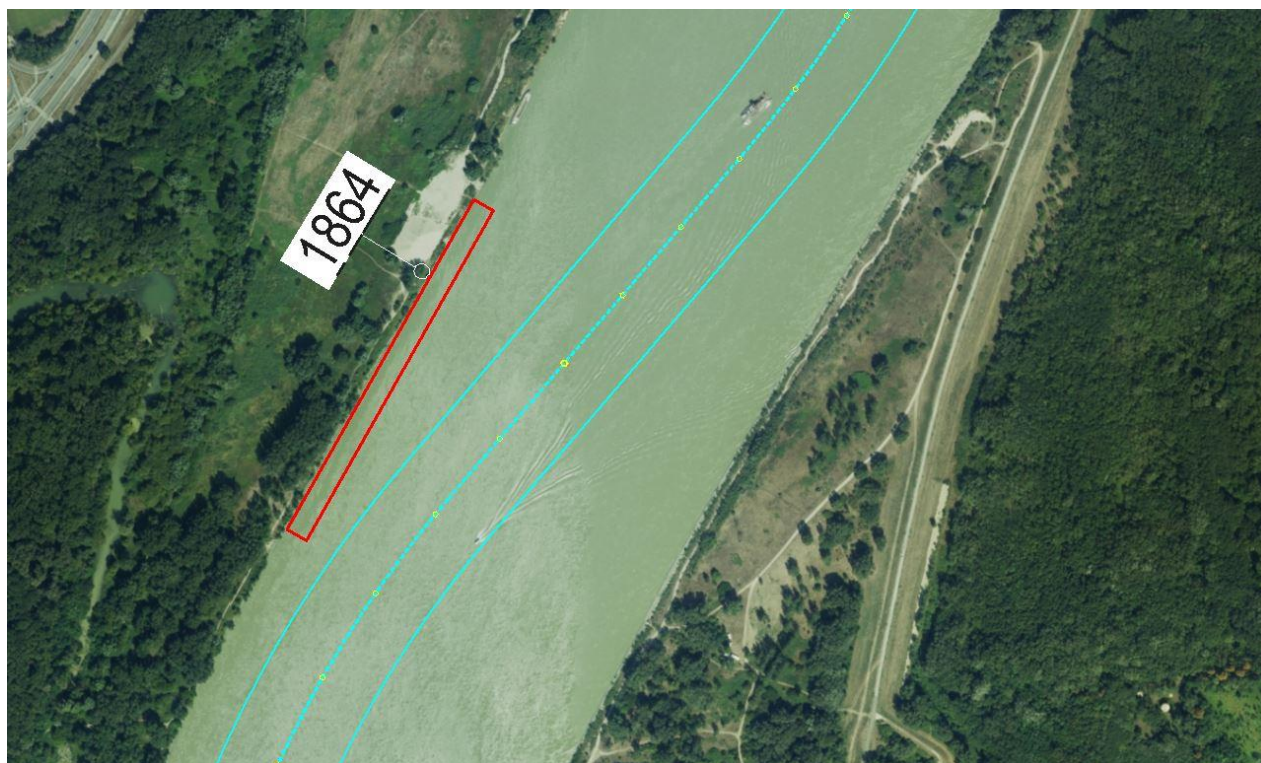
safety in case of flood or storm

- ☐ yes ☒ no

Parking fees/costs

- ☐ yes ☒ no





Komarino Port - Odstavne polohy HTD 1-8

Danube km: 1769.2 - 1770

GPS coordinates:

North: 47° 45' 17.67"

East: 18° 6' 9.6"

berths information

length: 800 m

river bank

- ☒ L left river bank
- ☐ R right river bank
- ☐ T at the dam

location

- ☐ DPP "downstream" side of a power plant
- ☐ DL "downstream" side of a lock (lock entrance area)
- ☐ UL "upstream" side of a lock (lock entrance area)
- ☐ UPP "upstream" side of a power plant
- ☒ ARS along the river stretch
- ☐ OTHothers (before a harbour entrance in an old river branch)

local berths conditions

- ☒ 0 berthing permitted (i.e. anchoring or making fast to the bank)
- ☐ 1 berthing area reserved for pushing-navigation vessels that are required to carry one blue cone
- ☐ 2 berthing area reserved for pushing-navigation vessels that are required to carry two blue cones
- ☐ 3 berthing area reserved for pushing-navigation vessels that are required to carry three blue cones
- ☐ OTHother restrictions (only for small motor crafts, only for border control, only for damaged vessels after an accident, max. time allowed for berthing, ...)

facilities

stairs to go ashore

- ☐ yes ☒ no

possibility to load and unload cars from a vessel

- ☐ yes ☒ no

lightning

- ☐ yes ☒ no

river bank construction

- ☐ sheet pile wall
- ☐ embankment (slope)
- ☐ quay walls
- ☐ dam
- ☐ dolphins
- ☐ pontoon
- ☒ natural (wild)

specimen widths

- ☐ 1 beam
- ☐ 2 beams
- ☐ 3 beams
- ☒ three ship breadths

connections

ports/harbours in the surrounding area

- ☒ > 30km Sturovo Port, downstream

villages, cities in the surrounding area

- ☒ < 5 km Komarno

access road

- ☐ yes ☒ no

maintenance and disposal facilities

electricity supply

- ☐ yes ☒ no

fresh water supply

- ☐ yes ☒ no

waste disposal

- ☐ yes ☒ no

petrol station

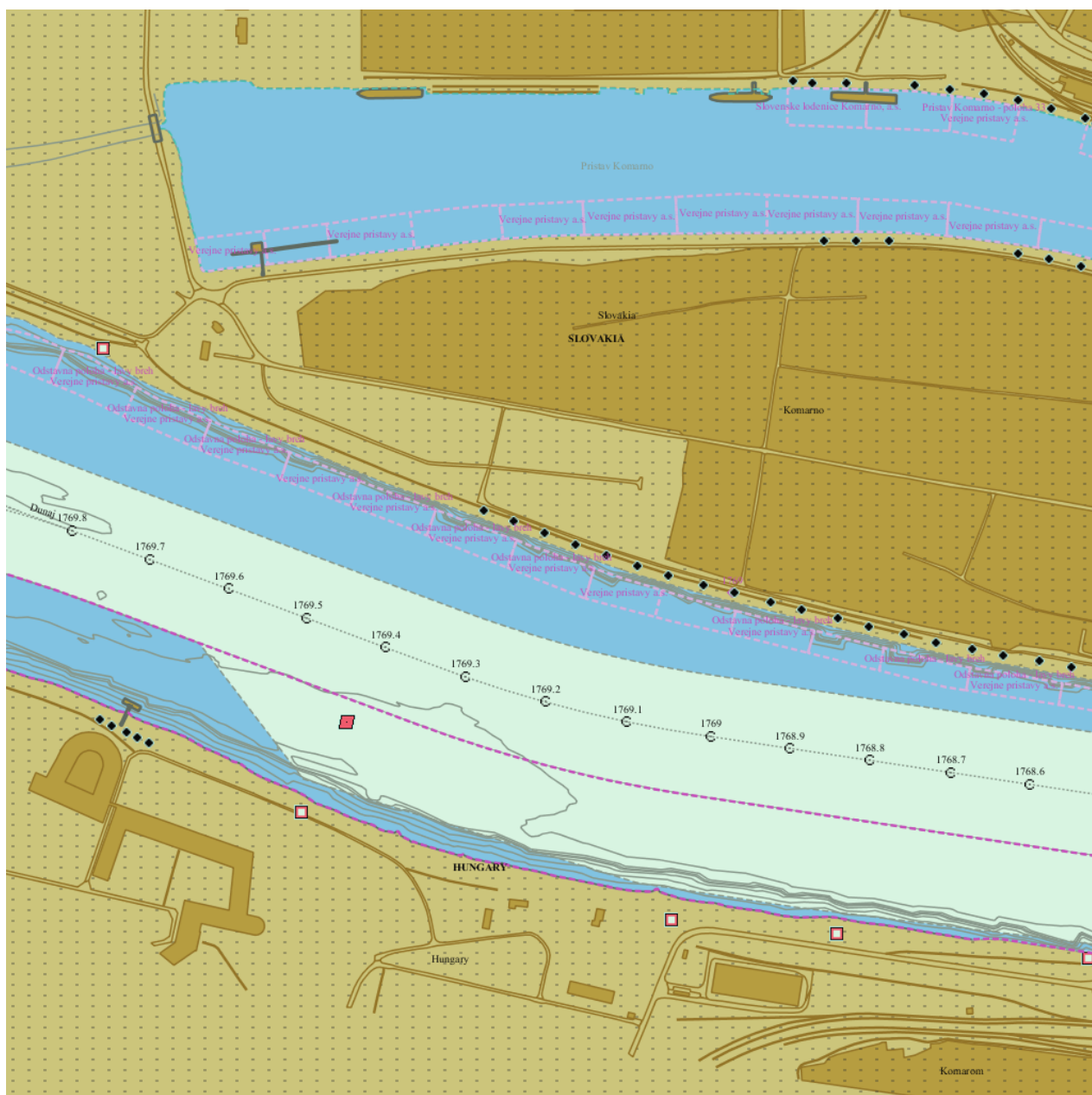
- ☐ yes ☒ no

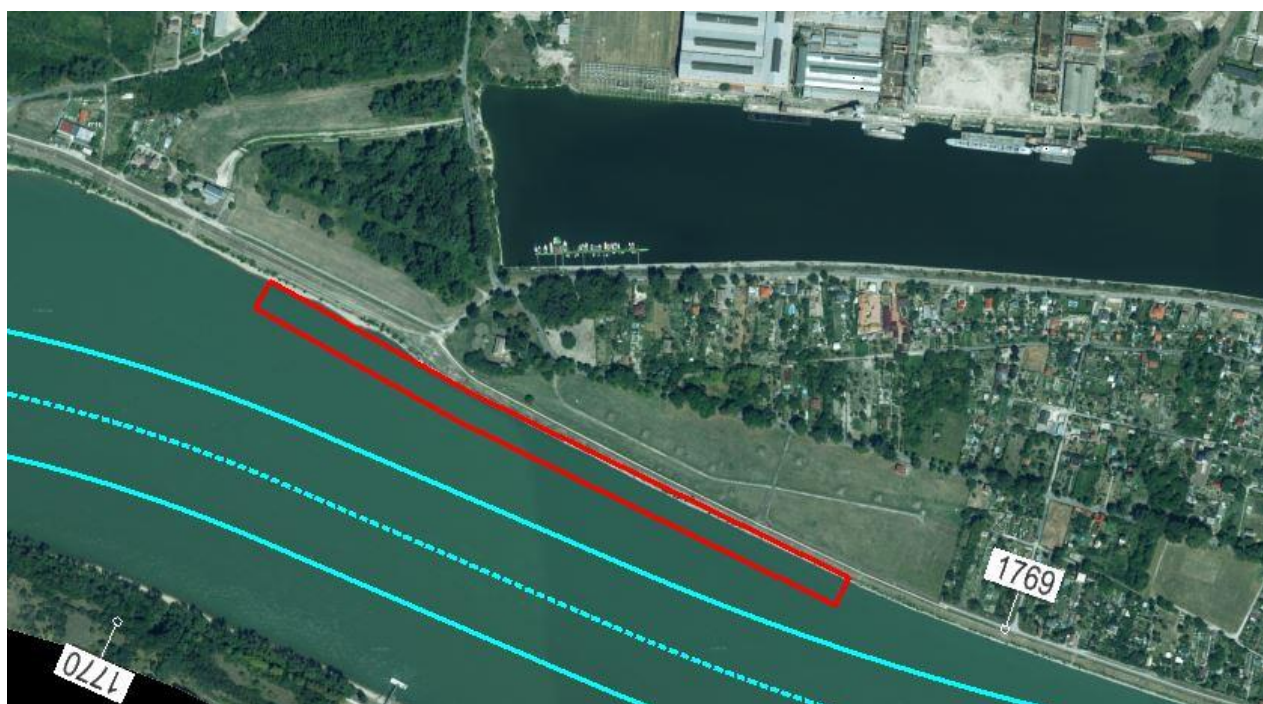
safety in case of flood or storm

- ☐ yes ☒ no

Parking fees/costs

- ☐ yes ☒ no





Komarno Port - Odstavne polohy HTD 9-19

Danube km: 1768.1 - 1769.2

GPS coordinates:

North: 47° 45' 10.83"

East: 18° 6' 59.85"

berths information

length: 1100 m

river bank

- ☒ L left river bank
☐ R right river bank
☐ T at the dam

location

- ☐ DPP "downstream" side of a power plant
☐ DL "downstream" side of a lock (lock entrance area)
☐ UL "upstream" side of a lock (lock entrance area)
☐ UPP "upstream" side of a power plant
☒ ARS along the river stretch
☐ OTHothers (before a harbour entrance in an old river branch)

local berths conditions

- ☒ 0 berthing permitted (i.e. anchoring or making fast to the bank)
☐ 1 berthing area reserved for pushing-navigation vessels that are required to carry one blue cone
☐ 2 berthing area reserved for pushing-navigation vessels that are required to carry two blue cones
☐ 3 berthing area reserved for pushing-navigation vessels that are required to carry three blue cones
☐ OTHother restrictions (only for small motor crafts, only for border control, only for damaged vessels after an accident, max. time allowed for berthing, ...)

facilities

stairs to go ashore

- ☐ yes ☒ no

possibility to load and unload cars from a vessel

- ☐ yes ☒ no

lightning

- ☐ yes ☒ no

river bank construction

- ☐ sheet pile wall
☐ embankment (slope)
☐ quay walls
☐ dam
☐ dolphins
☐ pontoon
☒ natural (wild)

specimen widths

- ☐ 1 beam
☐ 2 beams
☐ 3 beams
☒ four ship breadths

connections

ports/harbours in the surrounding area

- ☒ > 30km Sturovo Port, downstream

villages, cities in the surrounding area

- ☒ < 5 km Komarno

access road

- ☒ yes ☐ no

maintenance and disposal facilities

electricity supply

- ☐ yes ☒ no

fresh water supply

- ☐ yes ☒ no

waste disposal

- ☐ yes ☒ no

petrol station

- ☐ yes ☒ no

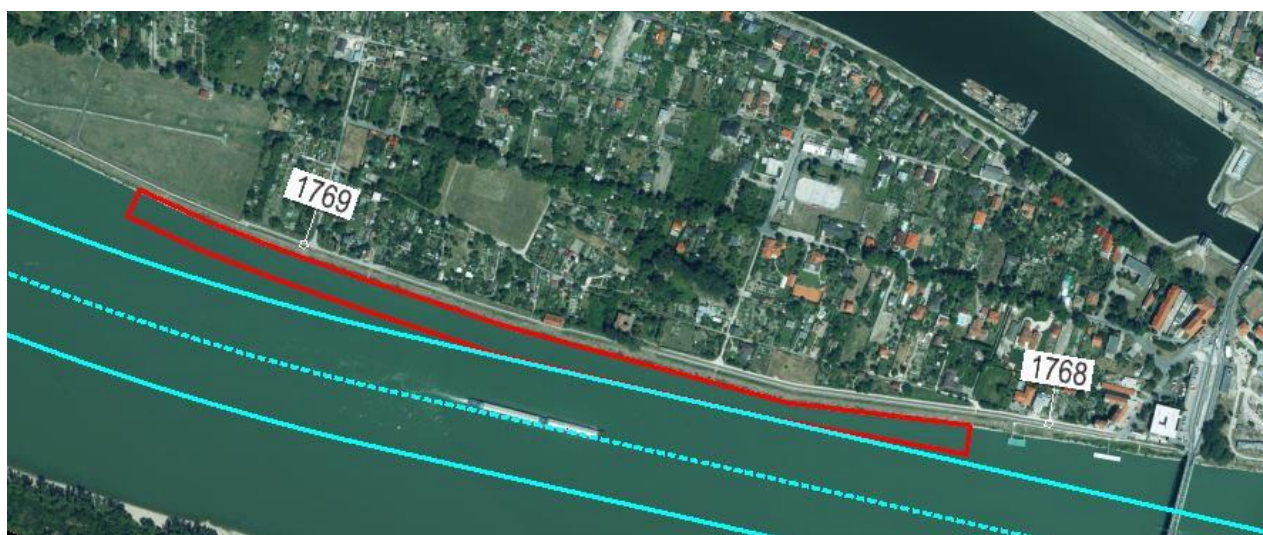
safety in case of flood or storm

- ☐ yes ☒ no

Parking fees/costs

- ☐ yes ☒ no





Komarno Port - polohy OPKN 21-24

Danube km: 1767.47 - 1768.1

GPS coordinates:

North: 47° 45' 10.57"

East: 18° 7' 5.3"

berths information

length: 630 m

river bank

- ☒ L left river bank
- ☐ R right river bank
- ☐ T at the dam

location

- ☐ DPP "downstream" side of a power plant
- ☐ DL "downstream" side of a lock (lock entrance area)
- ☐ UL "upstream" side of a lock (lock entrance area)
- ☐ UPP "upstream" side of a power plant
- ☒ ARS along the river stretch
- ☐ OTHothers (before a harbour entrance in an old river branch)

local berths conditions

- ☐ 0 berthing permitted (i.e. anchoring or making fast to the bank)
- ☐ 1 berthing area reserved for pushing-navigation vessels that are required to carry one blue cone
- ☐ 2 berthing area reserved for pushing-navigation vessels that are required to carry two blue cones
- ☐ 3 berthing area reserved for pushing-navigation vessels that are required to carry three blue cones
- ☒ OTHother restrictions (only for small motor crafts, only for border control, only for damaged vessels after an accident, max. time allowed for berthing, ...)

facilities

stairs to go ashore

- ☐ yes ☒ no

possibility to load and unload cars from a vessel

- ☐ yes ☒ no

lightning

- ☐ yes ☒ no

river bank construction

- ☐ sheet pile wall
- ☐ embankment (slope)
- ☐ quay walls
- ☐ dam
- ☐ dolphins
- ☐ pontoon
- ☒ natural (wild)

specimen widths

- ☐ 1 beam
- ☐ 2 beams
- ☐ 3 beams
- ☒ 24m

connections

ports/harbours in the surrounding area

- ☒ > 30km Sturovo Port, downstream

villages, cities in the surrounding area

- ☒ < 5 km Komarno

access road

- ☒ yes ☐ no

maintenance and disposal facilities

electricity supply

- ☐ yes ☒ no

fresh water supply

- ☐ yes ☒ no

waste disposal

- ☐ yes ☒ no

petrol station

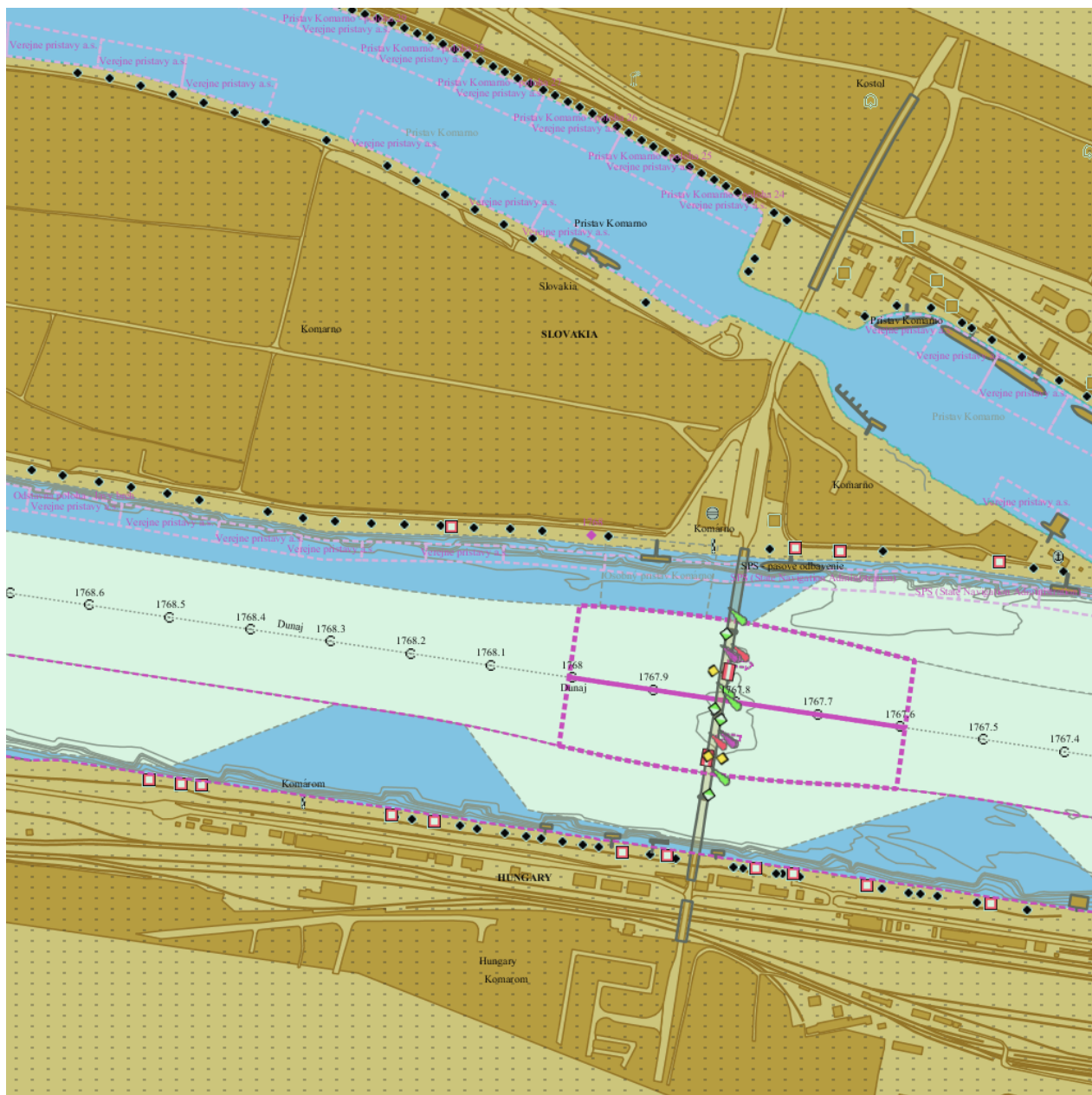
- ☐ yes ☒ no

safety in case of flood or storm

- ☐ yes ☒ no

Parking fees/costs

- ☐ yes ☒ no





Komarino Port - kontrola SOD - poloha HTD 25

Danube km: 1767.36 - 1767.47

GPS coordinates:

North: 47° 45' 8.78"

East: 18° 7' 36.69"

berths information

length: 110 m

river bank

- ☒ L left river bank
- ☐ R right river bank
- ☐ T at the dam

location

- ☐ DPP "downstream" side of a power plant
- ☐ DL "downstream" side of a lock (lock entrance area)
- ☐ UL "upstream" side of a lock (lock entrance area)
- ☐ UPP "upstream" side of a power plant
- ☐ ARS along the river stretch
- ☒ OTHothers (before a harbour entrance in an old river branch)

local berths conditions

- ☐ 0 berthing permitted (i.e. anchoring or making fast to the bank)
- ☐ 1 berthing area reserved for pushing-navigation vessels that are required to carry one blue cone
- ☐ 2 berthing area reserved for pushing-navigation vessels that are required to carry two blue cones
- ☐ 3 berthing area reserved for pushing-navigation vessels that are required to carry three blue cones
- ☒ OTHother restrictions (only for small motor crafts, only for border control, only for damaged vessels after an accident, max. time allowed for berthing, ...)

facilities

stairs to go ashore

- ☐ yes ☒ no

possibility to load and unload cars from a vessel

- ☐ yes ☒ no

lightning

- ☐ yes ☒ no

river bank construction

- ☐ sheet pile wall
- ☐ embankment (slope)
- ☐ quay walls
- ☐ dam
- ☐ dolphins
- ☒ pontoon
- ☐ natural (wild)

specimen widths

- ☐ 1 beam
- ☐ 2 beams
- ☐ 3 beams
- ☒ three ship breadths, 38m

connections

ports/harbours in the surrounding area

- ☒ > 30km Sturovo Port, downstream

villages, cities in the surrounding area

- ☒ < 5 km Komarno

access road

- ☒ yes ☐ no

maintenance and disposal facilities

electricity supply

- ☐ yes ☒ no

fresh water supply

- ☐ yes ☒ no

waste disposal

- ☐ yes ☒ no

petrol station

- ☐ yes ☒ no

safety in case of flood or storm

- ☐ yes ☒ no

Parking fees/costs

- ☐ yes ☒ no





Komarno Port - kontrola SOD - poloha HTD 26

Danube km: 1767.2 - 1767.36

GPS coordinates:

North: 47° 45' 8.16"

East: 18° 7' 40.99"

berths information

length: 160 m

river bank

- ☒ L left river bank
- ☐ R right river bank
- ☐ T at the dam

location

- ☐ DPP "downstream" side of a power plant
- ☐ DL "downstream" side of a lock (lock entrance area)
- ☐ UL "upstream" side of a lock (lock entrance area)
- ☐ UPP "upstream" side of a power plant
- ☐ ARS along the river stretch
- ☒ OTHothers (before a harbour entrance in an old river branch)

local berths conditions

- ☐ 0 berthing permitted (i.e. anchoring or making fast to the bank)
- ☐ 1 berthing area reserved for pushing-navigation vessels that are required to carry one blue cone
- ☐ 2 berthing area reserved for pushing-navigation vessels that are required to carry two blue cones
- ☐ 3 berthing area reserved for pushing-navigation vessels that are required to carry three blue cones
- ☒ OTHother restrictions (only for small motor crafts, only for border control, only for damaged vessels after an accident, max. time allowed for berthing, ...)

facilities

stairs to go ashore

- ☐ yes ☒ no

possibility to load and unload cars from a vessel

- ☐ yes ☒ no

lightning

- ☐ yes ☒ no

river bank construction

- ☐ sheet pile wall
- ☒ embankment (slope)
- ☐ quay walls
- ☐ dam
- ☐ dolphins
- ☐ pontoon
- ☐ natural (wild)

specimen widths

- ☐ 1 beam
- ☐ 2 beams
- ☐ 3 beams
- ☒ 50 m

connections

ports/harbours in the surrounding area

- ☒ > 30km Sturovo Port, downstream

villages, cities in the surrounding area

- ☒ < 5 km Komarno

access road

- ☒ yes ☐ no

maintenance and disposal facilities

electricity supply

- ☐ yes ☒ no

fresh water supply

- ☐ yes ☒ no

waste disposal

- ☐ yes ☒ no

petrol station

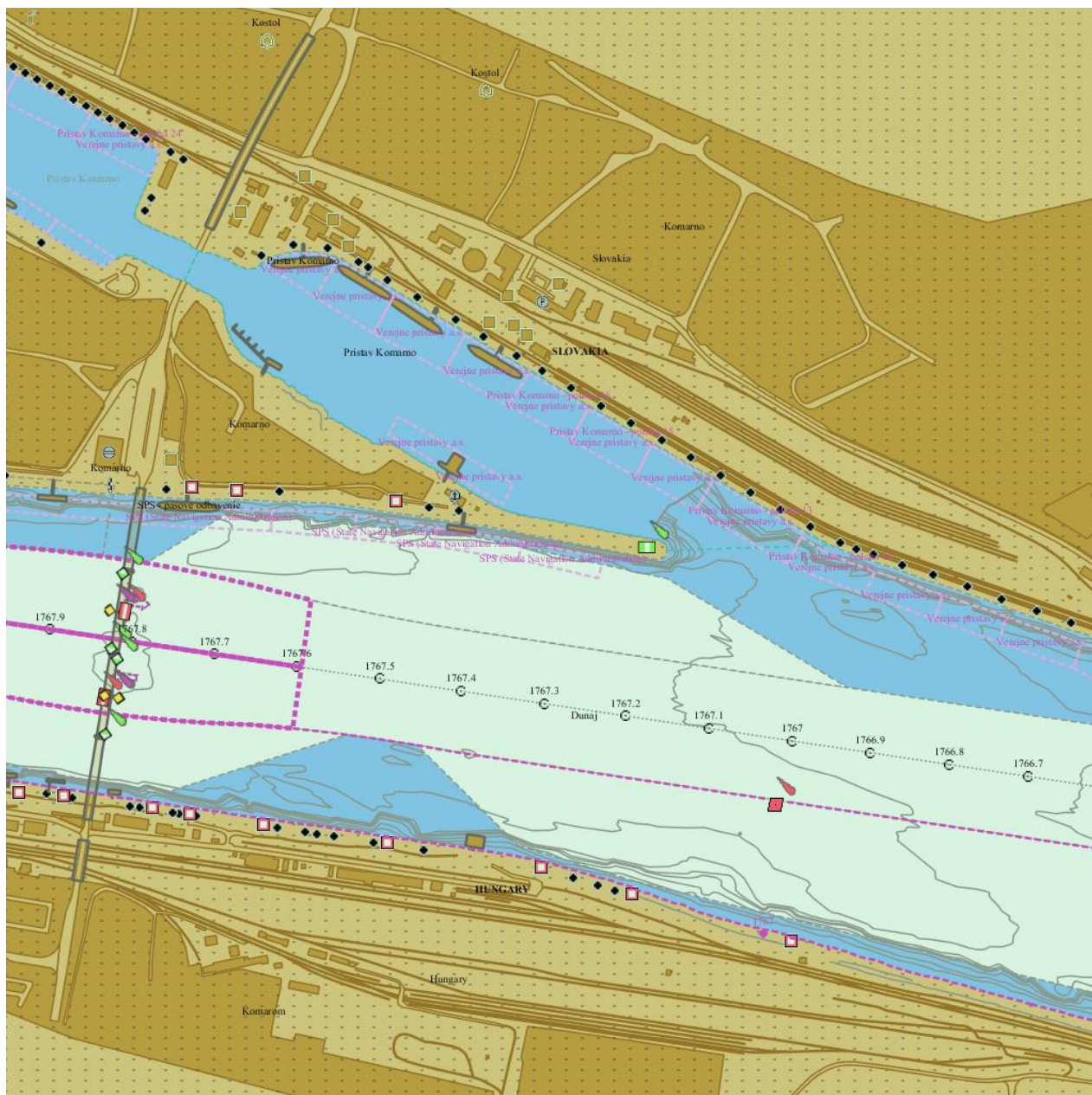
- ☐ yes ☒ no

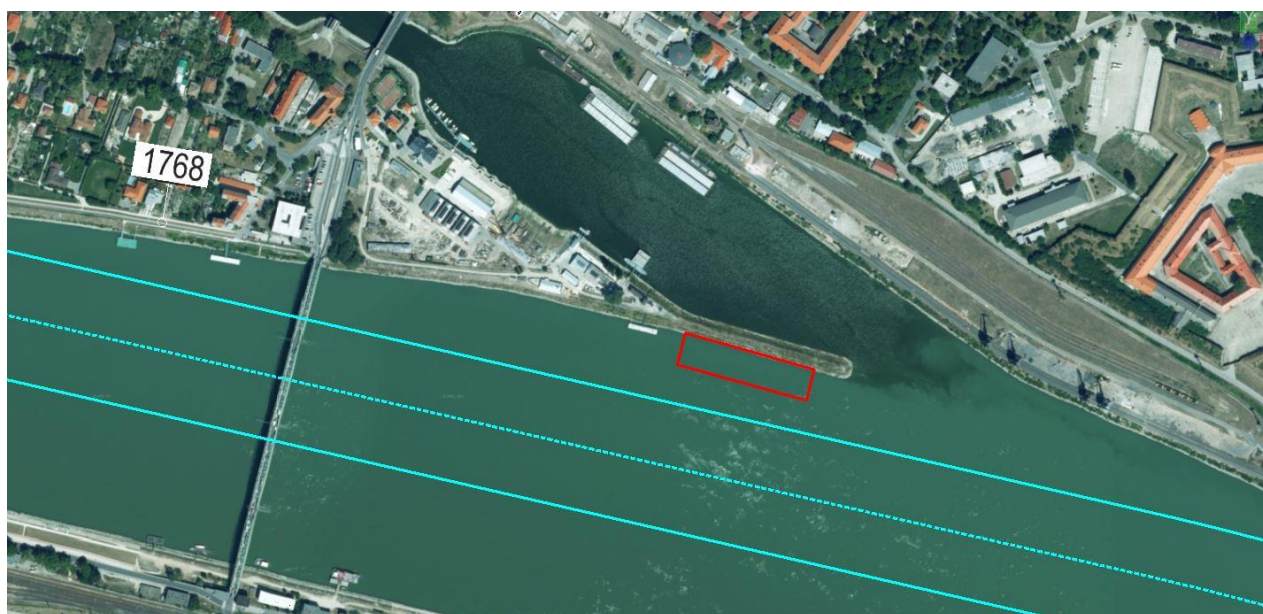
safety in case of flood or storm

- ☐ yes ☒ no

Parking fees/costs

- ☐ yes ☒ no





Komarno Port - Manipulacne polohy HTD 30-33

Danube km: 1766.74 - 1767

GPS coordinates:

North: 47° 45' 5.8"

East: 18° 8' 5.83"

berths information

length: 260 m

river bank

- ☒ L left river bank
- ☐ R right river bank
- ☐ T at the dam

location

- ☐ DPP "downstream" side of a power plant
- ☐ DL "downstream" side of a lock (lock entrance area)
- ☐ UL "upstream" side of a lock (lock entrance area)
- ☐ UPP "upstream" side of a power plant
- ☐ ARS along the river stretch
- ☒ OTHothers (before a harbour entrance in an old river branch)

local berths conditions

- ☒ 0 berthing permitted (i.e. anchoring or making fast to the bank)
- ☐ 1 berthing area reserved for pushing-navigation vessels that are required to carry one blue cone
- ☐ 2 berthing area reserved for pushing-navigation vessels that are required to carry two blue cones
- ☐ 3 berthing area reserved for pushing-navigation vessels that are required to carry three blue cones
- ☐ OTHother restrictions (only for small motor crafts, only for border control, only for damaged vessels after an accident, max. time allowed for berthing, ...)

facilities

stairs to go ashore

- ☐ yes ☒ no

possibility to load and unload cars from a vessel

- ☐ yes ☒ no

lightning

- ☐ yes ☒ no

river bank construction

- ☐ sheet pile wall
- ☒ embankment (slope)
- ☐ quay walls
- ☐ dam
- ☐ dolphins
- ☐ pontoon
- ☐ natural (wild)

specimen widths

- ☐ 1 beam
- ☐ 2 beams
- ☐ 3 beams
- ☒ one ship breadth

connections

ports/harbours in the surrounding area

- ☒ > 30km Sturovo Port, downstream

villages, cities in the surrounding area

- ☒ < 5 km Komarno

access road

- ☐ yes ☒ no

maintenance and disposal facilities

electricity supply

- ☐ yes ☒ no

fresh water supply

- ☐ yes ☒ no

waste disposal

- ☐ yes ☒ no

petrol station

- ☐ yes ☒ no

safety in case of flood or storm

- ☐ yes ☒ no

Parking fees/costs

- ☐ yes ☒ no

Komarno Port - Manipulacna poloha HTD 34

Danube km: 1766.65 - 1766.74

GPS coordinates:

North: 47° 45' 3.78"

East: 18° 8' 14.36"

berths information

length: 90 m

river bank

- ☒ L left river bank
- ☐ R right river bank
- ☐ T at the dam

location

- ☐ DPP "downstream" side of a power plant
- ☐ DL "downstream" side of a lock (lock entrance area)
- ☐ UL "upstream" side of a lock (lock entrance area)
- ☐ UPP "upstream" side of a power plant
- ☐ ARS along the river stretch
- ☒ OTHothers (before a harbour entrance in an old river branch)

local berths conditions

- ☒ 0 berthing permitted (i.e. anchoring or making fast to the bank)
- ☐ 1 berthing area reserved for pushing-navigation vessels that are required to carry one blue cone
- ☐ 2 berthing area reserved for pushing-navigation vessels that are required to carry two blue cones
- ☐ 3 berthing area reserved for pushing-navigation vessels that are required to carry three blue cones
- ☐ OTHother restrictions (only for small motor crafts, only for border control, only for damaged vessels after an accident, max. time allowed for berthing, ...)

facilities

stairs to go ashore

- ☐ yes ☒ no

possibility to load and unload cars from a vessel

- ☐ yes ☒ no

lightning

- ☐ yes ☒ no

river bank construction

- ☐ sheet pile wall
- ☒ embankment (slope)
- ☐ quay walls
- ☐ dam
- ☐ dolphins
- ☐ pontoon
- ☐ natural (wild)

specimen widths

- ☐ 1 beam
- ☐ 2 beams
- ☐ 3 beams
- ☒ three ship breadths, 38m

connections

ports/harbours in the surrounding area

- ☒ > 30km Sturovo Port, downstream

villages, cities in the surrounding area

- ☒ < 5 km Komarno

access road

- ☐ yes ☒ no

maintenance and disposal facilities

electricity supply

- ☐ yes ☒ no

fresh water supply

- ☐ yes ☒ no

waste disposal

- ☐ yes ☒ no

petrol station

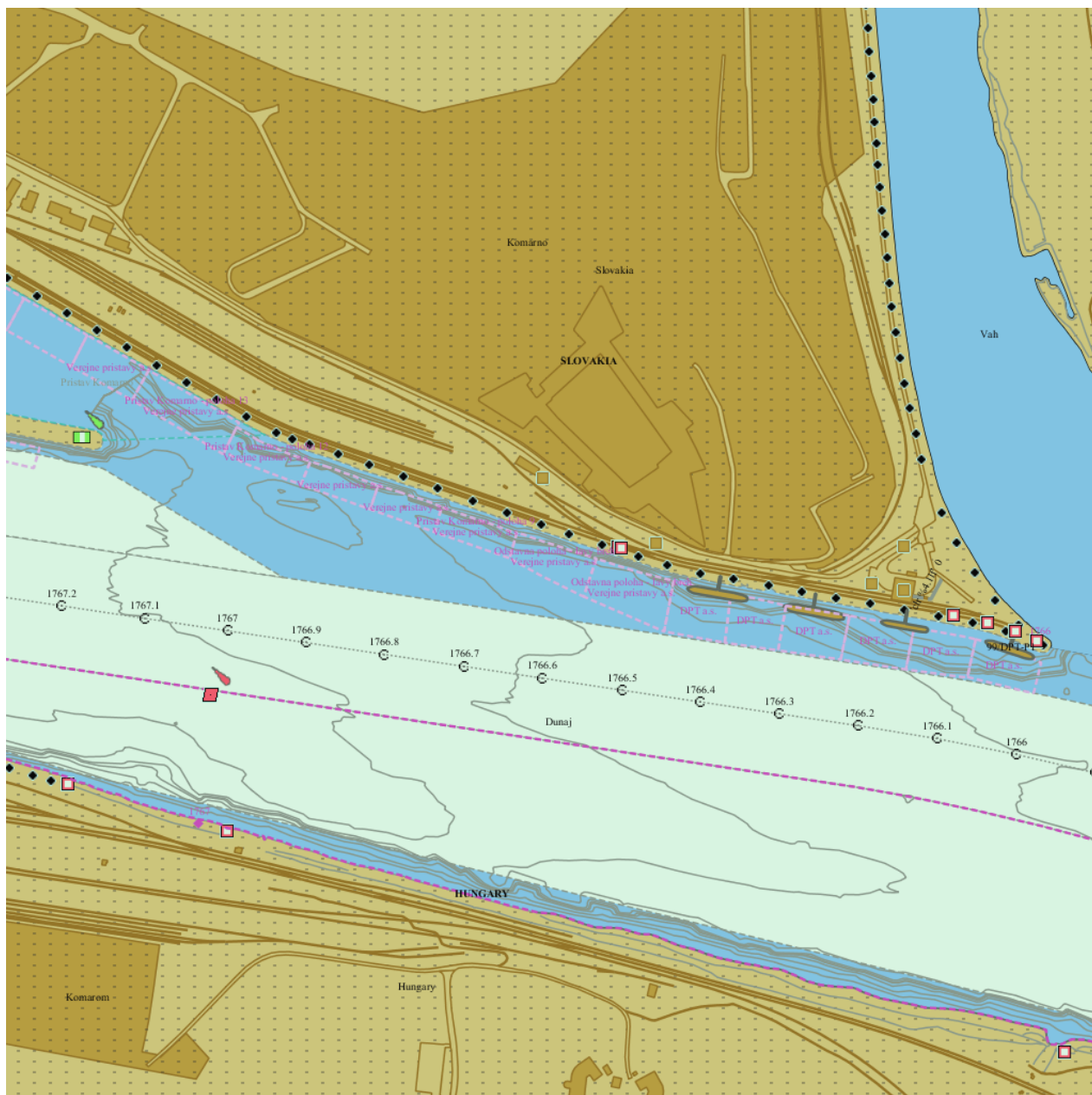
- ☐ yes ☒ no

safety in case of flood or storm

- ☐ yes ☒ no

Parking fees/costs

- ☐ yes ☒ no





Komarno Port - Odstavna poloha HTD 35

Danube km: 1766.5 - 1766.6

GPS coordinates:

North: 47° 45' 2.76"

East: 18° 8' 18.5"

berths information

length: 100 m

river bank

- ☒ L left river bank
- ☐ R right river bank
- ☐ T at the dam

location

- ☐ DPP "downstream" side of a power plant
- ☐ DL "downstream" side of a lock (lock entrance area)
- ☐ UL "upstream" side of a lock (lock entrance area)
- ☐ UPP "upstream" side of a power plant
- ☐ ARS along the river stretch
- ☒ OTHothers (before a harbour entrance in an old river branch)

local berths conditions

- ☐ 0 berthing permitted (i.e. anchoring or making fast to the bank)
- ☒ 1 berthing area reserved for pushing-navigation vessels that are required to carry one blue cone
- ☐ 2 berthing area reserved for pushing-navigation vessels that are required to carry two blue cones
- ☐ 3 berthing area reserved for pushing-navigation vessels that are required to carry three blue cones
- ☐ OTHother restrictions (only for small motor crafts, only for border control, only for damaged vessels after an accident, max. time allowed for berthing, ...)

facilities

stairs to go ashore

- ☐ yes ☒ no

possibility to load and unload cars from a vessel

- ☐ yes ☒ no

lightning

- ☐ yes ☒ no

river bank construction

- ☐ sheet pile wall
- ☒ embankment (slope)
- ☐ quay walls
- ☐ dam
- ☐ dolphins
- ☐ pontoon
- ☐ natural (wild)

specimen widths

- ☐ 1 beam
- ☐ 2 beams
- ☐ 3 beams
- ☒ three ship breadths, 38m

connections

ports/harbours in the surrounding area

- ☒ > 30km Sturovo Port, downstream
- ☒ < 5 km

villages, cities in the surrounding area

- ☒ < 5 km Komarno

access road

- ☐ yes ☒ no

maintenance and disposal facilities

electricity supply

- ☐ yes ☒ no

fresh water supply

- ☐ yes ☒ no

waste disposal

- ☐ yes ☒ no

petrol station

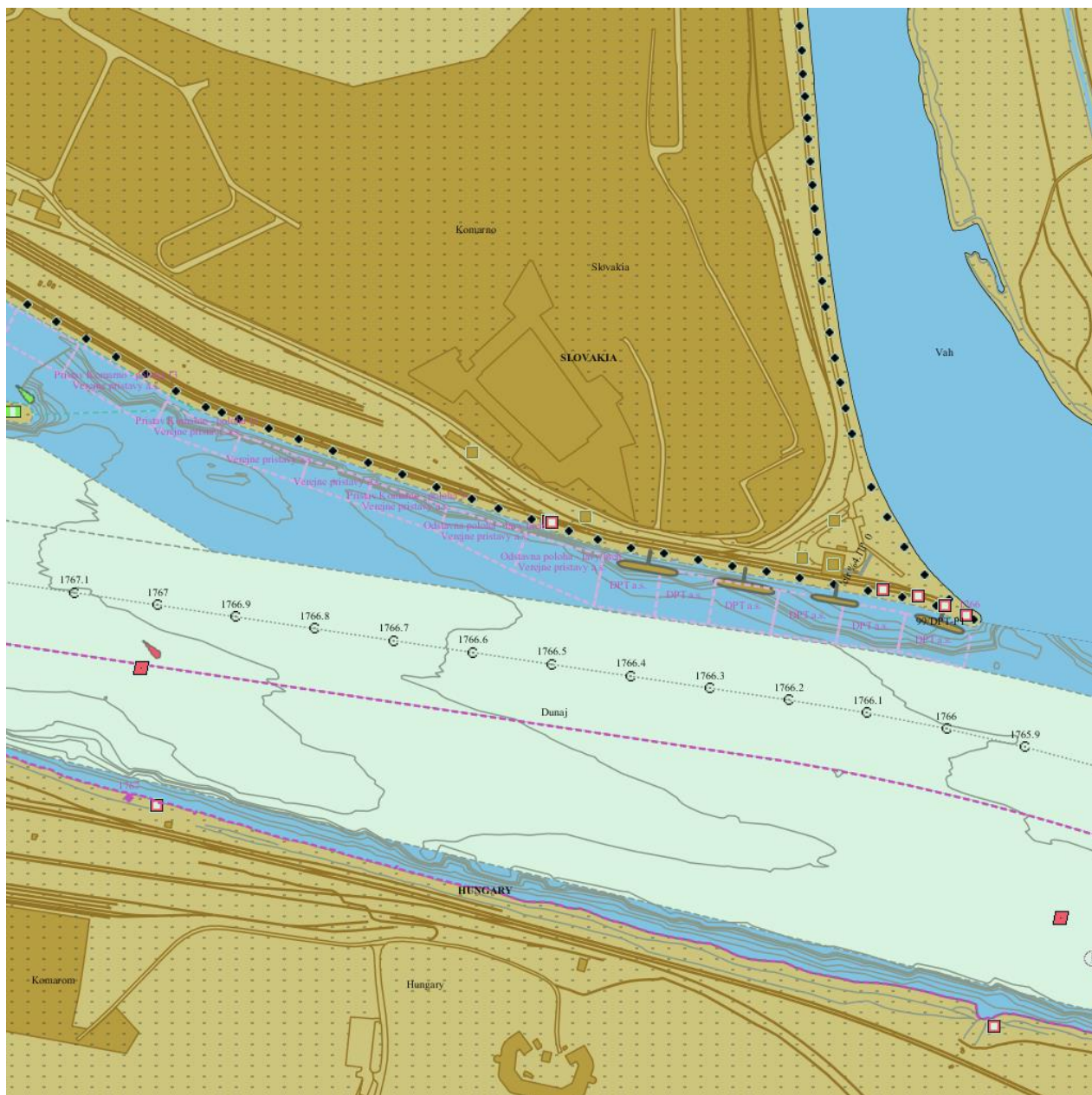
- ☐ yes ☒ no

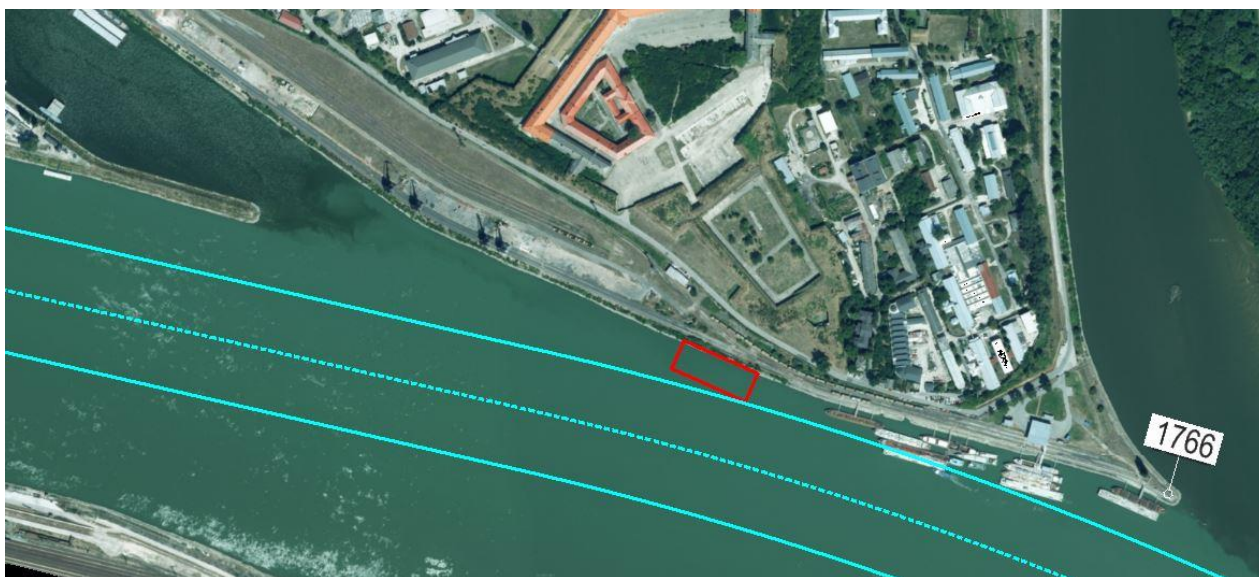
safety in case of flood or storm

- ☐ yes ☒ no

Parking fees/costs

- ☐ yes ☒ no





Komarino Port - Manipulacne polohy HTD 36-39

Danube km: 1766 - 1766.5

GPS coordinates:

North: 47° 44' 59.55"

East: 18° 8' 41.04"

berths information

length: 500 m

river bank

- ☒ L left river bank
- ☐ R right river bank
- ☐ T at the dam

location

- ☐ DPP "downstream" side of a power plant
- ☐ DL "downstream" side of a lock (lock entrance area)
- ☐ UL "upstream" side of a lock (lock entrance area)
- ☐ UPP "upstream" side of a power plant
- ☐ ARS along the river stretch
- ☒ OTHothers (before a harbour entrance in an old river branch)

local berths conditions

- ☐ 0 berthing permitted (i.e. anchoring or making fast to the bank)
- ☒ 1 berthing area reserved for pushing-navigation vessels that are required to carry one blue cone
- ☐ 2 berthing area reserved for pushing-navigation vessels that are required to carry two blue cones
- ☐ 3 berthing area reserved for pushing-navigation vessels that are required to carry three blue cones
- ☐ OTHother restrictions (only for small motor crafts, only for border control, only for damaged vessels after an accident, max. time allowed for berthing, ...)

facilities

stairs to go ashore

- | | |
|------------------------------|----------------------------------------|
| <input type="checkbox"/> yes | <input checked="" type="checkbox"/> no |
|------------------------------|----------------------------------------|

possibility to load and unload cars from a vessel

- | | |
|------------------------------|----------------------------------------|
| <input type="checkbox"/> yes | <input checked="" type="checkbox"/> no |
|------------------------------|----------------------------------------|

lightning

- | | |
|------------------------------|----------------------------------------|
| <input type="checkbox"/> yes | <input checked="" type="checkbox"/> no |
|------------------------------|----------------------------------------|

river bank construction

- ☐ sheet pile wall
- ☒ embankment (slope)
- ☐ quay walls
- ☐ dam
- ☐ dolphins
- ☐ pontoon
- ☐ natural (wild)

specimen widths

- ☐ 1 beam
- ☐ 2 beams
- ☐ 3 beams
- ☒ three ship breadths, 38m

connections

ports/harbours in the surrounding area

- ☒ > 30km Sturovo Port, downstream

villages, cities in the surrounding area

- ☒ < 5 km Komarno

access road

- | | |
|------------------------------|----------------------------------------|
| <input type="checkbox"/> yes | <input checked="" type="checkbox"/> no |
|------------------------------|----------------------------------------|

maintenance and disposal facilities

electricity supply

- | | |
|------------------------------|----------------------------------------|
| <input type="checkbox"/> yes | <input checked="" type="checkbox"/> no |
|------------------------------|----------------------------------------|

fresh water supply

- | | |
|------------------------------|----------------------------------------|
| <input type="checkbox"/> yes | <input checked="" type="checkbox"/> no |
|------------------------------|----------------------------------------|

waste disposal

- | | |
|------------------------------|----------------------------------------|
| <input type="checkbox"/> yes | <input checked="" type="checkbox"/> no |
|------------------------------|----------------------------------------|

petrol station

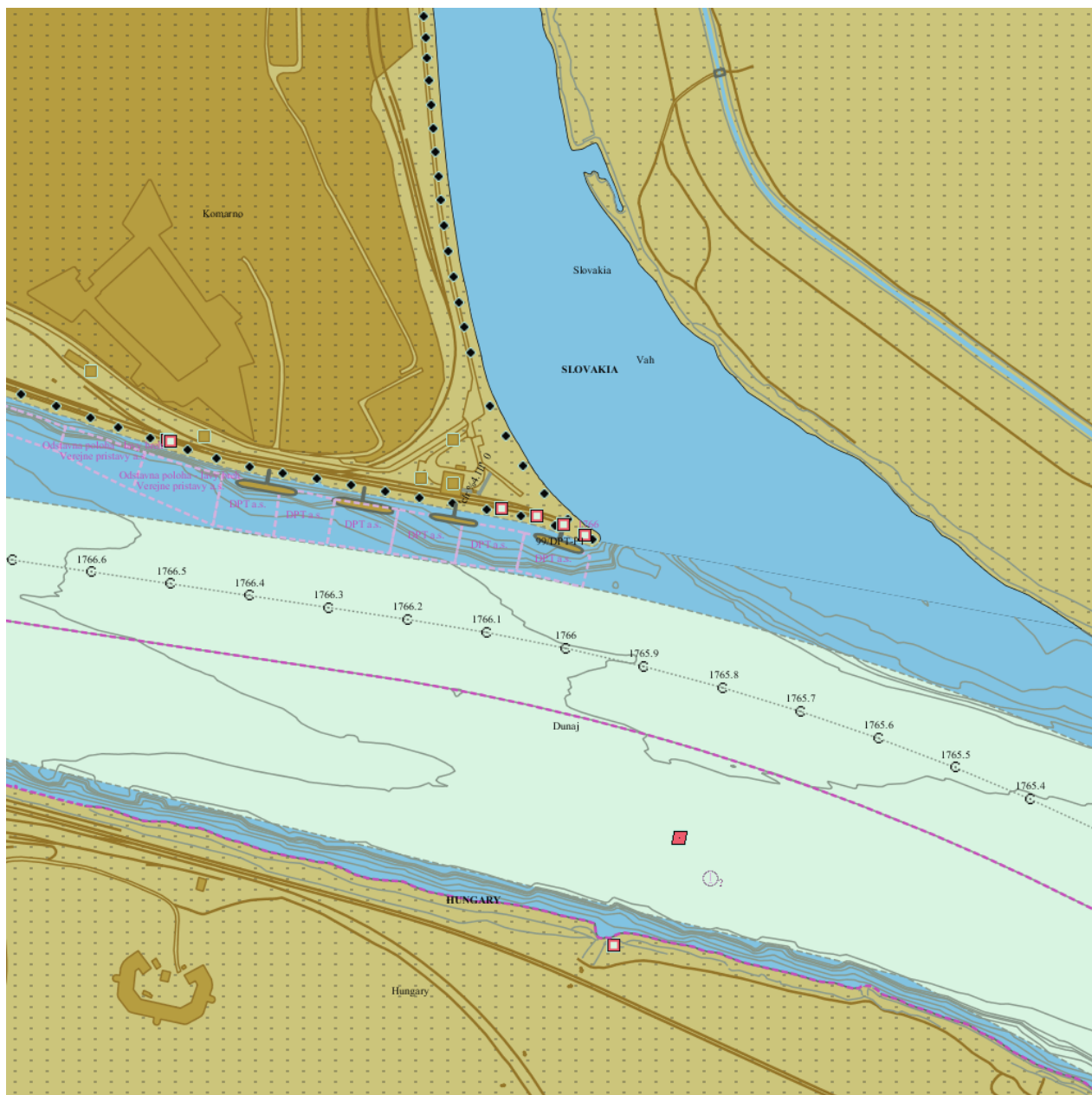
- | | |
|------------------------------|----------------------------------------|
| <input type="checkbox"/> yes | <input checked="" type="checkbox"/> no |
|------------------------------|----------------------------------------|

safety in case of flood or storm

- | | |
|------------------------------|----------------------------------------|
| <input type="checkbox"/> yes | <input checked="" type="checkbox"/> no |
|------------------------------|----------------------------------------|

Parking fees/costs

- | | |
|------------------------------|----------------------------------------|
| <input type="checkbox"/> yes | <input checked="" type="checkbox"/> no |
|------------------------------|----------------------------------------|





Sturovo Port - pristavisko pre male plavidla OPST 1

Danube km: 1718.76 - 1718.79

GPS coordinates:

North: 47° 47' 45.71"

East: 18° 43' 37.95"

berths information

length: 30 m

river bank

- ☒ L left river bank
☐ R right river bank
☐ T at the dam

location

- ☐ DPP "downstream" side of a power plant
☐ DL "downstream" side of a lock (lock entrance area)
☐ UL "upstream" side of a lock (lock entrance area)
☐ UPP "upstream" side of a power plant
☒ ARS along the river stretch
☐ OTHothers (before a harbour entrance in an old river branch)

local berths conditions

- ☐ 0 berthing permitted (i.e. anchoring or making fast to the bank)
☐ 1 berthing area reserved for pushing-navigation vessels that are required to carry one blue cone
☐ 2 berthing area reserved for pushing-navigation vessels that are required to carry two blue cones
☐ 3 berthing area reserved for pushing-navigation vessels that are required to carry three blue cones
☒ OTHother restrictions (only for small motor crafts, only for border control, only for damaged vessels after an accident, max. time allowed for berthing, ...)

facilities

stairs to go ashore

- ☐ yes ☒ no

possibility to load and unload cars from a vessel

- ☐ yes ☒ no

lightning

- ☐ yes ☒ no

river bank construction

- ☐ sheet pile wall
☐ embankment (slope)
☐ quay walls
☐ dam
☐ dolphins
☒ pontoon
☐ natural (wild)

specimen widths

- ☐ 1 beam
☐ 2 beams
☐ 3 beams
☒ 10m

connections

ports/harbours in the surrounding area

- ☒ > 30km Komarno Port, upstream

villages, cities in the surrounding area

- ☒ < 5 km Sturovo

access road

- ☒ yes ☐ no

maintenance and disposal facilities

electricity supply

- ☐ yes ☒ no

fresh water supply

- ☐ yes ☒ no

waste disposal

- ☐ yes ☒ no

petrol station

- ☐ yes ☒ no

safety in case of flood or storm

- ☐ yes ☒ no

Parking fees/costs

- ☐ yes ☒ no





Sturovo Port - pristavisko pre colnu spravu OPST 2

Danube km: 1718.73 - 1718.75

GPS coordinates:

North: 47° 47' 48.34"

East: 18° 43' 38.57"

berths information

length: 20 m

river bank

- ☒ L left river bank
☐ R right river bank
☐ T at the dam

location

- ☐ DPP "downstream" side of a power plant
☐ DL "downstream" side of a lock (lock entrance area)
☐ UL "upstream" side of a lock (lock entrance area)
☐ UPP "upstream" side of a power plant
☒ ARS along the river stretch
☐ OTHothers (before a harbour entrance in an old river branch)

local berths conditions

- ☐ 0 berthing permitted (i.e. anchoring or making fast to the bank)
☐ 1 berthing area reserved for pushing-navigation vessels that are required to carry one blue cone
☐ 2 berthing area reserved for pushing-navigation vessels that are required to carry two blue cones
☐ 3 berthing area reserved for pushing-navigation vessels that are required to carry three blue cones
☒ OTHother restrictions (only for small motor crafts, only for border control, only for damaged vessels after an accident, max. time allowed for berthing, ...)

facilities

stairs to go ashore

- ☐ yes ☒ no

possibility to load and unload cars from a vessel

- ☐ yes ☒ no

lightning

- ☐ yes ☒ no

river bank construction

- ☐ sheet pile wall
☐ embankment (slope)
☐ quay walls
☐ dam
☐ dolphins
☒ pontoon
☐ natural (wild)

specimen widths

- ☐ 1 beam
☐ 2 beams
☐ 3 beams
☒ 10m

connections

ports/harbours in the surrounding area

- ☒ > 30km Komarno Port, upstream

villages, cities in the surrounding area

- ☒ < 5 km Sturovo

access road

- ☒ yes ☐ no

maintenance and disposal facilities

electricity supply

- ☐ yes ☒ no

fresh water supply

- ☐ yes ☒ no

waste disposal

- ☐ yes ☒ no

petrol station

- ☐ yes ☒ no

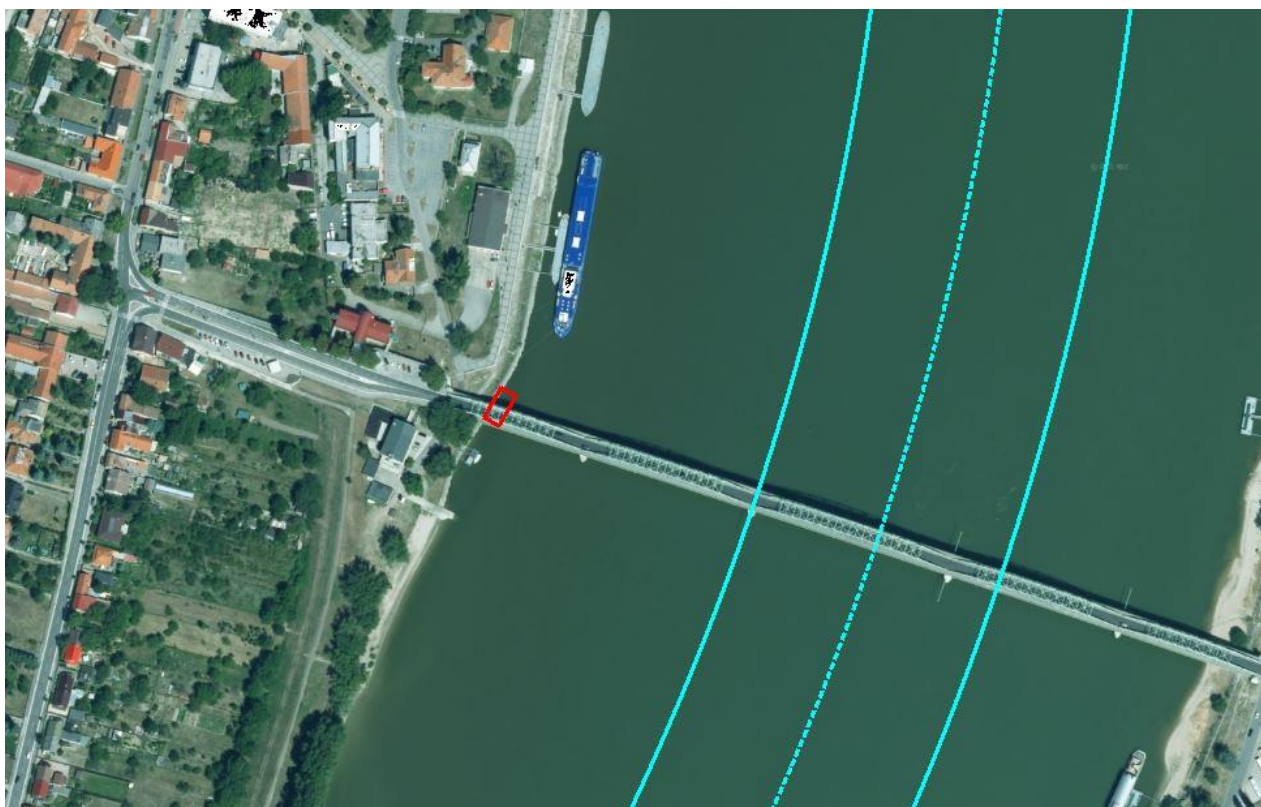
safety in case of flood or storm

- ☐ yes ☒ no

Parking fees/costs

- ☐ yes ☒ no





Sturovo Port - prístavisko osobných lodí OPST 3-4

Danube km: 1718.45 - 1718.68

GPS coordinates:

North: 47° 47' 52.28"

East: 18° 43' 39.42"

berths information

length: 230 m

river bank

- ☒ L left river bank
☐ R right river bank
☐ T at the dam

location

- ☐ DPP "downstream" side of a power plant
☐ DL "downstream" side of a lock (lock entrance area)
☐ UL "upstream" side of a lock (lock entrance area)
☐ UPP "upstream" side of a power plant
☒ ARS along the river stretch
☐ OTHothers (before a harbour entrance in an old river branch)

local berths conditions

- ☒ 0 berthing permitted (i.e. anchoring or making fast to the bank)
☐ 1 berthing area reserved for pushing-navigation vessels that are required to carry one blue cone
☐ 2 berthing area reserved for pushing-navigation vessels that are required to carry two blue cones
☐ 3 berthing area reserved for pushing-navigation vessels that are required to carry three blue cones
☐ OTHother restrictions (only for small motor crafts, only for border control, only for damaged vessels after an accident, max. time allowed for berthing, ...)

facilities

stairs to go ashore

- ☐ yes ☒ no

possibility to load and unload cars from a vessel

- ☐ yes ☒ no

lightning

- ☐ yes ☒ no

river bank construction

- ☐ sheet pile wall
☐ embankment (slope)
☐ quay walls
☐ dam
☐ dolphins
☒ pontoon
☐ natural (wild)

specimen widths

- ☐ 1 beam
☐ 2 beams
☐ 3 beams
☒ three ship breadths, max.38m

connections

ports/harbours in the surrounding area

- ☒ > 30km Komarno Port, upstream

villages, cities in the surrounding area

- ☒ < 5 km Sturovo

access road

- ☒ yes ☐ no

maintenance and disposal facilities

electricity supply

- ☐ yes ☒ no

fresh water supply

- ☐ yes ☒ no

waste disposal

- ☐ yes ☒ no

petrol station

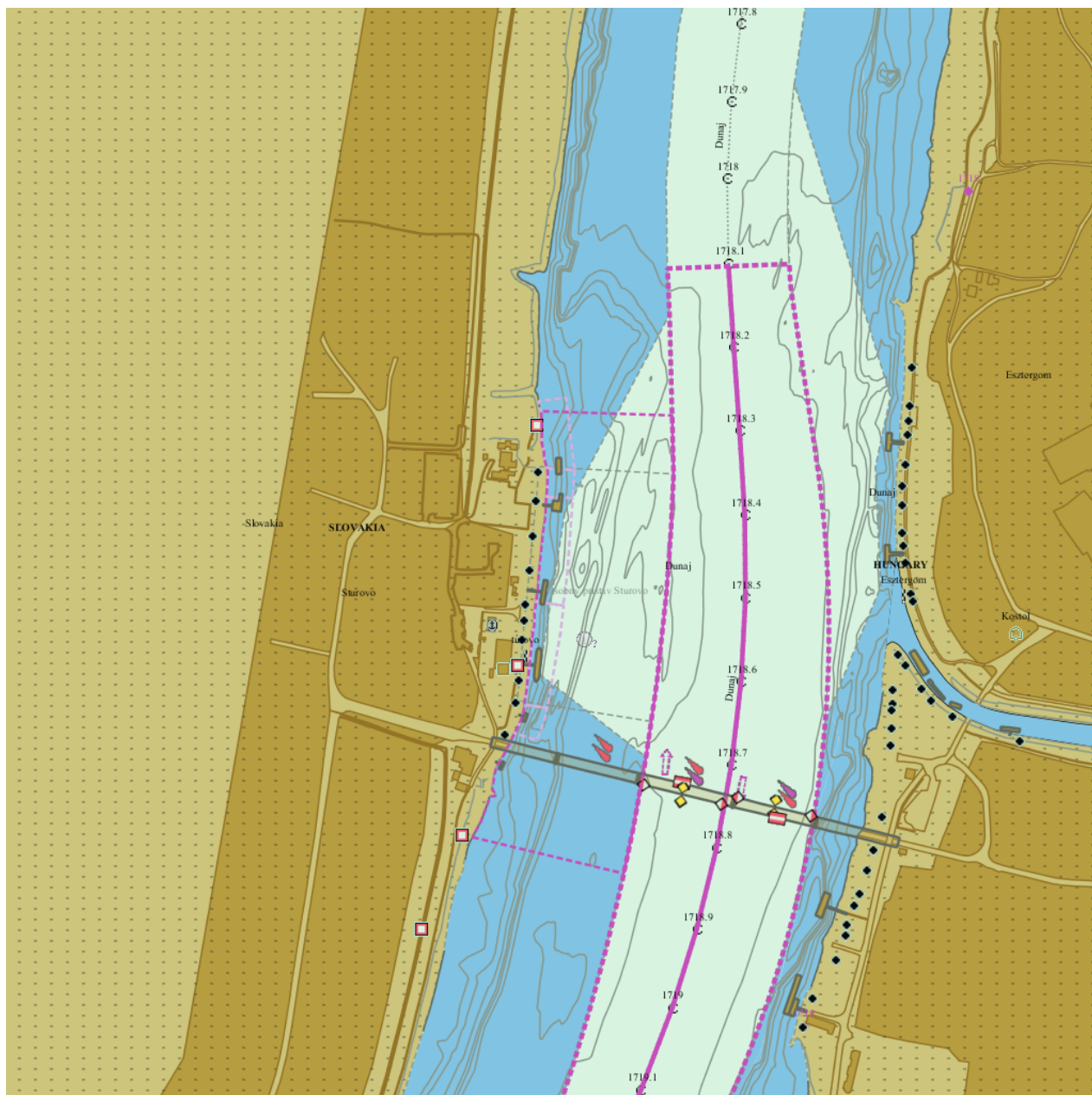
- ☐ yes ☒ no

safety in case of flood or storm

- ☐ yes ☒ no

Parking fees/costs

- ☐ yes ☒ no





Sturovo Port - prístavisko osobných lodí OPST 5

Danube km: 1718.37 - 1718.44

GPS coordinates:

North: 47° 47' 54.99"

East: 18° 43' 39.59"

berths information

length: 70 m

river bank

- ☒ L left river bank
- ☐ R right river bank
- ☐ T at the dam

location

- ☐ DPP "downstream" side of a power plant
- ☐ DL "downstream" side of a lock (lock entrance area)
- ☐ UL "upstream" side of a lock (lock entrance area)
- ☐ UPP "upstream" side of a power plant
- ☒ ARS along the river stretch
- ☐ OTHothers (before a harbour entrance in an old river branch)

local berths conditions

- ☒ 0 berthing permitted (i.e. anchoring or making fast to the bank)
- ☐ 1 berthing area reserved for pushing-navigation vessels that are required to carry one blue cone
- ☐ 2 berthing area reserved for pushing-navigation vessels that are required to carry two blue cones
- ☐ 3 berthing area reserved for pushing-navigation vessels that are required to carry three blue cones
- ☐ OTHother restrictions (only for small motor crafts, only for border control, only for damaged vessels after an accident, max. time allowed for berthing, ...)

facilities

stairs to go ashore

- ☐ yes ☒ no

possibility to load and unload cars from a vessel

- ☐ yes ☒ no

lightning

- ☐ yes ☒ no

river bank construction

- ☐ sheet pile wall
- ☐ embankment (slope)
- ☐ quay walls
- ☐ dam
- ☐ dolphins
- ☒ pontoon
- ☐ natural (wild)

specimen widths

- ☐ 1 beam
- ☐ 2 beams
- ☐ 3 beams
- ☒ two ship breadths, 24m

connections

ports/harbours in the surrounding area

- ☒ > 30km Komarno Port, upstream

villages, cities in the surrounding area

- ☒ < 5 km Sturovo

access road

- ☒ yes ☐ no

maintenance and disposal facilities

electricity supply

- ☐ yes ☒ no

fresh water supply

- ☐ yes ☒ no

waste disposal

- ☐ yes ☒ no

petrol station

- ☐ yes ☒ no

safety in case of flood or storm

- ☐ yes ☒ no

Parking fees/costs

- ☐ yes ☒ no



Sturovo Port - prístavisko osobných lodí OPST 6

Danube km: 1718.3 - 1718.36

GPS coordinates:

North: 47° 47' 56.89"

East: 18° 43' 39.02"

berths information

length: 60 m

river bank

- ☒ L left river bank
☐ R right river bank
☐ T at the dam

location

- ☐ DPP "downstream" side of a power plant
☐ DL "downstream" side of a lock (lock entrance area)
☐ UL "upstream" side of a lock (lock entrance area)
☐ UPP "upstream" side of a power plant
☒ ARS along the river stretch
☐ OTHothers (before a harbour entrance in an old river branch)

local berths conditions

- ☒ 0 berthing permitted (i.e. anchoring or making fast to the bank)
☐ 1 berthing area reserved for pushing-navigation vessels that are required to carry one blue cone
☐ 2 berthing area reserved for pushing-navigation vessels that are required to carry two blue cones
☐ 3 berthing area reserved for pushing-navigation vessels that are required to carry three blue cones
☐ OTHother restrictions (only for small motor crafts, only for border control, only for damaged vessels after an accident, max. time allowed for berthing, ...)

facilities

stairs to go ashore

- ☐ yes ☒ no

possibility to load and unload cars from a vessel

- ☐ yes ☒ no

lightning

- ☐ yes ☒ no

river bank construction

- ☐ sheet pile wall
☐ embankment (slope)
☐ quay walls
☐ dam
☐ dolphins
☒ pontoon
☐ natural (wild)

specimen widths

- ☐ 1 beam
☐ 2 beams
☐ 3 beams
☒ two ship breadths, 24m

connections

ports/harbours in the surrounding area

- ☒ > 30km Komarno Port, upstream

villages, cities in the surrounding area

- ☒ < 5 km Sturovo

access road

- ☒ yes ☐ no

maintenance and disposal facilities

electricity supply

- ☐ yes ☒ no

fresh water supply

- ☐ yes ☒ no

waste disposal

- ☐ yes ☒ no

petrol station

- ☐ yes ☒ no

safety in case of flood or storm

- ☐ yes ☒ no

Parking fees/costs

- ☐ yes ☒ no





Gabcikovo - Horna rejska pravej plavebnej komory

Danube km: 9.1 - 9.2

GPS coordinates:

North: 47° 53' 10"

East: 17° 32' 5"

berths information

length: 100 m

river bank

- ☐ L left river bank
☒ R right river bank
☐ T at the dam

location

- ☐ DPP "downstream" side of a power plant
☐ DL "downstream" side of a lock (lock entrance area)
☒ UL "upstream" side of a lock (lock entrance area)
☐ UPP "upstream" side of a power plant
☐ ARS along the river stretch
☐ OTHothers (before a harbour entrance in an old river branch)

local berths conditions

- ☒ 0 berthing permitted (i.e. anchoring or making fast to the bank)
☐ 1 berthing area reserved for pushing-navigation vessels that are required to carry one blue cone
☐ 2 berthing area reserved for pushing-navigation vessels that are required to carry two blue cones
☐ 3 berthing area reserved for pushing-navigation vessels that are required to carry three blue cones
☐ OTHother restrictions (only for small motor crafts, only for border control, only for damaged vessels after an accident, max. time allowed for berthing, ...)

facilities

stairs to go ashore

- ☐ yes ☒ no

possibility to load and unload cars from a vessel

- ☐ yes ☒ no

lightning

- ☐ yes ☒ no

river bank construction

- ☐ sheet pile wall
☐ embankment (slope)
☒ quay walls
☐ dam
☐ dolphins
☐ pontoon
☐ natural (wild)

specimen widths

- ☐ 1 beam
☐ 2 beams
☐ 3 beams

connections

ports/harbours in the surrounding area
none

villages, cities in the surrounding area
none

access road

- ☐ yes ☒ no

maintenance and disposal facilities

electricity supply

- ☐ yes ☒ no

fresh water supply

- ☐ yes ☒ no

waste disposal

- ☐ yes ☒ no

petrol station

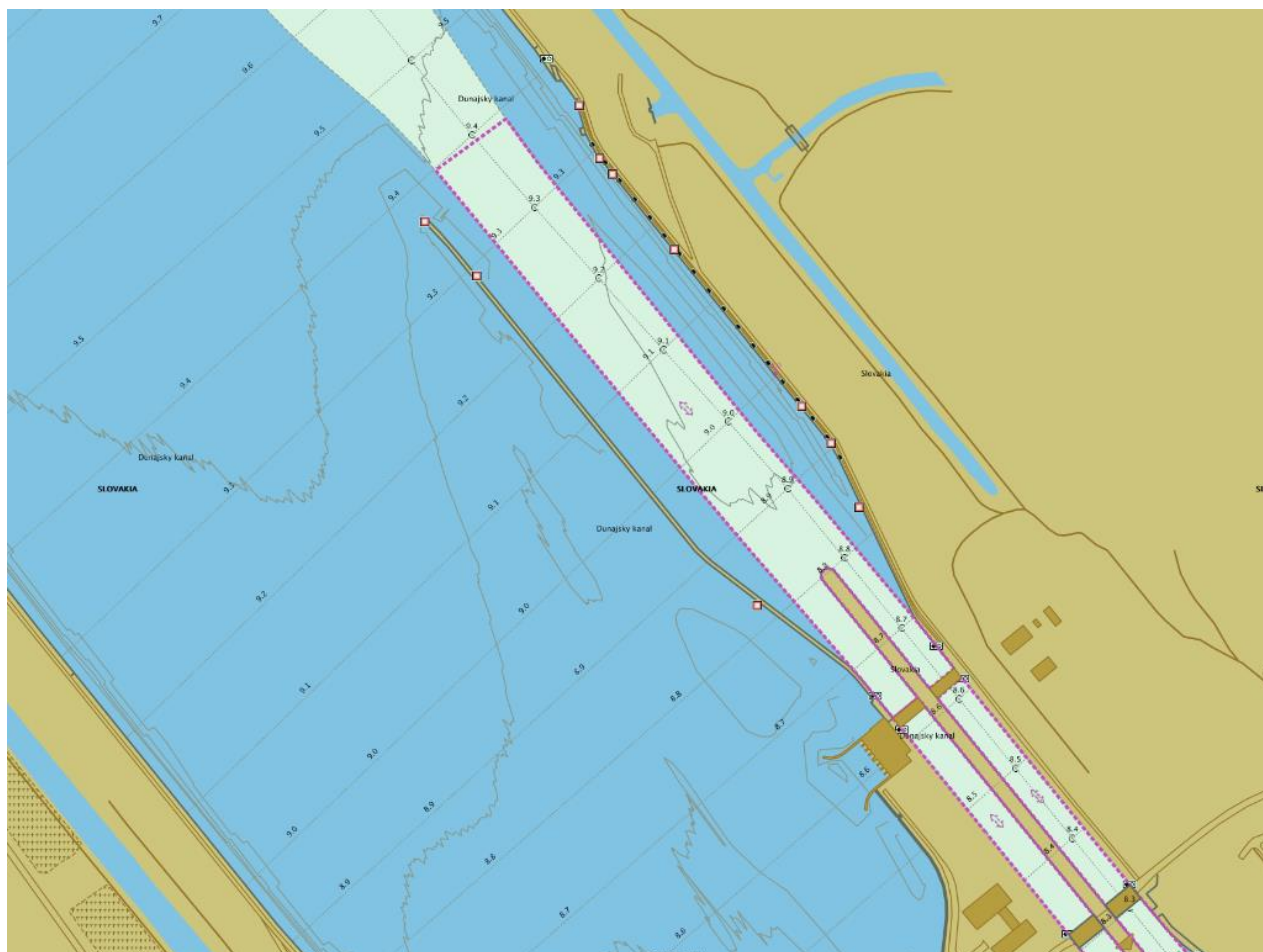
- ☐ yes ☒ no

safety in case of flood or storm

- ☐ yes ☒ no

Parking fees/costs

- ☐ yes ☒ no



Gabcikovo - Horna rejska lavenj plavebnej komory

Danube km: 9.1 - 9.2

GPS coordinates:

North: 47° 53' 13"

East: 17° 32' 12"

berths information

length: 100 m

river bank

- ☒ L left river bank
☐ R right river bank
☐ T at the dam

location

- ☐ DPP "downstream" side of a power plant
☐ DL "downstream" side of a lock (lock entrance area)
☒ UL "upstream" side of a lock (lock entrance area)
☐ UPP "upstream" side of a power plant
☐ ARS along the river stretch
☐ OTHothers (before a harbour entrance in an old river branch)

local berths conditions

- ☒ 0 berthing permitted (i.e. anchoring or making fast to the bank)
☐ 1 berthing area reserved for pushing-navigation vessels that are required to carry one blue cone
☐ 2 berthing area reserved for pushing-navigation vessels that are required to carry two blue cones
☐ 3 berthing area reserved for pushing-navigation vessels that are required to carry three blue cones
☐ OTHother restrictions (only for small motor crafts, only for border control, only for damaged vessels after an accident, max. time allowed for berthing, ...)

facilities

stairs to go ashore

- ☐ yes ☒ no

possibility to load and unload cars from a vessel

- ☐ yes ☒ no

lightning

- ☐ yes ☒ no

river bank construction

- ☐ sheet pile wall
☐ embankment (slope)
☒ quay walls
☐ dam
☐ dolphins
☐ pontoon
☐ natural (wild)

specimen widths

- ☐ 1 beam
☐ 2 beams
☐ 3 beams

connections

ports/harbours in the surrounding area
none

villages, cities in the surrounding area
none

access road

- ☐ yes ☒ no

maintenance and disposal facilities

electricity supply

- ☐ yes ☒ no

fresh water supply

- ☐ yes ☒ no

waste disposal

- ☐ yes ☒ no

petrol station

- ☐ yes ☒ no

safety in case of flood or storm

- ☐ yes ☒ no

Parking fees/costs

- ☐ yes ☒ no

Gabcikovo - Dolna rejska lavenj plavebnej komory

Danube km: 7.9 - 8

GPS coordinates:

North: 47° 52' 49"

East: 17° 32' 42"

berths information

length: 100 m

river bank

- ☒ L left river bank
☐ R right river bank
☐ T at the dam

location

- ☐ DPP "downstream" side of a power plant
☒ DL "downstream" side of a lock (lock entrance area)
☐ UL "upstream" side of a lock (lock entrance area)
☐ UPP "upstream" side of a power plant
☐ ARS along the river stretch
☐ OTHothers (before a harbour entrance in an old river branch)

local berths conditions

- ☒ 0 berthing permitted (i.e. anchoring or making fast to the bank)
☐ 1 berthing area reserved for pushing-navigation vessels that are required to carry one blue cone
☐ 2 berthing area reserved for pushing-navigation vessels that are required to carry two blue cones
☐ 3 berthing area reserved for pushing-navigation vessels that are required to carry three blue cones
☐ OTHother restrictions (only for small motor crafts, only for border control, only for damaged vessels after an accident, max. time allowed for berthing, ...)

facilities

stairs to go ashore

- ☐ yes ☒ no

possibility to load and unload cars from a vessel

- ☐ yes ☒ no

lightning

- ☐ yes ☒ no

river bank construction

- ☐ sheet pile wall
☐ embankment (slope)
☒ quay walls
☐ dam
☐ dolphins
☐ pontoon
☐ natural (wild)

specimen widths

- ☐ 1 beam
☐ 2 beams
☐ 3 beams

connections

ports/harbours in the surrounding area
none

villages, cities in the surrounding area
none

access road

- ☐ yes ☒ no

maintenance and disposal facilities

electricity supply

- ☐ yes ☒ no

fresh water supply

- ☐ yes ☒ no

waste disposal

- ☐ yes ☒ no

petrol station

- ☐ yes ☒ no

safety in case of flood or storm

- ☐ yes ☒ no

Parking fees/costs

- ☐ yes ☒ no



Gabcikovo - Dolna rejska pravej plavebnej komory

Danube km: 7.9 - 8

GPS coordinates:

North: 47° 52' 45"

East: 17° 32' 35"

berths information

length: 100 m

river bank

- ☐ L left river bank
☒ R right river bank
☐ T at the dam

location

- ☐ DPP "downstream" side of a power plant
☒ DL "downstream" side of a lock (lock entrance area)
☐ UL "upstream" side of a lock (lock entrance area)
☐ UPP "upstream" side of a power plant
☐ ARS along the river stretch
☐ OTHothers (before a harbour entrance in an old river branch)

local berths conditions

- ☒ 0 berthing permitted (i.e. anchoring or making fast to the bank)
☐ 1 berthing area reserved for pushing-navigation vessels that are required to carry one blue cone
☐ 2 berthing area reserved for pushing-navigation vessels that are required to carry two blue cones
☐ 3 berthing area reserved for pushing-navigation vessels that are required to carry three blue cones
☐ OTHother restrictions (only for small motor crafts, only for border control, only for damaged vessels after an accident, max. time allowed for berthing, ...)

facilities

stairs to go ashore

- ☐ yes ☒ no

possibility to load and unload cars from a vessel

- ☐ yes ☒ no

lightning

- ☐ yes ☒ no

river bank construction

- ☐ sheet pile wall
☐ embankment (slope)
☒ quay walls
☐ dam
☐ dolphins
☐ pontoon
☐ natural (wild)

specimen widths

- ☐ 1 beam
☐ 2 beams
☐ 3 beams

connections

ports/harbours in the surrounding area
none

villages, cities in the surrounding area
none

access road

- ☐ yes ☒ no

maintenance and disposal facilities

electricity supply

- ☐ yes ☒ no

fresh water supply

- ☐ yes ☒ no

waste disposal

- ☐ yes ☒ no

petrol station

- ☐ yes ☒ no

safety in case of flood or storm

- ☐ yes ☒ no

Parking fees/costs

- ☐ yes ☒ no



Pristavisko SVP Gabčíkovo - pravý breh

Danube km: 7.6 - 7.7

GPS coordinates:

North: 47° 52' 30.4"

East: 17° 32' 28.4"

berths information

length: 100 m

river bank

- ☐ L left river bank
☒ R right river bank
☐ T at the dam

location

- ☐ DPP "downstream" side of a power plant
☒ DL "downstream" side of a lock (lock entrance area)
☐ UL "upstream" side of a lock (lock entrance area)
☐ UPP "upstream" side of a power plant
☐ ARS along the river stretch
☐ OTHothers (before a harbour entrance in an old river branch)

local berths conditions

- ☐ 0 berthing permitted (i.e. anchoring or making fast to the bank)
☐ 1 berthing area reserved for pushing-navigation vessels that are required to carry one blue cone
☐ 2 berthing area reserved for pushing-navigation vessels that are required to carry two blue cones
☐ 3 berthing area reserved for pushing-navigation vessels that are required to carry three blue cones
☒ OTHother restrictions (only for small motor crafts, only for border control, only for damaged vessels after an accident, max. time allowed for berthing, ...)

facilities

stairs to go ashore

- ☐ yes ☒ no

possibility to load and unload cars from a vessel

- ☐ yes ☒ no

lightning

- ☐ yes ☒ no

river bank construction

- ☐ sheet pile wall
☐ embankment (slope)
☐ quay walls
☐ dam
☐ dolphins
☒ pontoon
☐ natural (wild)

specimen widths

- ☐ 1 beam
☐ 2 beams
☐ 3 beams

connections

ports/harbours in the surrounding area

- ☒ > 30km Komarno port, downstream

villages, cities in the surrounding area

- ☒ < 5 km Gabčíkovo

access road

- ☒ yes ☐ no

maintenance and disposal facilities

electricity supply

- ☐ yes ☒ no

fresh water supply

- ☐ yes ☒ no

waste disposal

- ☐ yes ☒ no

petrol station

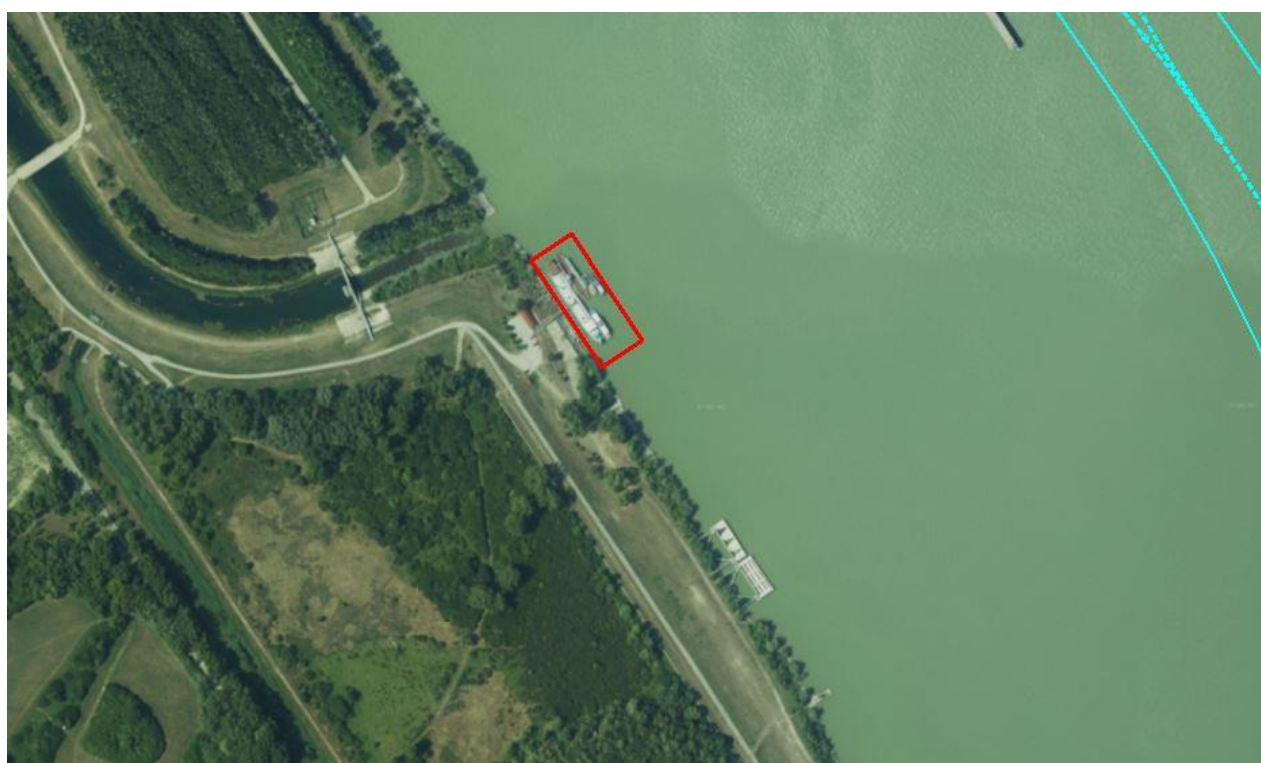
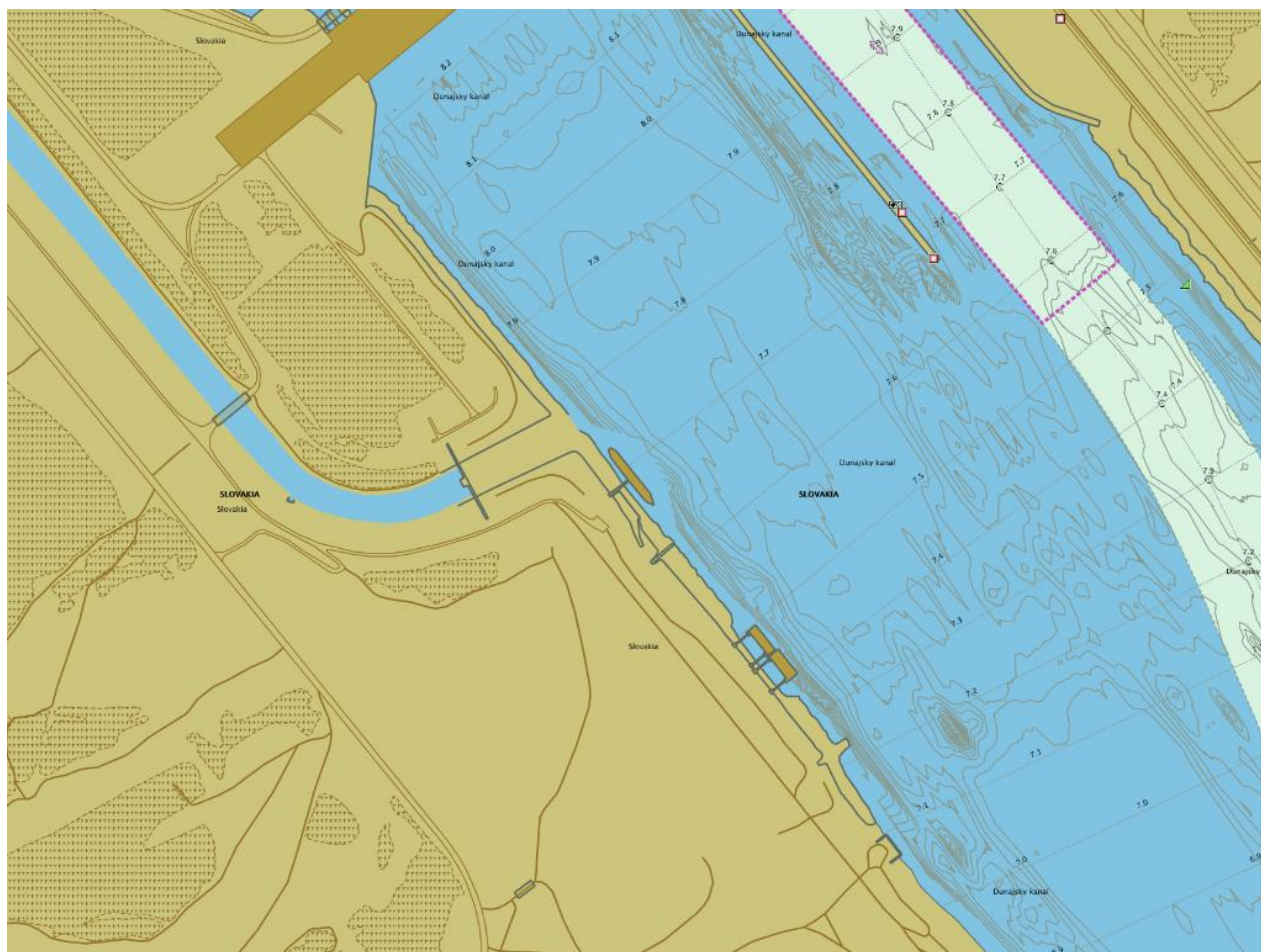
- ☐ yes ☒ no

safety in case of flood or storm

- ☐ yes ☒ no

Parking fees/costs

- ☐ yes ☒ no



Pristavisko SVP Gabčíkovo - ľavý breh

Danube km: 7.1 - 7.2

GPS coordinates:

North: 47° 52' 28.8"

East: 17° 33' 6.8"

berths information

length: 100 m

river bank

- ☒ L left river bank
☐ R right river bank
☐ T at the dam

location

- ☐ DPP "downstream" side of a power plant
☒ DL "downstream" side of a lock (lock entrance area)
☐ UL "upstream" side of a lock (lock entrance area)
☐ UPP "upstream" side of a power plant
☐ ARS along the river stretch
☐ OTHothers (before a harbour entrance in an old river branch)

local berths conditions

- ☐ 0 berthing permitted (i.e. anchoring or making fast to the bank)
☐ 1 berthing area reserved for pushing-navigation vessels that are required to carry one blue cone
☐ 2 berthing area reserved for pushing-navigation vessels that are required to carry two blue cones
☐ 3 berthing area reserved for pushing-navigation vessels that are required to carry three blue cones
☒ OTHother restrictions (only for small motor crafts, only for border control, only for damaged vessels after an accident, max. time allowed for berthing, ...)

facilities

stairs to go ashore

- ☐ yes ☒ no

possibility to load and unload cars from a vessel

- ☐ yes ☒ no

lightning

- ☐ yes ☒ no

river bank construction

- ☐ sheet pile wall
☐ embankment (slope)
☐ quay walls
☐ dam
☐ dolphins
☒ pontoon
☐ natural (wild)

specimen widths

- ☐ 1 beam
☐ 2 beams
☐ 3 beams

connections

ports/harbours in the surrounding area

- ☒ > 30km Bratislava Port, upstream

villages, cities in the surrounding area

- ☒ < 5 km Gabčíkovo

access road

- ☒ yes ☐ no

maintenance and disposal facilities

electricity supply

- ☐ yes ☒ no

fresh water supply

- ☐ yes ☒ no

waste disposal

- ☐ yes ☒ no

petrol station

- ☐ yes ☒ no

safety in case of flood or storm

- ☐ yes ☒ no

Parking fees/costs

- ☐ yes ☒ no

