

## **“NETWORK OF DANUBE WATERWAY ADMINISTRATIONS” – data & user orientation**

**SOUTH EAST EUROPE TRANSNATIONAL COOPERATION PROGRAMME**

### **“ATLAS OF BERTH”**

**Republic of Croatia**

<b>Document ID</b>	O 4.2.6
<b>Activity</b>	Act. 4.2
<b>Author/organisation</b>	<b>Version/date</b>
<b>Lidija Hubalek/AVP</b>	Final version/ 03.11.2014.



## TABLE OF CONTENTS

<b>1</b>	<b>OVERVIEW LIST OF THE BERTH/MOORING PLACES .....</b>	<b>3</b>
<b>2</b>	<b>MAP OF BERTHS .....</b>	<b>POGREŠKA! KNJIŽNA OZNAKA NIJE DEFINIRANA.</b>

# ATLAS OF BERTHS

## OVERVIEW LIST OF THE BERTH/MOORING PLACES

Backwater section (power plant) = name of the river section	River km		berth/mooring place (name)	useable length of the berth in meters	river bank* <sup>1</sup>	Location of the berth* <sup>2</sup>	construction of the river bank* <sup>3</sup>	local berth conditions* <sup>4</sup>	width of the berthing area on the water* <sup>5</sup>
	From	To							
Batina	1425,5		Batina pontoon	14,5 m	R	ARS	E	0	2
Aljmaš	1380,2		Aljmaš pontoon	14,5 m	R	ARS	E	0	2
Vukovar	1332,8		Vukovar pontoon	75 m	R	ARS	E	0	4
Ilok	1298,8		Ilok pontoon	55 m	R	ARS	E	0	3

\* in meters or max. number of vessels permitted to berth abreast

### Explanation

river bank* <sup>1</sup>	L	left river bank
	R	right river bank
	D	at the dam
location* <sup>2</sup>	DPP	"downstream" side of a power plant
	DL	"downstream" side of a lock (lock entrance area)
	UL	"upstream" side of a lock (lock entrance area)
	UPP	"upstream" side of a power plant
	ARS	along the river stretch

construction (of the river bank) * <sup>3</sup>	SPW	sheet pile wall
	E	embankment
	QW	quay wall
	DA	dam
	DO	dolphins
	NA	natural (wild)
width of the berthing area* <sup>5</sup>	X	maximum number of vessels permitted to berth abreast
local berth conditions* <sup>4</sup> (berthing order)	0	berthing permitted (i.e. anchoring or making fast to the bank)
	1	berthing area reserved for pushing-navigation vessels that are required to carry one blue cone
	2	berthing area reserved for pushing-navigation vessels that are required to carry two blue cones
	3	berthing area reserved for pushing-navigation vessels that are required to carry three blue cones

## MAP OF BERTHS

### Batina pontoon

**Danube km:** 1425,5 - 1425,45

**GPS coordinates:**

North: 45° 51' 9.76"

East: 18° 51' 14.99"

### berths information

**length:** 14,5 m

**river bank**

- ☐ L left river bank  
☒ R right river bank  
☐ T at the dam

**location**

- ☐ DPP "downstream" side of a power plant  
☐ DL "downstream" side of a lock (lock entrance area)  
☐ UL "upstream" side of a lock (lock entrance area)  
☐ UPP "upstream" side of a power plant  
☒ ARS along the river stretch  
☐ OTH others (before a harbour entrance in an old river branch)

### local berths conditions

- ☐ 0 berthing permitted (i.e. anchoring or making fast to the bank)  
☐ 1 berthing area reserved for pushing-navigation vessels that are required to carry one blue cone  
☐ 2 berthing area reserved for pushing-navigation vessels that are required to carry two blue cones  
☐ 3 berthing area reserved for pushing-navigation vessels that are required to carry three blue cones  
☒ OTH other restrictions (only for small motor crafts, only for border control, only for damaged vessels after an accident, max. time allowed for berthing,...))

### river bank construction

- ☐ sheet pile wall  
☐ embankment (slope)  
☐ quay walls  
☐ dam  
☐ dolphins  
☒ pontoon  
☐ natural (wild)

**specimen widths**

- ☐ 1 beam  
☐ 2 beams  
☐ 3 beams  
☒ two ship breadths

### connections

**ports/harbours in the surrounding area**

- ☒ > 30km Port Vukovar

**villages, cities in the surrounding area**

- ☒ < 5 km Batina

**access road**

- ☒ yes ☐ no

## facilities

### stairs to go ashore

☒ yes ☐ no

### possibility to load and unload cars from a vessel

☐ yes ☒ no

### lighting

☐ yes ☒ no

## maintenance and disposal facilities

### electricity supply

☐ yes ☒ no

### fresh water supply

☐ yes ☒ no

### waste disposal

☒ yes ☐ no

### petrol station

☐ yes ☒ no

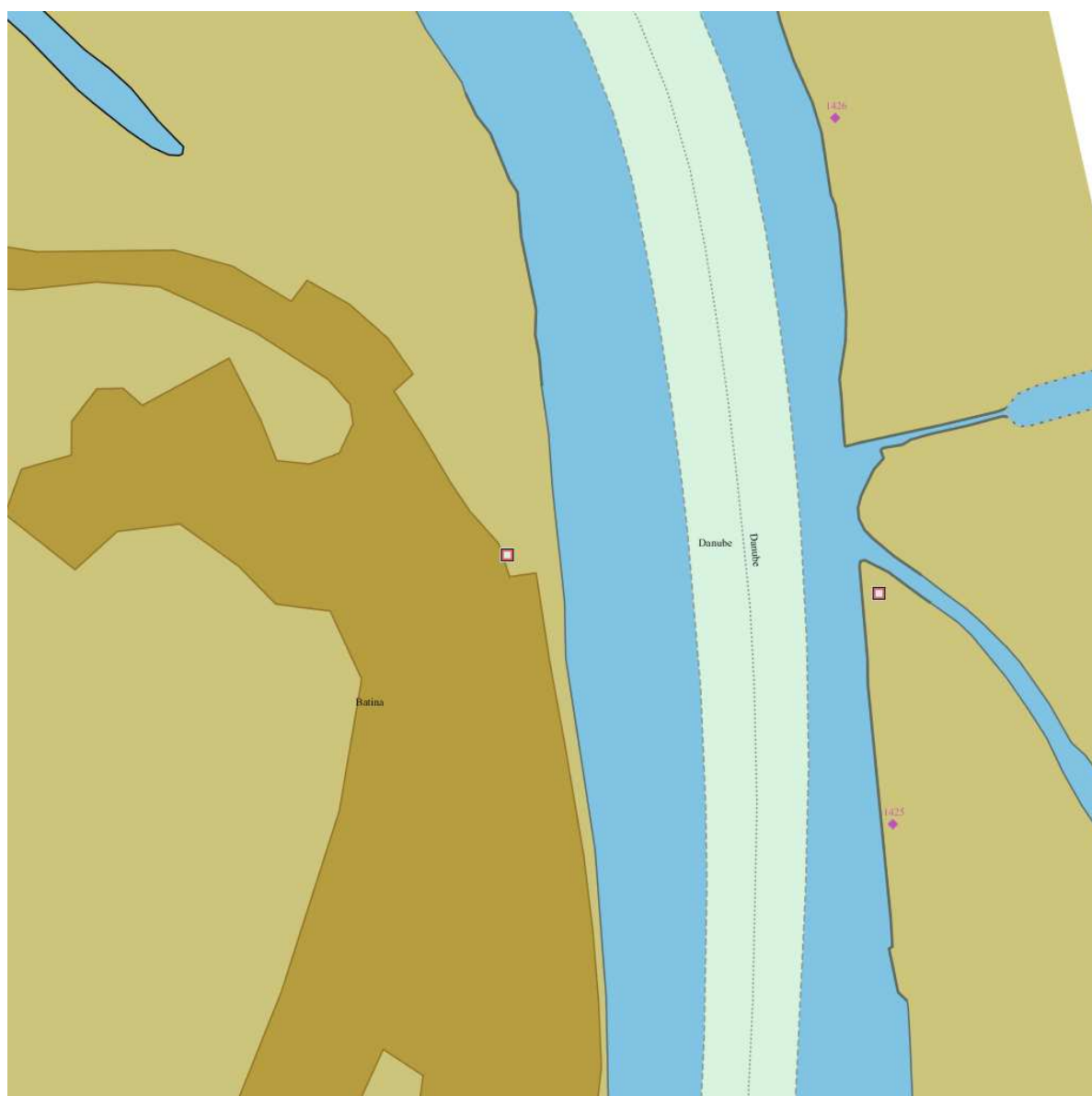
### safety in case of flood or storm

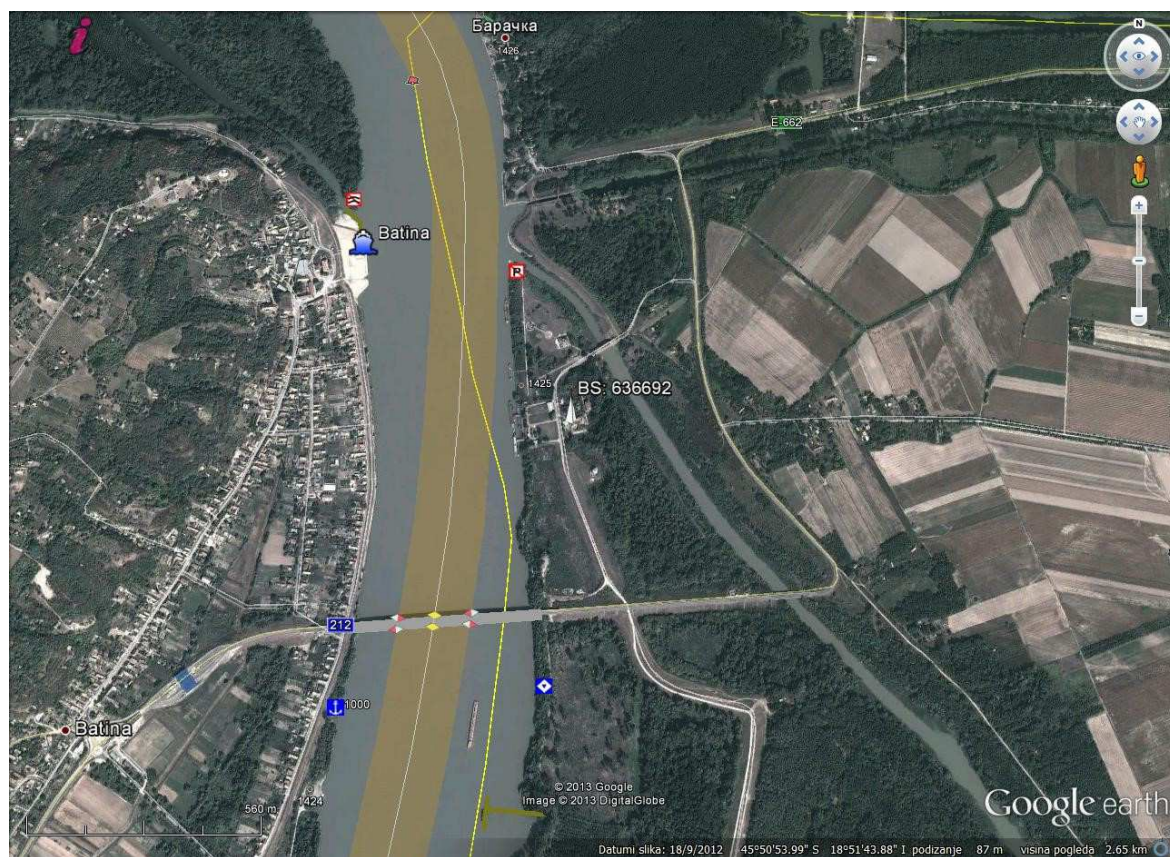
☐ yes ☒ no

### Parking fees/costs

☒ yes ☐ no

## Batina pontoon





## Aljmaš pontoon

**Danube km:** 1380,2 – 1380,15

**GPS coordinates:**

North: 45° 31' 52.69"

East: 18° 57' 7.29"

### berths information

**length:** 14,5 m

**river bank**

- ☐ L left river bank  
☒ R right river bank  
☐ T at the dam

**location**

- ☐ DPP "downstream" side of a power plant  
☐ DL "downstream" side of a lock (lock entrance area)  
☐ UL "upstream" side of a lock (lock entrance area)  
☐ UPP "upstream" side of a power plant  
☒ ARS along the river stretch  
☐ OTH others (before a harbour entrance in an old river branch)

### local berths conditions

- ☐ 0 berthing permitted (i.e. anchoring or making fast to the bank)  
☐ 1 berthing area reserved for pushing-navigation vessels that are required to carry one blue cone  
☐ 2 berthing area reserved for pushing-navigation vessels that are required to carry two blue cones  
☐ 3 berthing area reserved for pushing-navigation vessels that are required to carry three blue cones  
☒ OTH other restrictions (only for small motor crafts, only for border control, only for damaged vessels after an accident, max. time allowed for berthing,...))

### river bank construction

- ☐ sheet pile wall  
☐ embankment (slope)  
☐ quay walls  
☐ dam  
☐ dolphins  
☒ pontoon  
☐ natural (wild)

**specimen widths**

- ☐ 1 beam  
☐ 2 beams  
☐ 3 beams  
☒ two ship breadths

### connections

**ports/harbours in the surrounding area**

- ☒ > 30km Port Vukovar

**villages, cities in the surrounding area**

- ☒ < 5 km Aljmaš

**access road**

- ☒ yes ☐ no



## facilities

### stairs to go ashore

☒ yes ☐ no

### possibility to load and unload cars from a vessel

☐ yes ☒ no

### lighting

☒ yes ☐ no

## maintenance and disposal facilities

### electricity supply

☒ yes ☐ no

### fresh water supply

☒ yes ☐ no

### waste disposal

☒ yes ☐ no

### petrol station

☐ yes ☒ no

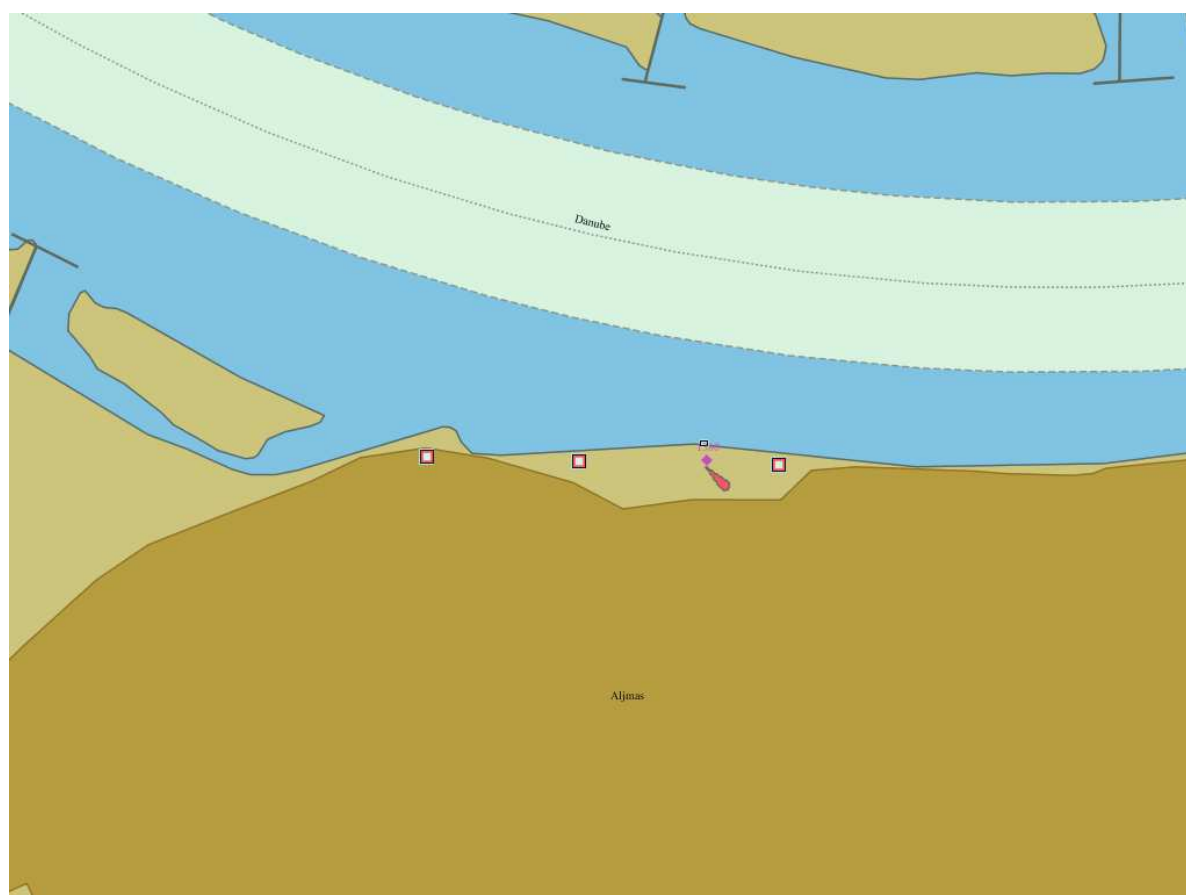
### safety in case of flood or storm

☐ yes ☒ no

### Parking fees/costs

☒ yes ☐ no

## Aljmaš pontoon





## Vukovar pontoon

**Danube km:** 1332,8 – 1332,7

**GPS coordinates:**

North: 45° 21' 6.3"

East: 19° 0' 22.16"

### berths information

**length: 75 m**

**river bank**

- ☐ L left river bank
- ☒ R right river bank
- ☐ T at the dam

**location**

- ☐ DPP "downstream" side of a power plant
- ☐ DL "downstream" side of a lock (lock entrance area)
- ☐ UL "upstream" side of a lock (lock entrance area)
- ☐ UPP "upstream" side of a power plant
- ☒ ARS along the river stretch
- ☐ OTH others (before a harbour entrance in an old river branch)

### local berths conditions

- ☐ 0 berthing permitted (i.e. anchoring or making fast to the bank)
- ☐ 1 berthing area reserved for pushing-navigation vessels that are required to carry one blue cone
- ☐ 2 berthing area reserved for pushing-navigation vessels that are required to carry two blue cones
- ☐ 3 berthing area reserved for pushing-navigation vessels that are required to carry three blue cones
- ☒ OTH other restrictions (only for small motor crafts, only for border control, only for damaged vessels after an accident, max. time allowed for berthing,...))

### river bank construction

- ☐ sheet pile wall
- ☐ embankment (slope)
- ☐ quay walls
- ☐ dam
- ☐ dolphins
- ☒ pontoon
- ☐ natural (wild)

**specimen widths**

- ☐ 1 beam
- ☐ 2 beams
- ☐ 3 beams
- ☒ four ship breadths

### connections

**ports/harbours in the surrounding area**

- ☒ < 5km Port Vukovar

**villages, cities in the surrounding area**

- ☒ < 5 km Vukovar

**access road**

- ☒ yes ☐ no

## facilities

### stairs to go ashore

☒ yes ☐ no

### possibility to load and unload cars from a vessel

☐ yes ☒ no

### lighting

☒ yes ☐ no

## maintenance and disposal facilities

### electricity supply

☒ yes ☐ no

### fresh water supply

☒ yes ☐ no

### waste disposal

☒ yes ☐ no

### petrol station

☐ yes ☒ no

### safety in case of flood or storm

☐ yes ☒ no

### Parking fees/costs

☒ yes ☐ no

## Vukovar pontoon







## Ilok pontoon

**Danube km:** 1298,8 – 1298,75

### GPS coordinates:

North: 45° 13' 50.17"

East: 19° 22' 44.4"

## berths information

**length: 55 m**

### river bank

- ☐ L left river bank  
☒ R right river bank  
☐ T at the dam

### location

- ☐ DPP "downstream" side of a power plant  
☐ DL "downstream" side of a lock (lock entrance area)  
☐ UL "upstream" side of a lock (lock entrance area)  
☐ UPP "upstream" side of a power plant  
☒ ARS along the river stretch  
☐ OTH others (before a harbour entrance in an old river branch)

## local berths conditions

- ☐ 0 berthing permitted (i.e. anchoring or making fast to the bank)  
☐ 1 berthing area reserved for pushing-navigation vessels that are required to carry one blue cone  
☐ 2 berthing area reserved for pushing-navigation vessels that are required to carry two blue cones  
☐ 3 berthing area reserved for pushing-navigation vessels that are required to carry three blue cones  
☒ OTH other restrictions (only for small motor crafts, only for border control, only for damaged vessels after an accident, max. time allowed for berthing,...))

## river bank construction

- ☐ sheet pile wall  
☐ embankment (slope)  
☐ quay walls  
☐ dam  
☐ dolphins  
☒ pontoon  
☐ natural (wild)

### specimen widths

- ☐ 1 beam  
☐ 2 beams  
☐ 3 beams  
☒ three ship breadths

## connections

### ports/harbours in the surrounding area

- ☒ > 30km Port Vukovar

### villages, cities in the surrounding area

- ☒ < 5 km Ilok

### access road

- ☒ yes ☐ no

## facilities

### stairs to go ashore

☒ yes ☐ no

### possibility to load and unload cars from a vessel

☐ yes ☒ no

### lighting

☒ yes ☐ no

## maintenance and disposal facilities

### electricity supply

☒ yes ☐ no

### fresh water supply

☒ yes ☐ no

### waste disposal

☒ yes ☐ no

### petrol station

☐ yes ☒ no

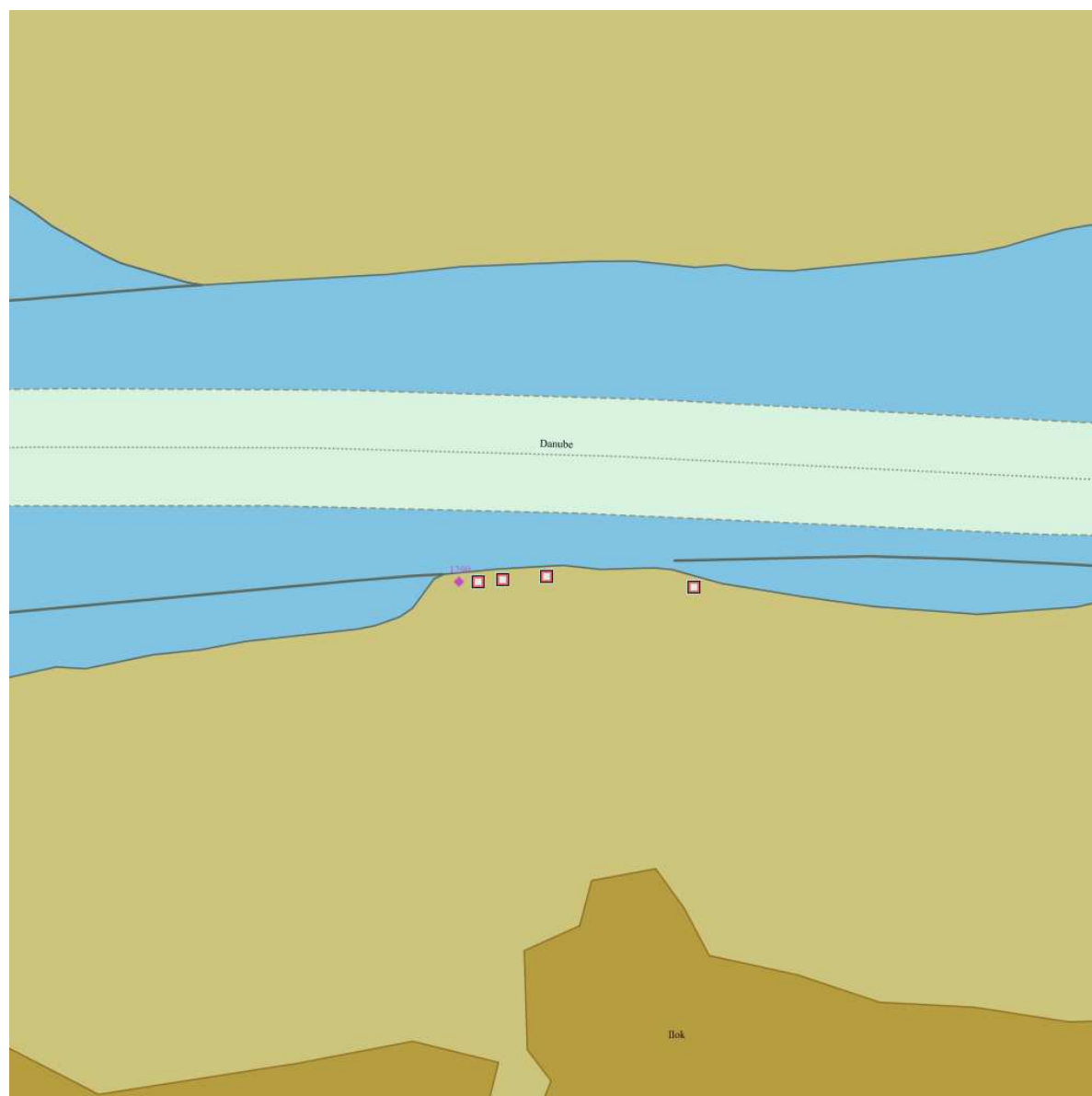
### safety in case of flood or storm

☐ yes ☒ no

### Parking fees/costs

☒ yes ☐ no

## Ilok pontoon





*end of document*