

ATLAS OF BERTHS - CROATIA

OVERVIEW LIST OF THE BERTH/MOORING PLACES

Backwater section (power plant) = name of the river section	River km		berth/mooring place (name)	useable length of the berth in meters	river bank* ¹	Location of the berth* ²	construction of the river bank* ³	local berth conditions* ⁴	width of the berthing area on the water* ^{*5}
	From	To							
Batina	1425,5		Batina pontoon	14,5 m	R	ARS	E	0	2
Aljmaš	1380,2		Aljmaš pontoon	14,5 m	R	ARS	E	0	2
Vukovar	1332,8		Vukovar pontoon	75 m	R	ARS	E	0	4
Ilok	1298,8		Ilok pontoon	55 m	R	ARS	E	0	3

* in meters or max. number of vessels permitted to berth abreast

Explanation

river bank*1	L	left river bank
	R	right river bank
	D	at the dam
location*2	DPP	"downstream" side of a power plant
	DL	"downstream" side of a lock (lock entrance area)
	UL	"upstream" side of a lock (lock entrance area)
	UPP	"upstream" side of a power plant
	ARS	along the river stretch

construction (of the river bank) *3	SPW	sheet pile wall
	E	embankment
	QW	quay wall
	DA	dam
	DO	dolphins
	NA	natural (wild)
width of the berthing area*5	X	maximum number of vessels permitted to berth abreast
local berth conditions*4 (berthing order)	0	berthing permitted (i.e. anchoring or making fast to the bank)
	1	berthing area reserved for pushing-navigation vessels that are required to carry one blue cone
	2	berthing area reserved for pushing-navigation vessels that are required to carry two blue cones
	3	berthing area reserved for pushing-navigation vessels that are required to carry three blue cones

MAP OF BERTHS

Batina pontoon

Danube km: 1425,5 - 1425,45

GPS coordinates:

North: 45° 51' 9.76"

East: 18° 51' 14.99"

berths information

length: 14,5 m

river bank

- ☐ L left river bank
- ☒ R right river bank
- ☐ T at the dam

location

- ☐ DPP "downstream" side of a power plant
- ☐ DL "downstream" side of o lock (lock entrance area)
- ☐ UL "upstream" side of a lock (lock entrance area)
- ☐ UPP "upstream" side of a power plant
- ☒ ARS along the river strech
- ☐ OTH others (before a harbour entrance in an old river branch)

local berths conditions

- ☐ 0 berthing permitted (i.e. anchoring or making fast to the bank)
- ☐ 1 berthing area reserved for pushing-navigation vessels that are required to carry one blue cone
- ☐ 2 berthing area reserved for pushing-navigation vessels that are required to carry two blue cones
- ☐ 3 berthing area reserved for pushing-navigation vessels that are required to carry three blue cones
- ☒ OTH other restrictions (only for small motor crafts, only for border control, only for damaged vessels after an accident, max. time allowed for berthing,...))

river bank construction

- ☐ sheet pile wall
- ☐ embankment (slope)
- ☐ quay walls
- ☐ dam
- ☐ dolphins
- ☒ pontoon
- ☐ natural (wild)

specimen widths

- ☐ 1 beam
- ☐ 2 beams
- ☐ 3 beams
- ☒ two ship breadths

connections

ports/harbours in the surrounding area

- ☒ > 30km Port Vukovar

villages, cities in the surrounding area

- ☒ < 5 km Batina

access road

- ☒ yes ☐ no

facilities

stairs to go ashore

☒ yes ☐ no

possibility to load and unload cars from a vessel

☐ yes ☒ no

lighting

☐ yes ☒ no

maintenance and disposal facilities

electricity supply

☐ yes ☒ no

fresh water supply

☐ yes ☒ no

waste disposal

☒ yes ☐ no

petrol station

☐ yes ☒ no

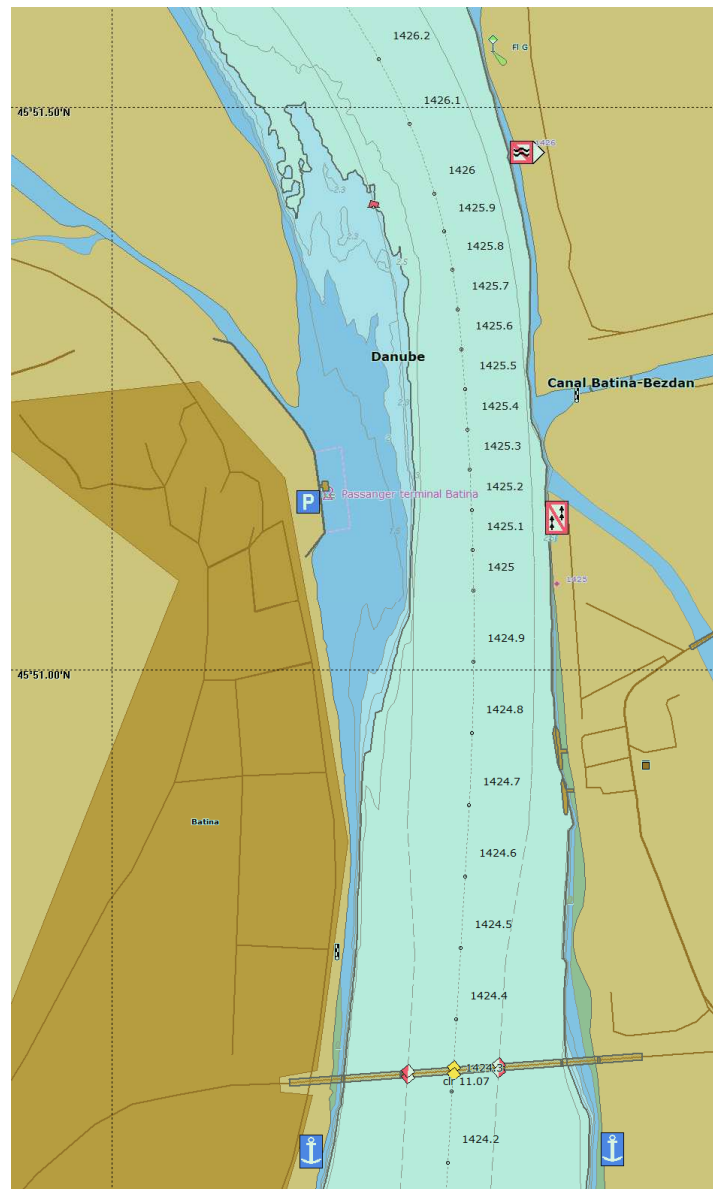
safety in case of flood or storm

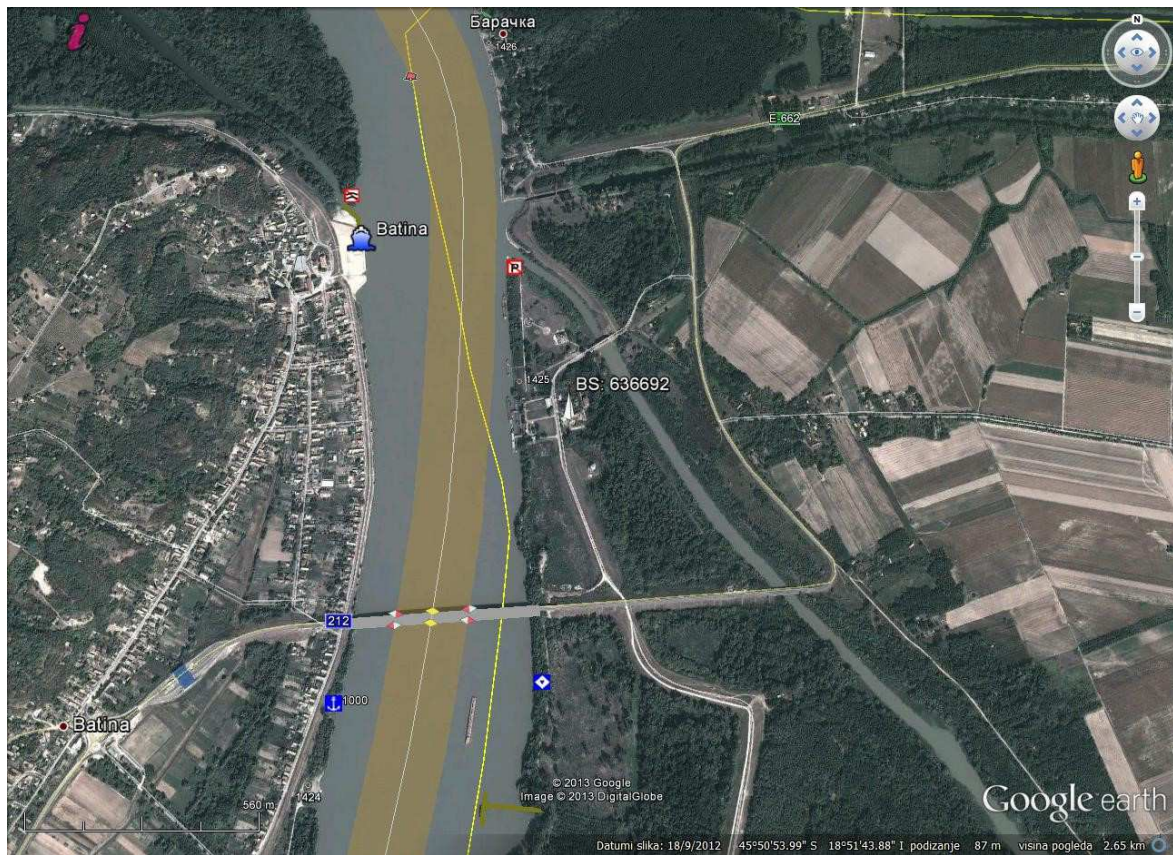
☐ yes ☒ no

Parking fees/costs

☒ yes ☐ no

Batina pontoon





Aljmaš pontoon

Danube km: 1380,2 – 1380,15

GPS coordinates:

North: 45° 31' 52.69"

East: 18° 57' 7.29"

berths information

length: 14,5 m

river bank

- ☐ L left river bank
- ☒ R right river bank
- ☐ T at the dam

location

- ☐ DPP "downstream" side of a power plant
- ☐ DL "downstream" side of a lock (lock entrance area)
- ☐ UL "upstream" side of a lock (lock entrance area)
- ☐ UPP "upstream" side of a power plant
- ☒ ARS along the river stretch
- ☐ OTH others (before a harbour entrance in an old river branch)

local berths conditions

- ☐ 0 berthing permitted (i.e. anchoring or making fast to the bank)
- ☐ 1 berthing area reserved for pushing-navigation vessels that are required to carry one blue cone
- ☐ 2 berthing area reserved for pushing-navigation vessels that are required to carry two blue cones
- ☐ 3 berthing area reserved for pushing-navigation vessels that are required to carry three blue cones
- ☒ OTH other restrictions (only for small motor crafts, only for border control, only for damaged vessels after an accident, max. time allowed for berthing,...))

river bank construction

- ☐ sheet pile wall
- ☐ embankment (slope)
- ☐ quay walls
- ☐ dam
- ☐ dolphins
- ☒ pontoon
- ☐ natural (wild)

specimen widths

- ☐ 1 beam
- ☐ 2 beams
- ☐ 3 beams
- ☒ two ship breadths

connections

ports/harbours in the surrounding area

- ☒ > 30km Port Vukovar

villages, cities in the surrounding area

- ☒ < 5 km Aljmaš

access road

- ☒ yes ☐ no

facilities

stairs to go ashore

☒ yes ☐ no

possibility to load and unload cars from a vessel

☐ yes ☒ no

lighting

☒ yes ☐ no

maintenance and disposal facilities

electricity supply

☒ yes ☐ no

fresh water supply

☒ yes ☐ no

waste disposal

☒ yes ☐ no

petrol station

☐ yes ☒ no

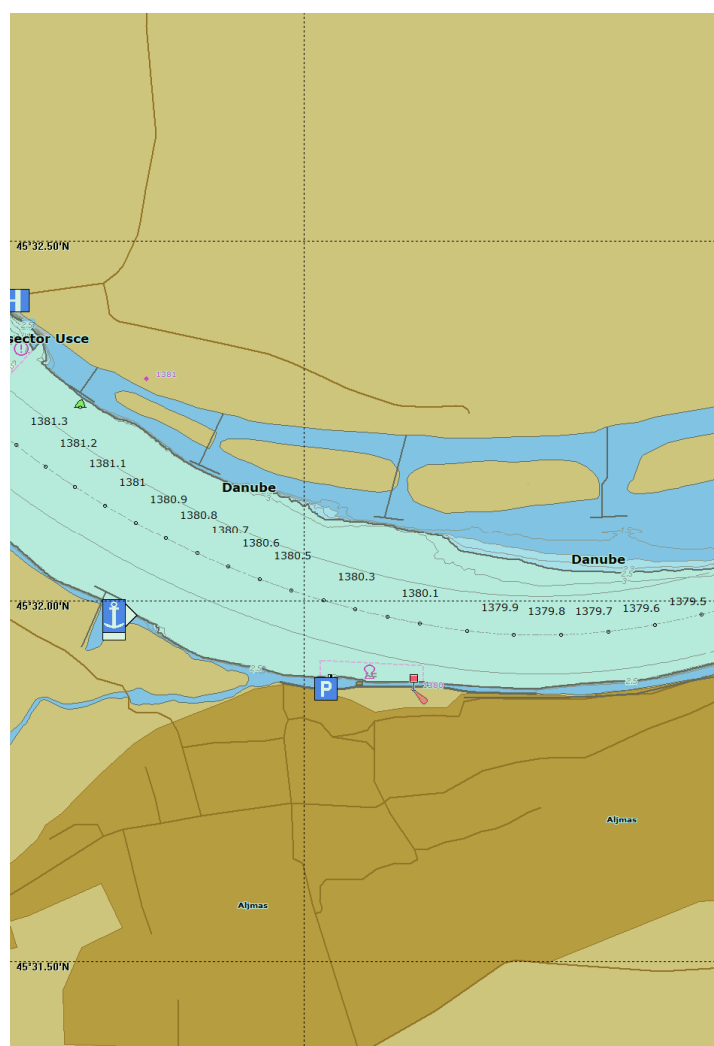
safety in case of flood or storm

☐ yes ☒ no

Parking fees/costs

☒ yes ☐ no

Aljmaš pontoon





Vukovar pontoon

Danube km: 1332,8 – 1332,7

GPS coordinates:

North: 45° 21' 6.3"

East: 19° 0' 22.16"

berths information

length: 75 m

river bank

- ☐ L left river bank
- ☒ R right river bank
- ☐ T at the dam

location

- ☐ DPP "downstream" side of a power plant
- ☐ DL "downstream" side of a lock (lock entrance area)
- ☐ UL "upstream" side of a lock (lock entrance area)
- ☐ UPP "upstream" side of a power plant
- ☒ ARS along the river stretch
- ☐ OTH others (before a harbour entrance in an old river branch)

local berths conditions

- ☐ 0 berthing permitted (i.e. anchoring or making fast to the bank)
- ☐ 1 berthing area reserved for pushing-navigation vessels that are required to carry one blue cone
- ☐ 2 berthing area reserved for pushing-navigation vessels that are required to carry two blue cones
- ☐ 3 berthing area reserved for pushing-navigation vessels that are required to carry three blue cones
- ☒ OTH other restrictions (only for small motor crafts, only for border control, only for damaged vessels after an accident, max. time allowed for berthing,...))

river bank construction

- ☐ sheet pile wall
- ☐ embankment (slope)
- ☐ quay walls
- ☐ dam
- ☐ dolphins
- ☒ pontoon
- ☐ natural (wild)

specimen widths

- ☐ 1 beam
- ☐ 2 beams
- ☐ 3 beams
- ☒ four ship breadths

connections

ports/harbours in the surrounding area

- ☒ < 5km Port Vukovar

villages, cities in the surrounding area

- ☒ < 5 km Vukovar

access road

- ☒ yes ☐ no

facilities

stairs to go ashore

☒ yes ☐ no

possibility to load and unload cars from a vessel

☐ yes ☒ no

lighting

☒ yes ☐ no

maintenance and disposal facilities

electricity supply

☒ yes ☐ no

fresh water supply

☒ yes ☐ no

waste disposal

☒ yes ☐ no

petrol station

☐ yes ☒ no

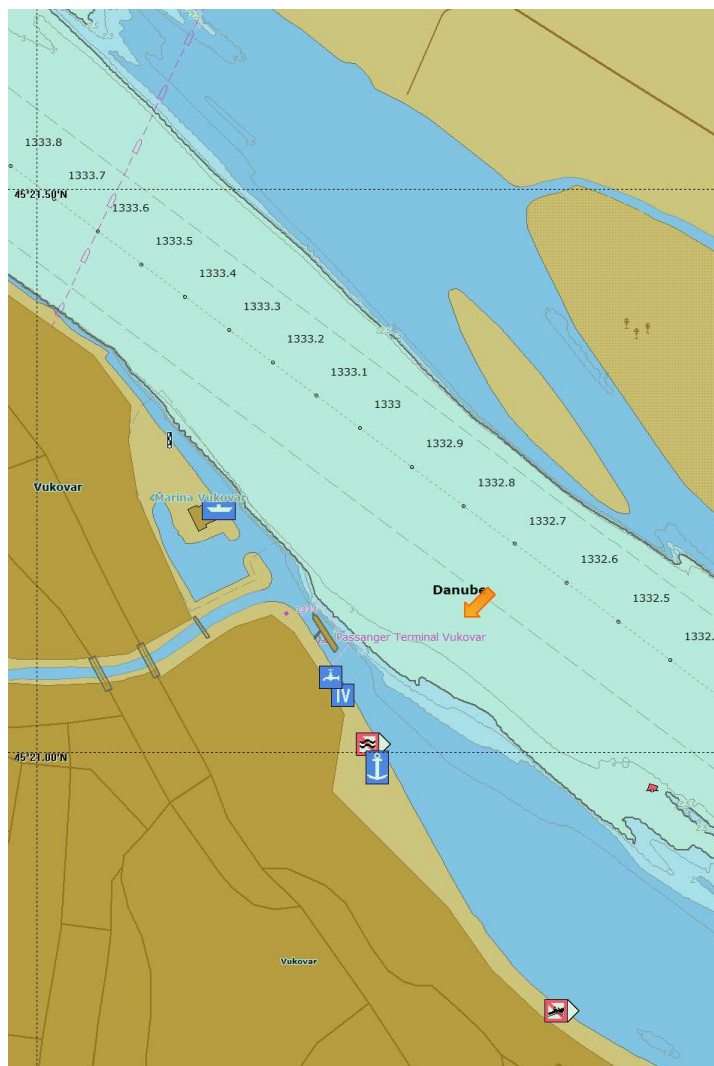
safety in case of flood or storm

☐ yes ☒ no

Parking fees/costs

☒ yes ☐ no

Vukovar pontoon





Ilok pontoon

Danube km: 1298,8 – 1298,75

GPS coordinates:

North: 45° 13' 50.17"

East: 19° 22' 44.4"

berths information

length: 55 m

river bank

- ☐ L left river bank
- ☒ R right river bank
- ☐ T at the dam

location

- ☐ DPP "downstream" side of a power plant
- ☐ DL "downstream" side of a lock (lock entrance area)
- ☐ UL "upstream" side of a lock (lock entrance area)
- ☐ UPP "upstream" side of a power plant
- ☒ ARS along the river stretch
- ☐ OTH others (before a harbour entrance in an old river branch)

local berths conditions

- ☐ 0 berthing permitted (i.e. anchoring or making fast to the bank)
- ☐ 1 berthing area reserved for pushing-navigation vessels that are required to carry one blue cone
- ☐ 2 berthing area reserved for pushing-navigation vessels that are required to carry two blue cones
- ☐ 3 berthing area reserved for pushing-navigation vessels that are required to carry three blue cones
- ☒ OTH other restrictions (only for small motor crafts, only for border control, only for damaged vessels after an accident, max. time allowed for berthing,...))

river bank construction

- ☐ sheet pile wall
- ☐ embankment (slope)
- ☐ quay walls
- ☐ dam
- ☐ dolphins
- ☒ pontoon
- ☐ natural (wild)

specimen widths

- ☐ 1 beam
- ☐ 2 beams
- ☐ 3 beams
- ☒ three ship breadths

connections

ports/harbours in the surrounding area

- ☒ > 30km Port Vukovar

villages, cities in the surrounding area

- ☒ < 5 km Ilok

access road

- ☒ yes ☐ no

facilities

stairs to go ashore

☒ yes ☐ no

possibility to load and unload cars from a vessel

☐ yes ☒ no

lighting

☒ yes ☐ no

maintenance and disposal facilities

electricity supply

☒ yes ☐ no

fresh water supply

☒ yes ☐ no

waste disposal

☒ yes ☐ no

petrol station

☐ yes ☒ no

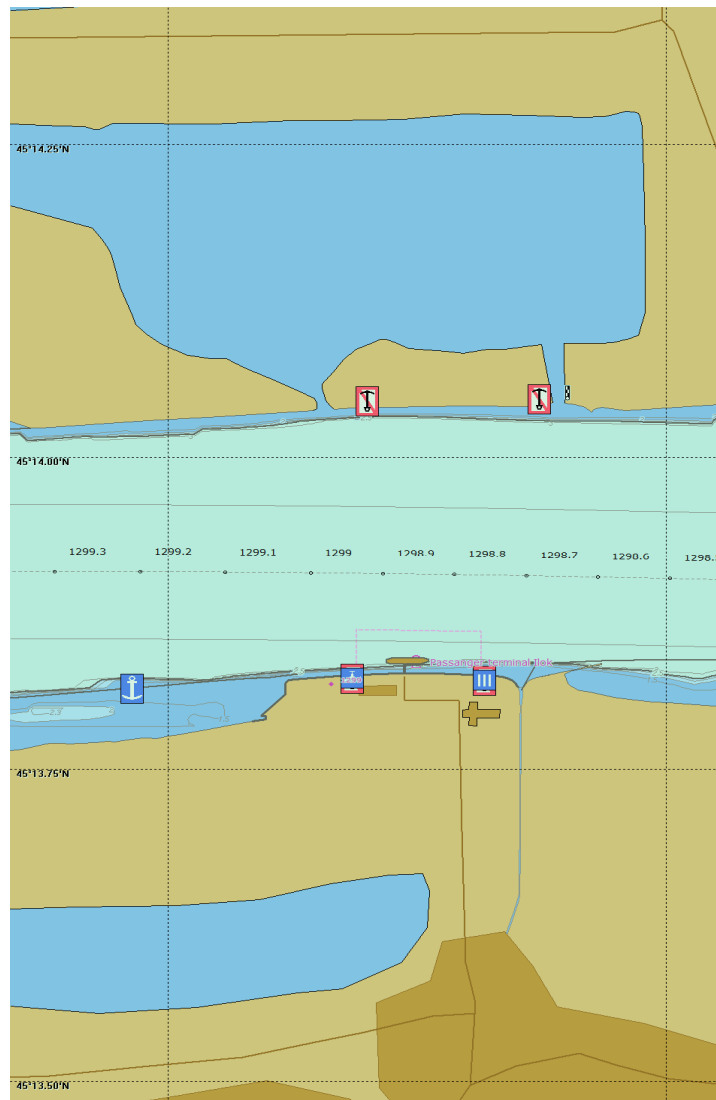
safety in case of flood or storm

☐ yes ☒ no

Parking fees/costs

☒ yes ☐ no

Ilok pontoon





end of document