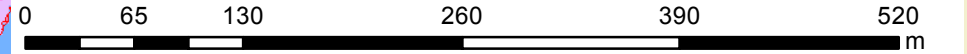


Kisapostag shallow section Danube 1567.30 - 1565.90 rkm

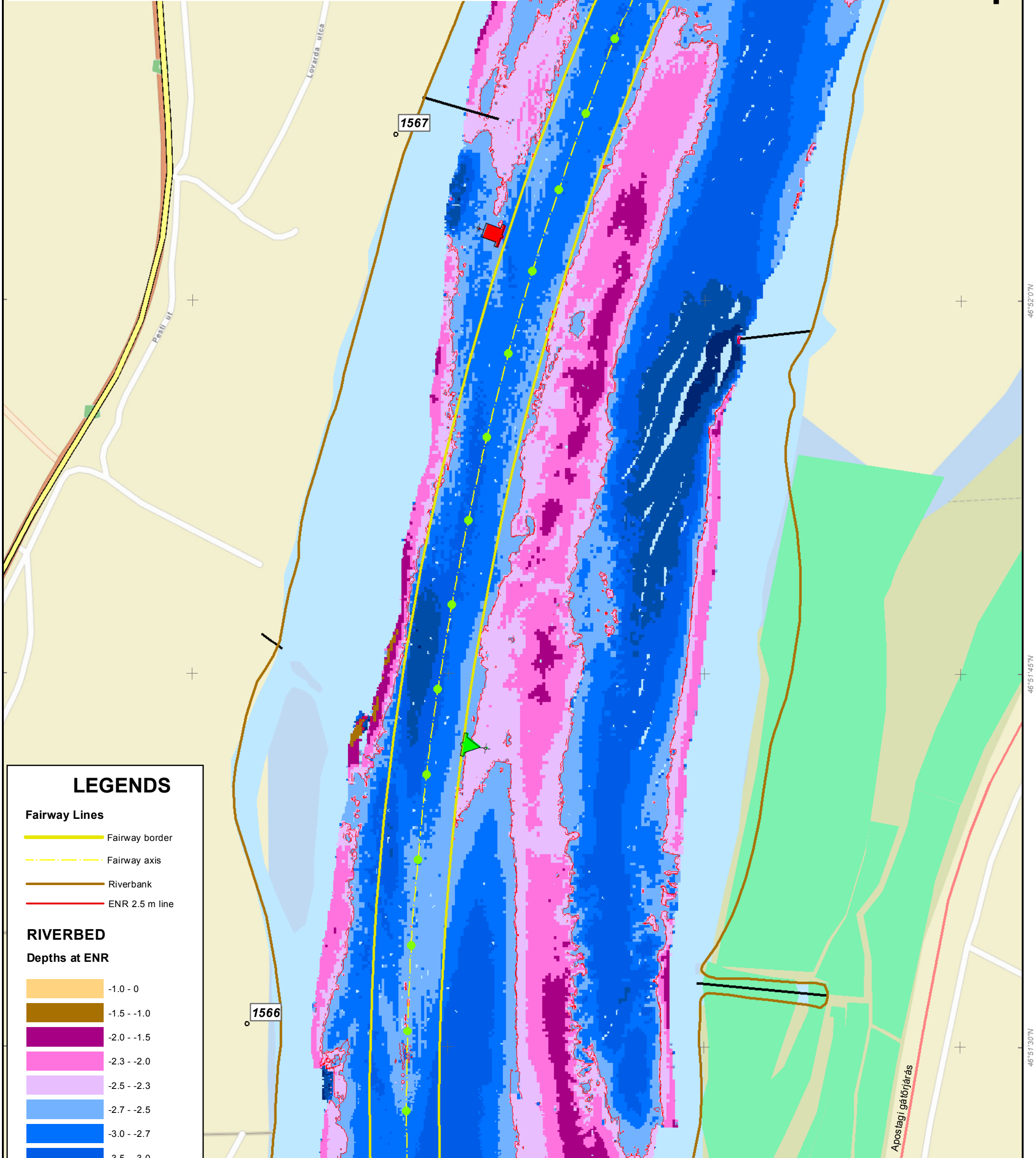
KDVVIZIG - multibeam
Date of sounding: 04.2014.

18°55'15"E 18°55'30"E 18°55'45"E 18°56'0"E

Fairway parameters at ENR:
22 dm in 80 m;
ENR level: Dunaföldvár gauge -116 cm (1560.60 rkm)
25 dm in 80 m between Dunaföldvár: -69 cm and -25 cm
25 dm in 130 m between Dunaföldvár: -26 cm and +25 cm



1:4500



LEGENDS

- Fairway Lines**
- Fairway border
 - - - Fairway axis
 - Riverbank
 - ENR 2.5 m line

RIVERBED
Depths at ENR

	-1.0 - 0
	-1.5 - -1.0
	-2.0 - -1.5
	-2.3 - -2.0
	-2.5 - -2.3
	-2.7 - -2.5
	-3.0 - -2.7
	-3.5 - -3.0
	-5.0 - -3.5
	> -5.0

Please note that since the time of recording, the riverbed and the signalling may have changed. The exact location of the fairway is shown by the buoys. Indicated depths are reduced to water level ENR2006.

18°55'15"E 18°55'30"E 18°55'45"E 18°56'0"E