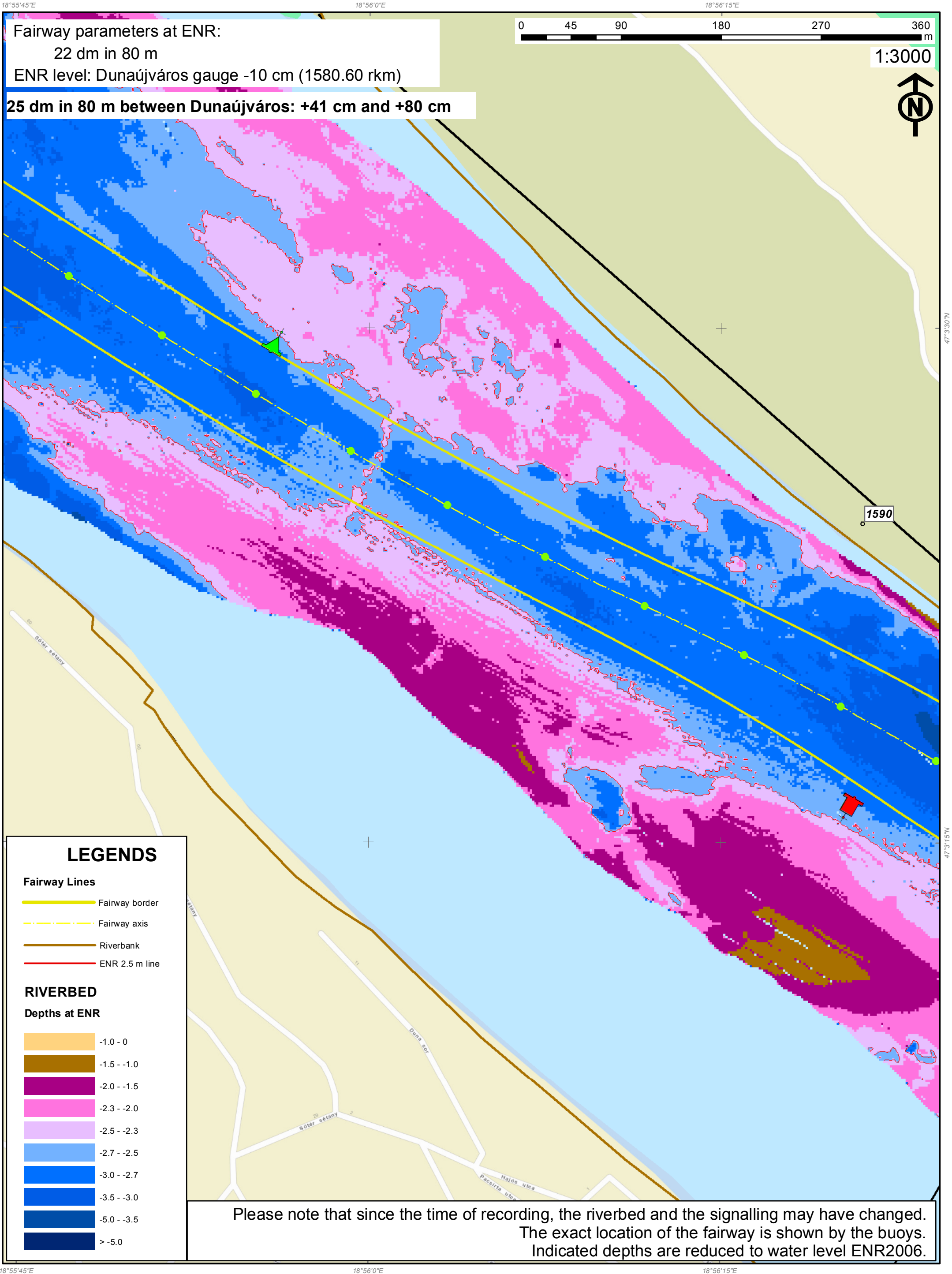


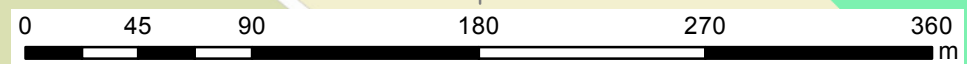
Kulcs shallow section Danube 1590.60 - 1590.10 rkm

KDVVIZIG - multibeam
Date of sounding: 05.2014.



Fairway parameters at ENR:
22 dm in 80 m
ENR level: Dunaújváros gauge -10 cm (1580.60 rkm)

25 dm in 80 m between Dunaújváros: +41 cm and +80 cm



1:3000



LEGENDS

- Fairway Lines**
- Fairway border
 - - - Fairway axis
 - Riverbank
 - ENR 2.5 m line

- RIVERBED**
Depths at ENR
- 1.0 - 0
 - 1.5 - -1.0
 - 2.0 - -1.5
 - 2.3 - -2.0
 - 2.5 - -2.3
 - 2.7 - -2.5
 - 3.0 - -2.7
 - 3.5 - -3.0
 - 5.0 - -3.5
 - > -5.0

Please note that since the time of recording, the riverbed and the signalling may have changed. The exact location of the fairway is shown by the buoys. Indicated depths are reduced to water level ENR2006.