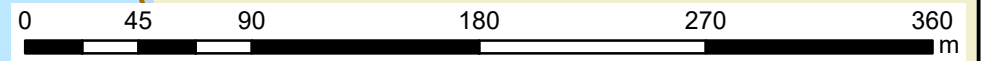


# Ercsi narrow section Danube 1616.70 - 1616.30 rkm

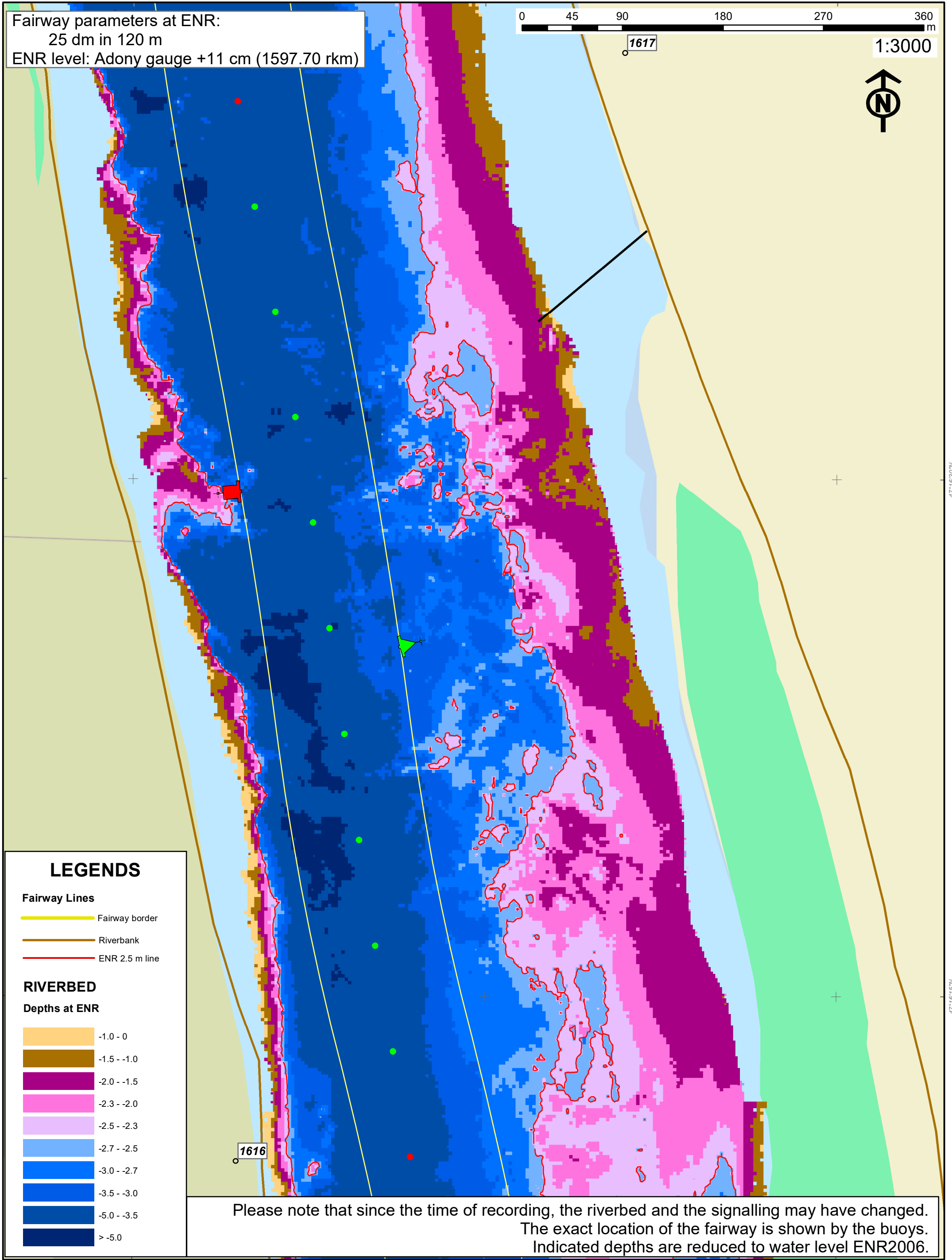
**KDVVIZIG - multibeam**  
**Date of sounding: 2016.**

Fairway parameters at ENR:  
25 dm in 120 m  
ENR level: Adony gauge +11 cm (1597.70 rkm)



1617

1:3000



## LEGENDS

### Fairway Lines

- Fairway border
- Riverbank
- ENR 2.5 m line

### RIVERBED

#### Depths at ENR

- 1.0 - 0
- 1.5 - -1.0
- 2.0 - -1.5
- 2.3 - -2.0
- 2.5 - -2.3
- 2.7 - -2.5
- 3.0 - -2.7
- 3.5 - -3.0
- 5.0 - -3.5
- > -5.0

1616

Please note that since the time of recording, the riverbed and the signalling may have changed. The exact location of the fairway is shown by the buoys. Indicated depths are reduced to water level ENR2006.

18°55'0"E

18°55'15"E

18°55'30"E

47°16'30"N

47°16'15"N

47°16'30"N

47°16'15"N