

Dunafüred shallow section Danube 1619.10 - 1617.90 rkm

KDVVIZIG - multibeam
Date of sounding: 11. 2013.

18°54'45"E

18°55'0"E

18°55'15"E

18°55'30"E

Fairway parameters at ENR:

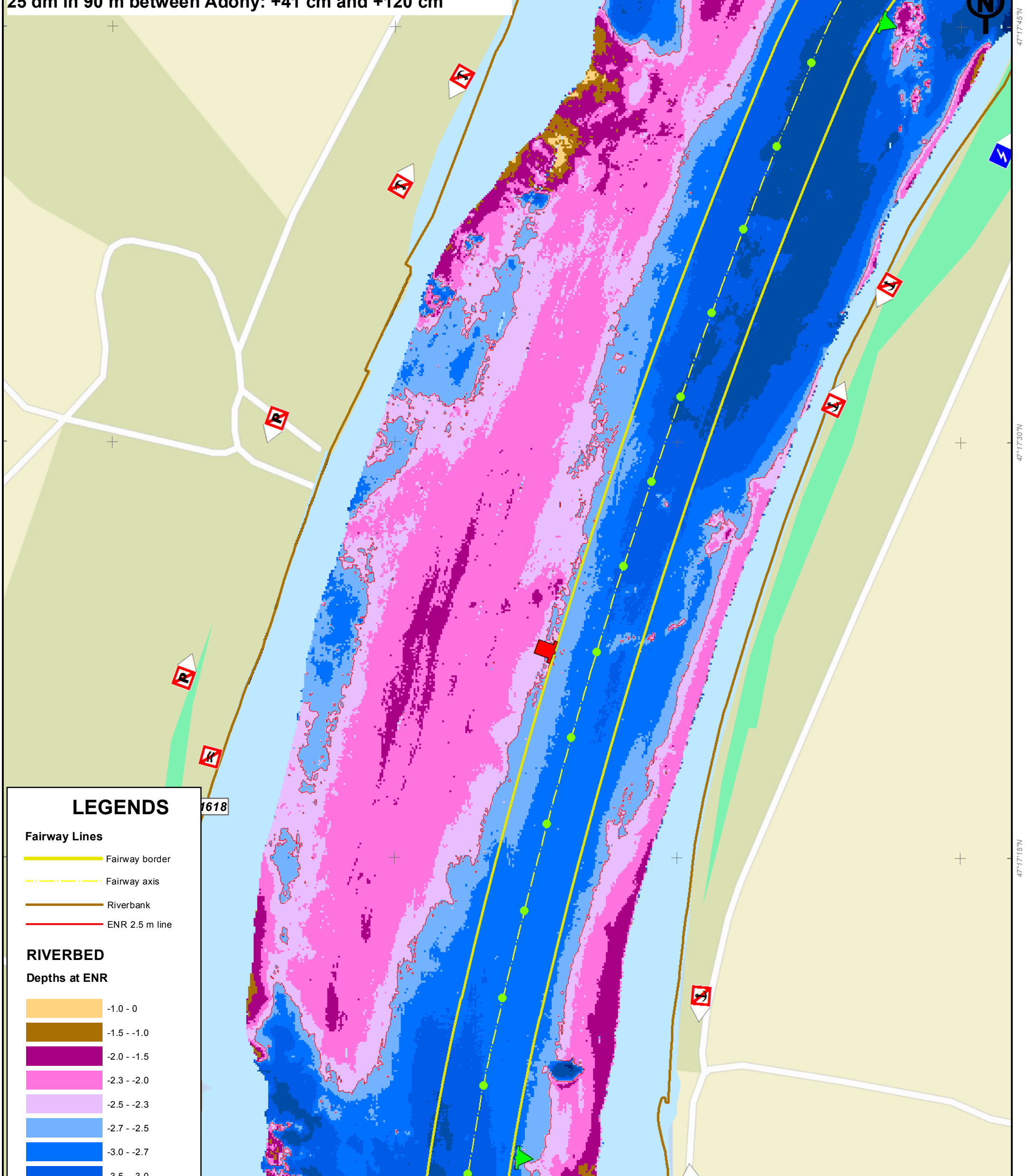
24 dm in 90 m (25 dm in 50 m along red bouys)

ENR level: Adony gauge +11 cm (1597.70 rkm)

25 dm in 90 m between Adony: +41 cm and +120 cm

161:0 60 120 240 360 480 m

1:4000



LEGENDS

Fairway Lines

- Fairway border
- Fairway axis
- Riverbank
- ENR 2.5 m line

RIVERBED

Depths at ENR

- 1.0 - 0
- 1.5 - -1.0
- 2.0 - -1.5
- 2.3 - -2.0
- 2.5 - -2.3
- 2.7 - -2.5
- 3.0 - -2.7
- 3.5 - -3.0
- 5.0 - -3.5
- > -5.0

Please note that since the time of recording, the riverbed and the signalling may have changed.
The exact location of the fairway is shown by the bouys.
Indicated depths are reduced to water level ENR2006.

18°54'45"E

18°55'0"E

18°55'15"E

18°55'30"E