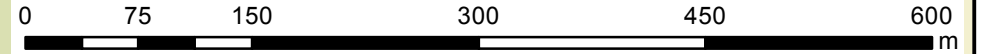


Lower-Dömös shallow section Danube 1699.30 - 1697.60 rkm

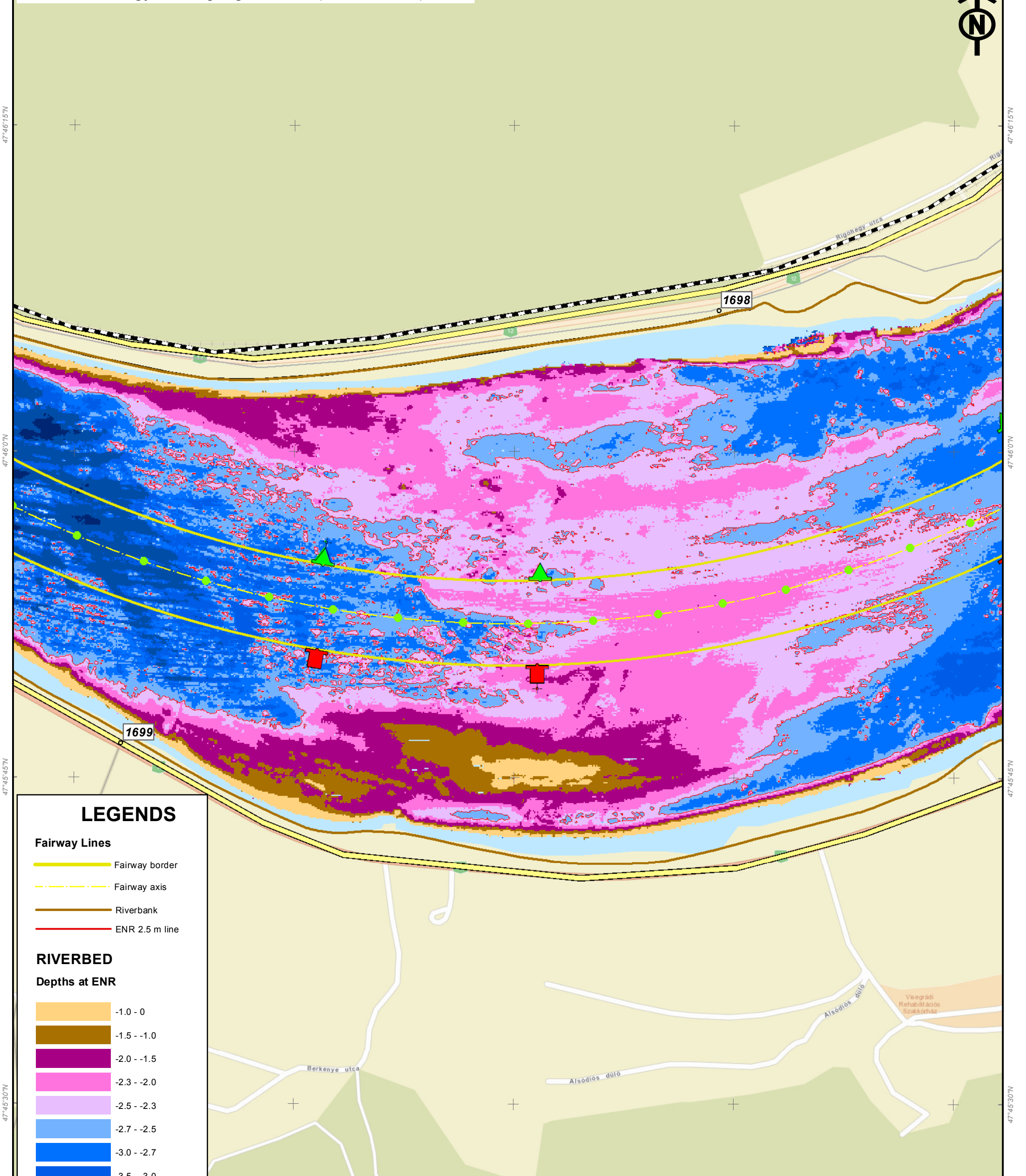
KDVVIZIG - multibeam Date of sounding: 07. 2013.

18°55'30"E 18°55'45"E 18°56'0"E 18°56'15"E 18°56'30"E

Fairway parameters at ENR:
18 dm in 120 m (19 dm in 50 m along green bouys)
ENR level: Nagymaros gauge -10 cm (1694.60 rkm)



1:5000



LEGENDS

- Fairway Lines**
- Fairway border
 - - - - Fairway axis
 - Riverbank
 - ENR 2.5 m line

RIVERBED
Depths at ENR

	-1.0 - 0
	-1.5 - -1.0
	-2.0 - -1.5
	-2.3 - -2.0
	-2.5 - -2.3
	-2.7 - -2.5
	-3.0 - -2.7
	-3.5 - -3.0
	-5.0 - -3.5
	> -5.0

Please note that since the time of recording, the riverbed and the signalling may have changed. The exact location of the fairway is shown by the bouys. Indicated depths are reduced to water level ENR2006.

18°55'30"E 18°55'45"E 18°56'0"E 18°56'15"E 18°56'30"E