

# Upper-Kulcs narrow section Danube 1591.80 - 1591.30 rkm

**KDVVIZIG - multibeam**  
**Date of sounding: 05.2014.**

18°55'0"E

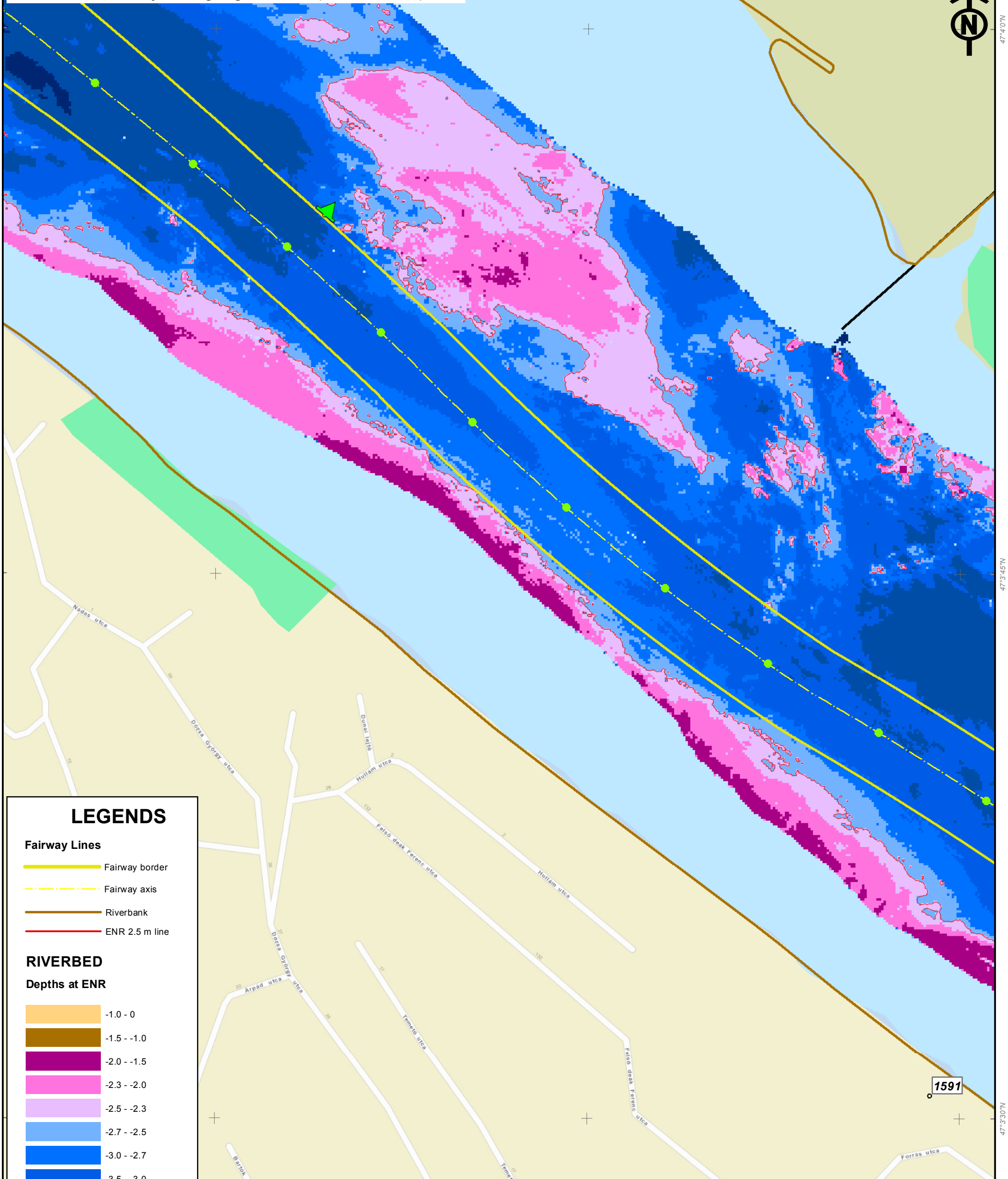
18°55'15"E

18°55'30"E

Fairway parameters at ENR:  
25 dm in 80 m  
ENR level: Dunaújváros gauge -10 cm (1580.60 rkm)

0 45 90 180 270 360 m

1:3000



## LEGENDS

- Fairway Lines**
- Fairway border
  - - - Fairway axis
  - Riverbank
  - ENR 2.5 m line

**RIVERBED**  
**Depths at ENR**

- 1.0 - 0
- 1.5 - -1.0
- 2.0 - -1.5
- 2.3 - -2.0
- 2.5 - -2.3
- 2.7 - -2.5
- 3.0 - -2.7
- 3.5 - -3.0
- 5.0 - -3.5
- > -5.0

Please note that since the time of recording, the riverbed and the signalling may have changed.  
The exact location of the fairway is shown by the buoys.  
Indicated depths are reduced to water level ENR2006.

18°55'0"E

18°55'15"E

18°55'30"E

47°4'0"N

47°3'45"N

47°3'30"N

47°4'0"N

47°3'45"N

47°3'30"N