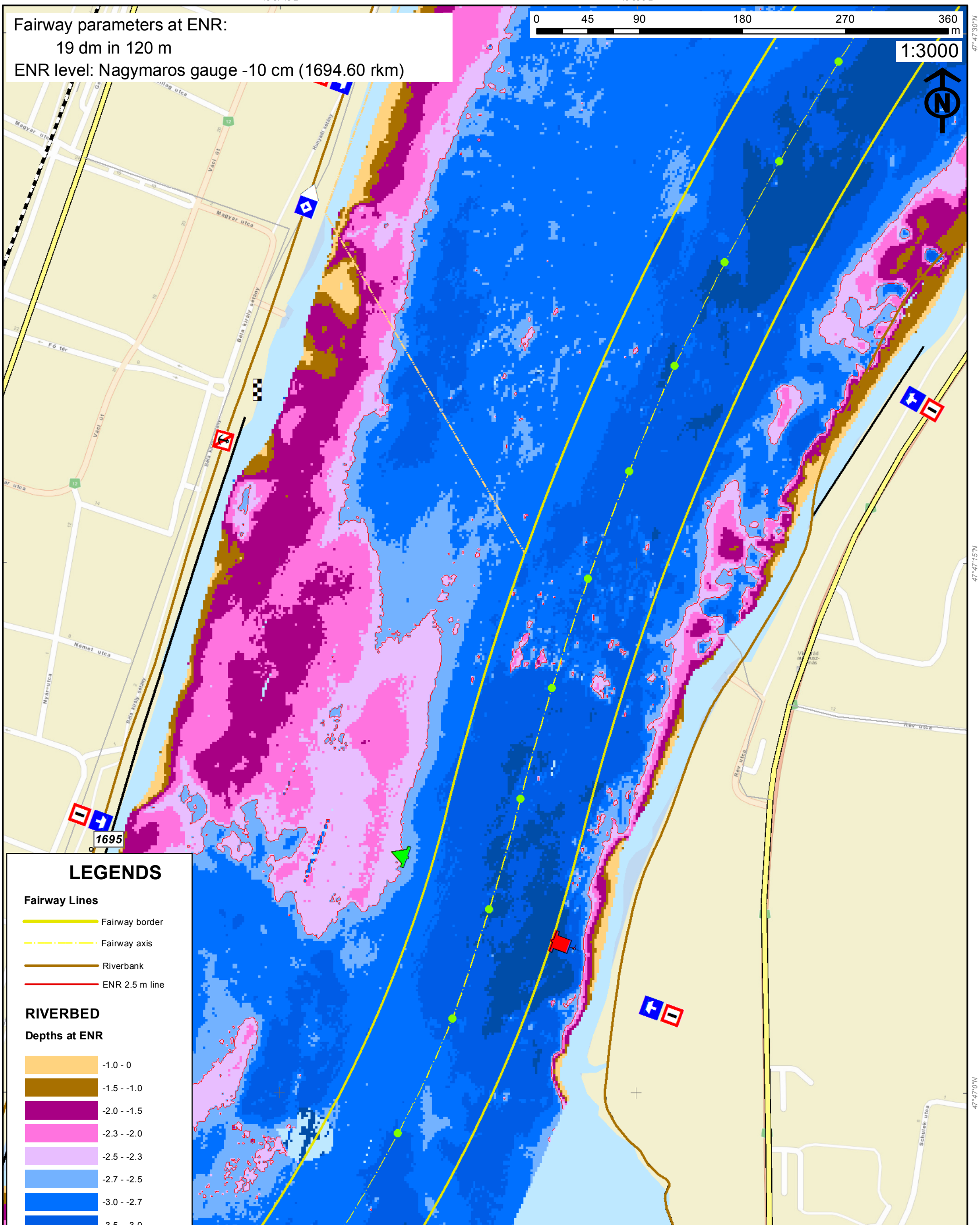
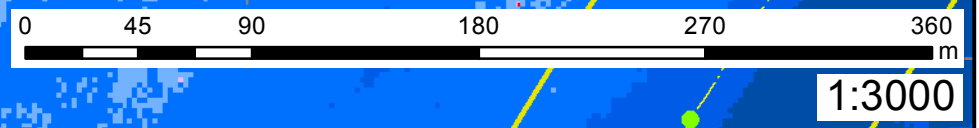


Visegrád shallow section Danube 1694.70 - 1694.60 rkm

KDVVIZIG - multibeam
Date of sounding: 06. 2014.

Fairway parameters at ENR:
19 dm in 120 m
ENR level: Nagymaros gauge -10 cm (1694.60 rkm)



LEGENDS

Fairway Lines

- Fairway border
- Fairway axis
- Riverbank
- ENR 2.5 m line

RIVERBED

Depths at ENR

Orange	-1.0 - 0
Brown	-1.5 - -1.0
Purple	-2.0 - -1.5
Pink	-2.3 - -2.0
Light Purple	-2.5 - -2.3
Light Blue	-2.7 - -2.5
Blue	-3.0 - -2.7
Dark Blue	-3.5 - -3.0
Very Dark Blue	-5.0 - -3.5
Black	> -5.0

Please note that since the time of recording, the riverbed and the signalling may have changed. The exact location of the fairway is shown by the buoys. Indicated depths are reduced to water level ENR2006.